

# MAINTENANCE ORDINARY UPKEEP - PLUMBING AND FINISHES REPAIR WORK ( NOT AN ACCESSIBILITY UPGRADE ) AT WILLOW CREEK CENTER 1026 MOHR LANE CONCORD CA 94519



1936 Carlotta Dr.,  
Concord, CA 94519



## MT DIABLO UNIFIED SCHOOL DISTRICT - CONTRA COSTA COUNTY



ARCHITECTS, INC.

Architecture • Planning • Interiors

3211 Romino Way  
Lafayette, California 94549  
925.949.8333 tel.

STRUCTURAL ENGINEER  
TSA STRUCTURAL ENGINEERS

433 AIRPORT BLVD., #106E  
BURLINGAME, CA 94010  
TEL. (650) 620-9555

ADMINISTRATIVE REQUIREMENTS	APPLICABLE CODES WITHIN LIMIT OF WORK	ABBREVIATIONS	DRAWING INDEX
-----------------------------	---------------------------------------	---------------	---------------

D.S.A. FILE No. 7-H5  
PART 1, TITLE 24, C.C.R.  
P.T.N. XXX

A. ADDENDA AND CONSTRUCTION CHANGE DOCUMENTS AS PER SECTION 4-338; NO WORK SHALL COMMENCE UNTIL APPROVED BY DSA

B. INSPECTOR APPROVED BY DSA (CLASS-3 MIN.)

C. INSPECTOR AND CONTINUOUS INSPECTION OF WORK PER SECTION 4-333(b) AND 4-342

D. TEST AND TESTING LABORATORY PER SECTION 4-335 (OWNER SHALL PAY THE TESTING LABORATORY)

E. SPECIAL INSPECTION PER SECTION 4-333(c)

F. CONTRACTOR SHALL SUBMIT VERIFIED REPORT (FORM DSA 6) PER SECTION 4-336 & 4-343(C)

G. ADMINISTRATION OF CONSTRUCTION PER PART 1, TITLE 24, C.C.R., DUTIES OF ARCHITECT, STRUCTURAL ENGINEER OR PROFESSIONAL ENGINEER PER SECTION 4-333(e) AND 4-341; DUTIES OF CONTRACTOR PER SECTION 4-343; VERIFIED REPORTS (FORM DSA 6) PER SECTION 4-336

H. A COPY OF PART 1, 2, 3, 4 & 5 OF TITLE 24 SHALL BE KEPT & AVAILABLE IN THE FIELD DURING CONSTRUCTION

K. DSA SHALL BE NOTIFIED ON START OF CONSTRUCTION & PRIOR TO PLACEMENT OF CONCRETE, PER SEC. 4-331

I. SUPERVISION OF CONSTRUCTION BY DSA PER SECTION 4-334

L. DSA IS NOT SUBJECT TO ARBITRATION

M. PER SECTION 4-317(C), PART 1, TITLE 24, C.C.R.: THE INTENT OF THESE DRAWINGS AND SPECIFICATIONS IS THAT THE WORK OF THE ALTERATION, REHABILITATION OR RECONSTRUCTION IS TO BE IN ACCORDANCE WITH TITLE 24, C.C.R. SHOULD ANY EXISTING CONDITIONS SUCH AS DETERIORATION OR NON COMPLYING CONSTRUCTION BE DISCOVERED WHICH IS NOT COVERED BY THE CONSTRUCTION DOCUMENTS WHEREIN THE FINISHED WORK WILL NOT COMPLY WITH TITLE 24, C.C.R. A CONSTRUCTION CHANGE DOCUMENT (CCD) OR A SEPARATE SET OF PLANS AND SPECIFICATIONS, DETAILING AND SPECIFYING THE REQUIRED WORK SHALL BE SUBMITTED TO AND APPROVED BY THE DSA BEFORE PROCEEDING WITH THE WORK.

N. THE INTENT OF THESE DRAWINGS IS TO MODIFY THE FACILITY FOR ACCESSIBILITY IN ACCORDANCE WITH TITLE 24, CALIFORNIA CODE OF REGULATIONS. SHOULD ANY CONDITIONS DEVELOP NOT COVERED BY THE CONTRACT DOCUMENTS SUCH THAT THE FINISHED WORK WILL NOT COMPLY WITH SAID TITLE 24, CALIFORNIA CODE OF REGULATIONS, A CONSTRUCTION CHANGE DOCUMENT (CCD) DETAILING AND SPECIFYING THE REQUIRED WORK SHALL BE SUBMITTED TO AND APPROVED BY THE DSA-AC BEFORE PROCEEDING WITH THE WORK.

O. CHANGES TO THE APPROVED DRAWINGS AND SPECIFICATIONS SHALL BE MADE BY ADDENDA OR CONSTRUCTION CHANGE DOCUMENT (CCD) APPROVED BY DSA AS REQUIRED BY SECTION 4-338, PART 1, TITLE 24, C.C.R.

P. A "DSA" CERTIFIED PROJECT INSPECTOR EMPLOYED BY THE DISTRICT (OWNER) AND APPROVED BY THE DSA SHALL PROVIDE CONTINUOUS INSPECTION OF THE WORK. THE DUTIES OF THE INSPECTOR ARE DEFINED IN SECTION 4-342, PART 1, TITLE-24 C.C.R.

Q. A "DSA" ACCEPTED TESTING LABORATORY DIRECTLY EMPLOYED BY THE DISTRICT (OWNER) SHALL CONDUCT ALL THE REQUIRED TESTS AND INSPECTIONS OF THE PROJECT.

2016 California Administrative Code (CAC), Part 1, Title 24 CCR\*

2016 California Building Code (CBC), Part 2, Title 24 CCR  
(2015 International Building Code, Vol. 1 & 2, and 2016 California amendments)

2016 California Electrical Code (CEC), Part 3, Title 24 CCR  
(2014 National Electrical Code and 2016 California amendments)

2016 California Mechanical Code (CMC), Part 4, Title 24 CCR  
(2015 IAPMO Uniform Mechanical Code and 2016 California amendments)

2016 California Plumbing Code (CPC), Part 5, Title 24 CCR  
(2015 IAPMO Uniform Plumbing Code and 2016 California amendments)

2016 California Energy Code (CEC), Part 6, Title 24 CCR

2016 California Fire Code (CFC), Part 9, Title 24 CCR  
(2015 International Fire Code and 2016 California amendments)

2016 California Existing Building Code (CEBC), Part 10, Title 24 CCR  
(2015 International Existing Building Code and 2016 California Amendments)

2016 California Green Building Standards Code (CALGreen), Part 11, Title 24 CCR

2016 California Referenced Standards Code, Part 12, Title 24 CCR

Title 19 CCR, Public Safety, State Fire Marshal Regulations

2013 ASME A17.1/CSA B44-13 Safety Code for Elevators and Escalators

**NATIONAL STANDARDS**

NFPA 13 Standard for the Installation of Sprinkler Systems (CA amended) 2016 Edition

NFPA 14 Standard for the Installation of Standpipe and Hose Systems 2013 Edition

NFPA 17 Standard for Dry Chemical Extinguishing Systems 2013 Edition

NFPA 17A Standard for Wet Chemical Extinguishing Systems 2013 Edition

NFPA 20 Standard for the Installation of Stationary Pumps for Fire Protection 2016 Edition

NFPA 22 Standard for Water Tanks for Private Fire Protection 2013 Edition

NFPA 24 Standard for the Installation of Private Fire Service Mains and Their Appurtenances 2016 Edition

NFPA 72 National Fire Alarm and Signaling Code (CA amended): 2016 Edition

NFPA 80 Standard for Fire Doors and Other Opening Protectives 2016 Edition

NFPA 2001 Standard on Clean Agent Fire Extinguishing Systems 2015 Edition

UL 300 Standard for Fire Testing of Fire Extinguishing Systems for Protection of Commercial Cooking Equipment 2005 (R2010)

UL 464 Audible Signaling Devices for Fire Alarm and Signaling Systems, Including Accessories 2003 Edition

UL 521 Standard for Heat Detectors for Fire Protective Signaling Systems 1999 Edition

UL 1971 Standard for Signaling Devices for the Hearing Impaired 2002 Edition

ICC 300 Standard for Bleachers, Folding and Telescopic Seating, and Grandstands 2012 Edition

⊙	At	JAN.	Janitor
A.C.T.	Acoustic Ceiling Tile	JST.	Joist
ACS	Accessible	JT.	Joint
ADJ.	Adjacent, Adjustable	LAM.	Laminated
A.F.F.	Above Finish Floor	LEV.	Level
AL.	Aluminum	LOC.	Location
A.T.C.	Acoustic Tile Ceiling	MAX.	Maximum
BD.	Board	M.D.F.	Medium Density Fiberboard
BLKG.	Blocking	MECH.	Mechanical
BM.	Beam	MEZZ.	Mezzanine
B.O.	Bottom Of	MFR.	Manufacturer
BOT.	Bottom	MIN.	Minimum
BRG.	Bearing	MISC.	Miscellaneous
BTWN.	Between	MTD.	Mounted
CAB.	Cabinet	MTL.	Metal
CER.	Ceramic	(N)	New
C.J.	Control Joint	N.I.C.	Not In Contract
C.	Center Line	NO.	Number
CL.	Closet	NOM.	Nominal
CLG.	Ceiling	N.T.S.	Not To Scale
CLR.	Clear	O.C.	On Center
C.M.U.	Concrete Masonry Unit	O.D.	Outside Diameter
COL.	Column	OPNG.	Opening
CONC.	Concrete	OPP.	Opposite
CONST.	Construction	O.H.	Oval Head
CONT.	Continuous	P.H.W.S.	Power Head Wood Screw
COORD.	Coordinate	P. LAM.	Plastic Laminated
C.R.	Cold Rolled	R.	Radius
C.T.	Ceramic Tile	PL.	Plate
CTR.	Counter	PLY.	Plywood
CTSK.	Countersink	PLYWD.	Plywood
DBL.	Double	PT.	Point
DCA.	Drilled Concrete Anchor	PTD.	Pointed
DET.	Detail	PTN.	Partition
D.F.	Drinking Fountain	Q.T.	Quarry Tile
DIA.	Diameter	QTY.	Quantity
DM.	Dimension	R.	Radius
DISP.	Dispenser	R.D.	Roof Drain
DN.	Down	RE.	Refer To
DR.	Door	REQ.	Required/Requirements
DTL.	Detail	RES.	Resilient
DWG.	Drawing	RESIL.	Resilient
(E)	Existing	R.H.	Round Head
EA.	Each	R.H.W.S.	Round Head Wood Screw
E.J.	Expansion Joint	RM.	Room
EL.	Elevation	R.O.	Rough Opening
ELEC.	Electrical	S.C.	Solid Core / Seat Cover
EO	Electrical Outlet	SCHED.	Schedule
EQ.	Equal	SECT.	Section
EQUIP.	Equipment	S.E.D.	See Electrical Drawings
E.W.C.	Electric Water Cooler	SFD	Smoke Fire Damper
EXIST.	Existing	SHT.	Sheet
EXP.	Expansion	SIM.	Similar
EXP. JT.	Expansion Joint	S.M.D.	See Mechanical Drawings
EXT.	Exterior	S.M.S.	Sheet Metal Screw
F.D.	Floor Drain	S.P.D.	See Plumbing Drawings
F.E.	Fire Extinguisher	S.S.	Stainless Steel
F.E.C.	Fire Extinguisher Cabinet	S.S.D.	See Structural Drawings
F.H.	Flat Head	S.T.S.	Self-Drilling, Self-Tapping
F.H.C.	Fire Hose Cabinet	S.M.S.	Sheet Metal Screw
FIN.	Finish	STD.	Standard
FLR.	Floor	STL.	Steel
FLUOR.	Fluorescent	STRUCT.	Structural
FUSE OF	Fuse Of	SUSP.	Suspended
F.O.S.	Face Of Stud	THK.	Thick
F.O.W.	Face Of Wall	T.O.	Top Of
F.S.	Full Size	T.O.C.	Top Of Concrete
FURR.	Furring	T.O.S.	Top Of Steel
GA.	Gauge	TYP.	Typical
GALV.	Galvanized	U.O.N.	Unless Otherwise Noted
G.B.	Grab Bar	UP.	Upper
G.D.	Garbage Disposal	V.C.T.	Vinyl Composition Tile
GYP. BD.	Gypsum Wallboard	VEN.	Veneer
H.B.	Hose Bibb	VER.	Verify
H.C.	Hollow Core	VEST.	Vestibule
HDWD.	Hardwood	V.I.F.	Verify In Field
H.M.	Hollow Metal	W/	With
HR.	Hour	W.C.	Wall Covering
HT.	Height	WD.	Wood
I.D.	Inside Diameter	W.R.	Water Resistant
I.F.	Inside Face	WR	Waste Receptacle
INS.	Insulation	W.S.	Wood Screw
INT.	Interior		
INTER.	Intermediate		

A-000 TITLE SHEET

A-001 SITE PLAN / ACCESS INFO

A-200 DEMOLITION, FLOOR AND RCP

A-300 GENERAL CONSTRUCTION NOTES & SCHEDULES

A-500 DETAILS

SSP STRUCTURAL SPECIFICATIONS

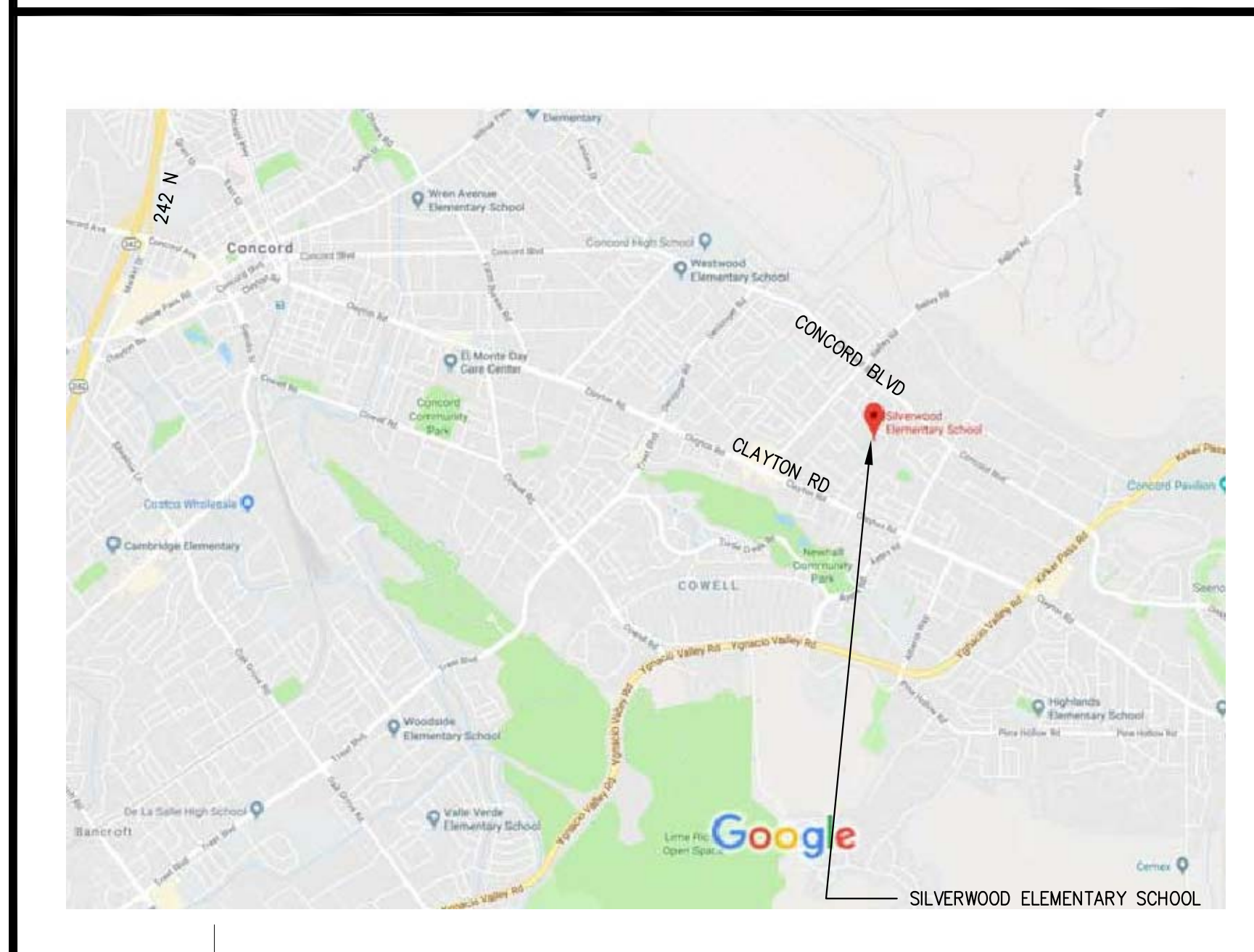
### SCOPE OF WORK

THE SCOPE OF WORK OF THIS PROJECT IS LIMITED TO THE SCHOOL'S RESTROOM ( MEN AND WOMEN ) BUT IS NOT LIMITED TO INSTALLING NEW TOILET FIXTURES AND ACCESSORIES, INSTALLING (N) CERAMIC TILES WITH, (N) SHEET VINYL, PAINTING AND GENERAL MAINTENANCE AND UPKEEP OF THE RESTROOMS. THIS SCOPE IS NOT AN ACCESS COMPLIANCE UPGRADE.

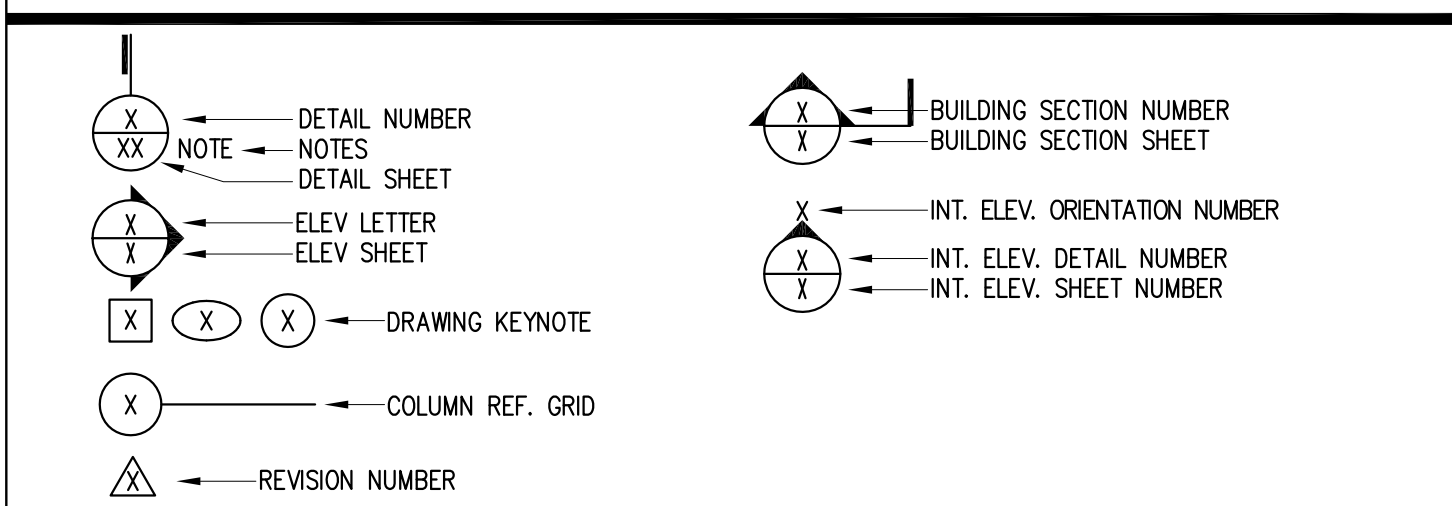
### PROJECT REQUIREMENTS

- ALL DEMOLITION & CONSTRUCTION WORK SHALL COMPLY WITH 2013 CFC CHAPTER 33 "FIRE SAFETY DURING CONSTRUCTION AND DEMOLITION"
- EMERGENCY VEHICLE ACCESS ROADS AND ON-SITE FIRE HYDRANTS SHALL BE IN SERVICE AND OPERABLE PRIOR TO LOADING THE SITE WITH COMBUSTIBLE MATERIAL.
- EXISTING ACCESSIBLE ROUTES TO ALL FACILITIES AND BUILDING THAT ARE OPERATIONAL DURING CONSTRUCTION PHASE SHALL REMAIN UNOBSTRUCTED, SAFE AND USABLE BY PEOPLE WITH DISABILITIES.
- ALL MATERIAL AND WORKMANSHIP SHALL CONFORM TO THE CURRENT EDITION OF THE CALIFORNIA BUILDING CODE, CMC, CPC, CEC AND ALL APPLICABLE LOCAL CODES, ORDINANCES, AND STATE AMENDMENTS.
- THE CONTRACTOR SHALL CHECK ALL DRAWINGS IMMEDIATELY UPON THEIR RECEIPT AND SHALL VERIFY ALL DIMENSIONS AND SITE CONDITIONS BEFORE STARTING WORK. ARCHITECTS AND ENGINEERS SHALL BE NOTIFIED OF ANY DISCREPANCIES.
- WHEN DETAILS LABELED "TYPICAL" OR "SIMILAR" ARE GIVEN ON DRAWINGS, THE CONTRACTOR SHALL APPLY THE INTENT OF THE DETAIL TO ALL SIMILAR CONDITIONS THAT IT APPLIES.
- CONNECTIONS AND IMPLIED CONSTRUCTION ASSEMBLIES THAT ARE NOT SPECIFICALLY DESCRIBED OR DETAILED SHALL BE CONSTRUCTED USING STANDARD CONSTRUCTION PRACTICES IN COMPLIANCE WITH THE GOVERNING CODES AND ORDINANCES.

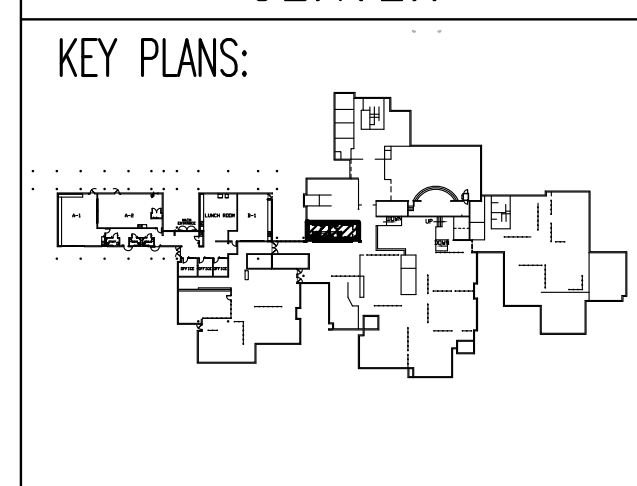
### PROJECT LOCATION



### SYMBOLS



PROJECT TITLE:  
**MAINTENANCE WORK  
PLUMBING AND FINISHES  
AT STUDENTS'  
RESTROOMS  
WILLOW CREEK  
CENTER**



REVISIONS:

date	description	symbol
3/14/2018	NON DSA	

PHD ARCHITECTS JOB #  
**17-215**

SCALE: AS NOTED      DATE: 1/30/18

SHEET NAME & NUMBER:  
**TITLE SHEET**  
**A-000**





1936 Carlotta Dr.,  
Concord, CA 94519



Architecture • Planning • Interiors

3211 Romino Way  
Lafayette, California 94549  
925.949.8333 tel.

STRUCTURAL ENGINEER  
TSA STRUCTURAL ENGINEERS

433 AIRPORT BLVD., #106E  
BURLINGAME, CA 94010  
TEL. (650) 620-9555

### BID & CONSTRUCTION REQUIREMENTS

THE CONTRACTOR IS REQUIRED TO VERIFY IN FIELD ACTUAL EXISTING EXPOSED CONDITION AND EXTENT OF DEMOLITION AND CONSTRUCTION REQUIRED TO PERFORM THE JOB PRIOR TO BID - NOT ALL EXISTING CONDITIONS ARE SHOWN ON THE DRAWINGS.

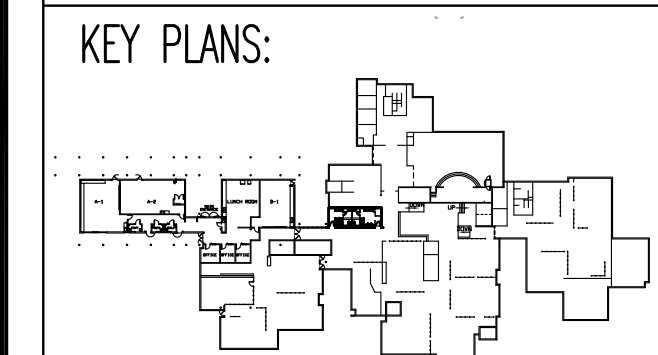
THE ABOVE IS APPLICABLE FOR THE EXTERIOR AND THE INTERIOR OF THE BUILDING WITHIN THE AREA OF THE SCOPE OF WORK.

IT IS UNDERSTOOD THAT THESE APPROVED DRAWINGS ARE SHOWING THE INTENT OF THE SCOPE OF WORK AND ASSUMPTIONS HAVE BEEN MADE. CONTINGENCY FOR REMOVAL/RE-ROUTING, RE-CONSTRUCTING, RE-SIZING EXISTING INTERIOR & EXTERIOR UTILITY LINES SUCH AS (BUT NOT LIMITED TO) GAS, SEWER, WATER, DRAINS, CLEAN-OUTS, WALL & CEILING MOUNTED FIRE ALARM EQUIPMENT, MONITOR DEVICES & SENSORS, LIGHTING FIXTURES & EQUIPMENT, ELECTRICAL BOXES, PLUGS & SWITCHES AND RELATED CABLES & CONDUITS (CONCEALED AND NOT) MUST BE INCLUDED ON THE BASE BID.

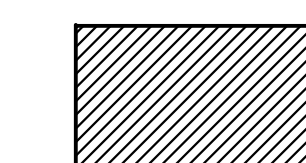
THE DISTRICT HAS MADE AVAILABLE ALL AS-BUILT INFORMATION FOR THE CONTRACTOR TO ASSES SCOPE AS ACCURATE AS POSSIBLE PRIOR TO FINAL BID.

WITH THE ABOVE THE CONTRACTOR IS ADVISED AND AGREES THAT THE DISTRICT WILL NOT NEGOTIATE ADDITIONAL COMPENSATIONS ON ITEMS NOT SHOWN ON THE DRAWINGS BUT, VISIBLE AND/OR EXPOSED AND REASONABLY ASSUMED FROM THE PROJECT SCOPE AND OBVIOUSLY REQUIRED TO BE PERFORMED IN ORDER TO ATTAIN A COMPLETE AND FINISHED PRODUCT

PROJECT TITLE:  
**MAINTENANCE WORK  
PLUMBING AND FINISHES  
AT STUDENTS'  
RESTROOMS  
WILLOW CREEK  
CENTER**



### SHEET LEGEND



SCOPE OF WORK



NO WORK IS PROPOSED IN (E) BUILDING

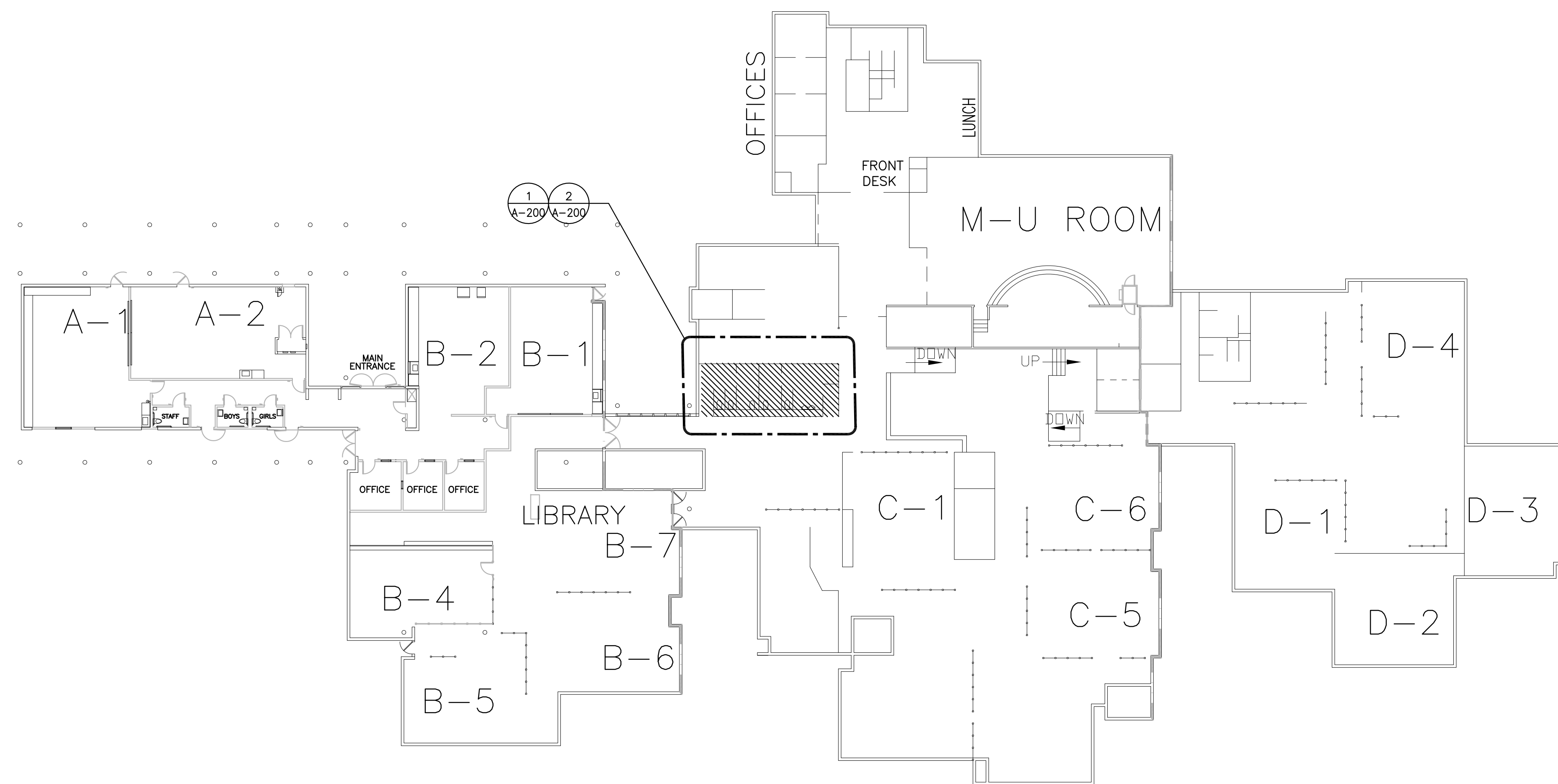


(E) FIRE HYDRANT

(E) PROPERTY LINE

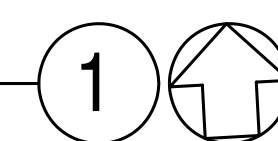


(E) CHAIN LINK FENCE



WILLOW CREEK CENTER - EXISTING SITE PLAN

SCALE: 1"=20'-0"



date	description	symbol
	DISTRICT REVIEW	
3/14/2018	NON DSA	

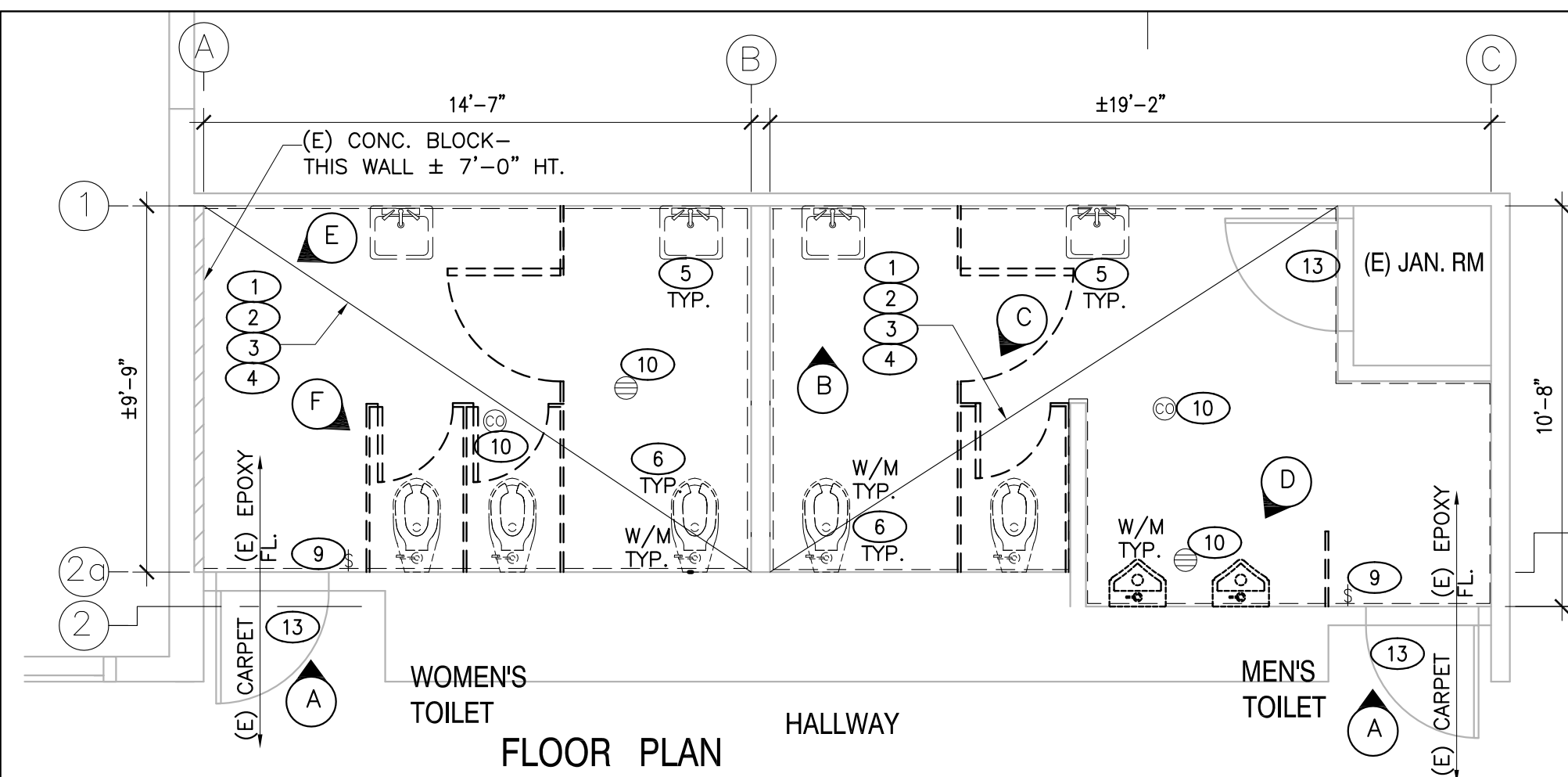
PHD ARCHITECTS JOB #  
17-215

SCALE:  
AS NOTED

DATE:  
1/30/18

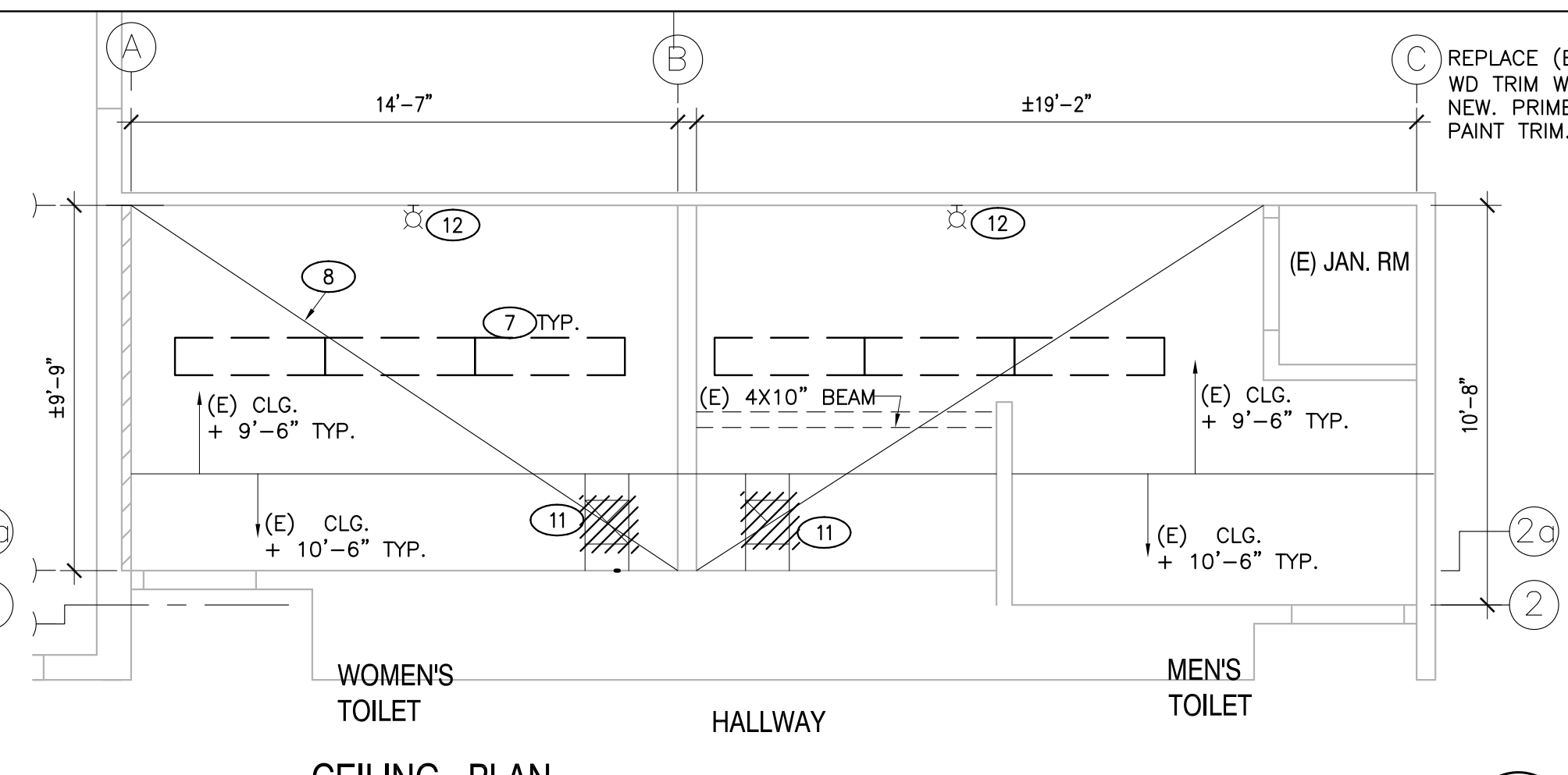
SHEET NAME & NUMBER:  
SITE PLAN /  
ACCESS INFO.  
**A-001**





**FLOOR PLAN  
DEMOLITION PLAN - WOMEN'S AND MEN'S TOILET ROOM**

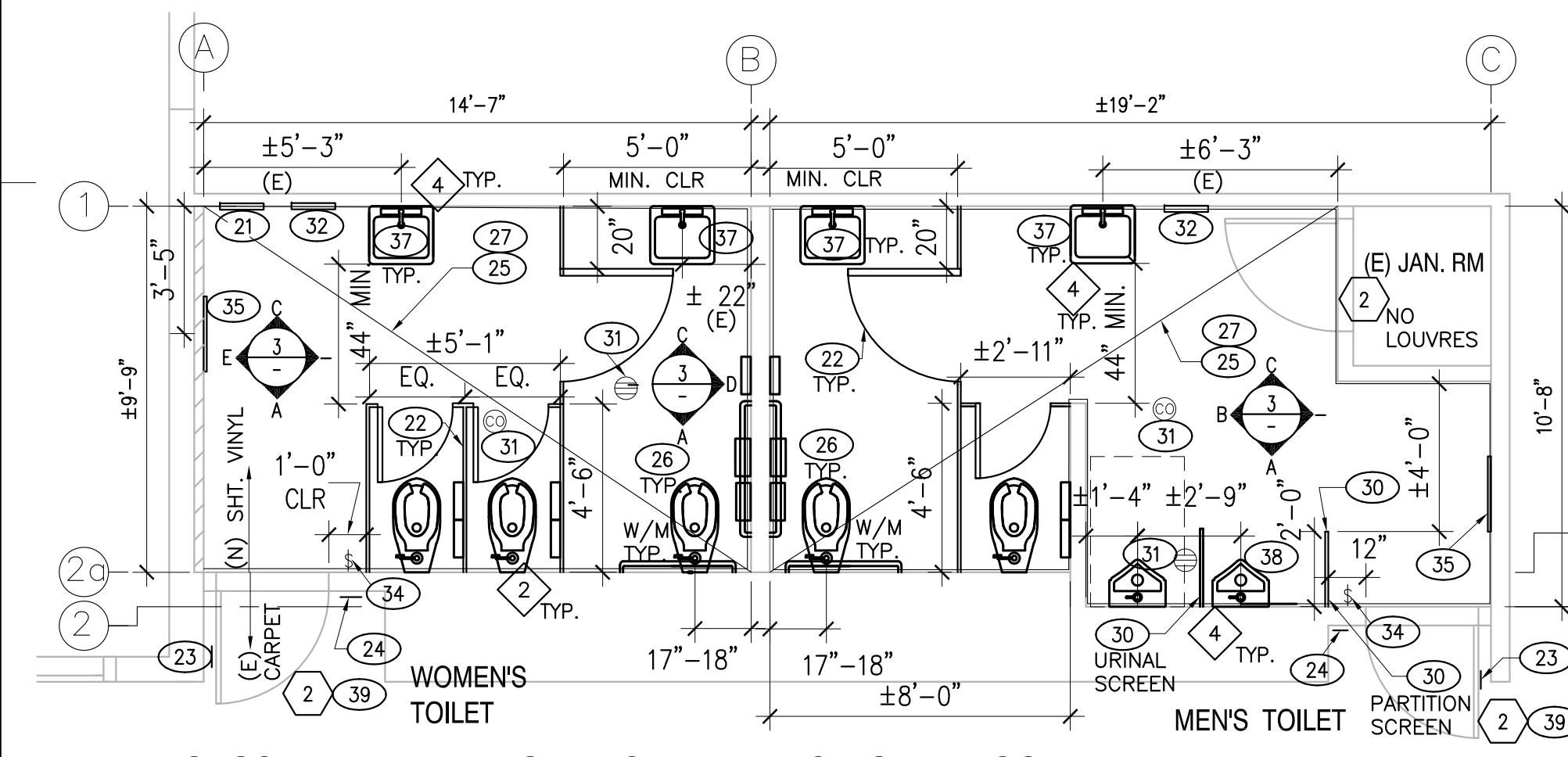
SCALE: 1/4"=1'-0" NOTE DEMO WORK:  
ALL WALLS / CEILING AFFECTED BY DEMO WORK MUST BE PATCHED AND LEVEL TO MATCH EXISTING ASSEMBLY.



**CEILING PLAN**



PHOTO E - WOMEN



**PROPOSED PLAN - WOMEN'S AND MEN'S TOILET ROOM**

SCALE: 1/4"=1'-0"  
GENERAL NOTE:  
1) (N) URINAL FIXTURES / WATER CLOSETS / LAVATORIES TO BE MOUNTED PER (E) LOCATION. SEE PLUMBING SCHEDULE. URINAL (N) HT SHALL BE 17" AT TOP OF RIM. SEE ELEV. LAV. MOUNT AT SAME HT AND LOCATION.  
2) (N) TOILET ACCESSORIES ( MIRROR / DISPENSERS) - SEE PLAN FOR NEW LOCATION. SEE ELEV FOR MOUNTING HT.  
3) (E) CEILING WORK MUST BE PATCHED AND LEVELED TO ACHIEVE LEVEL 5 FINISH. ALL WALLS / CEILINGS / TRIMS / FRAMES / EXPOSED PIPES MUST BE PAINTED.  
4) (N) SHEET VINYL TO BE INSTALLED ON CONCRETE FLOORS. EXISTING EPOXY FLOORS MUST BE FREE OF ALL LOOSE RESIDUAL, AND ANY LOOSE OR DAMAGED AREAS MUST BE REMOVED AND COMPLETELY PATCHED WITH ARMSTRONG S-184 OR ARMSTRONG S-194 AS NECESSARY. REMOVE ANY NUBBY TEXTURE WITH WET, SHARP SAND AND A FLOOR MACHINE EQUIPPED WITH CARBORUNDUM STONES. DO NOT USE A SKIM COAT OF LATEX UNDERLAYMENT TO SMOOTH THE SURFACE AS IT WILL NOT ADHERE RELIABLY TO THE CONCRETE.  
5) REPLACE ALL (E) ACCESS PANEL WITH (N). MATCH (E) SIZE. ASSUME 4 TOTAL AT EA. RESTRM.

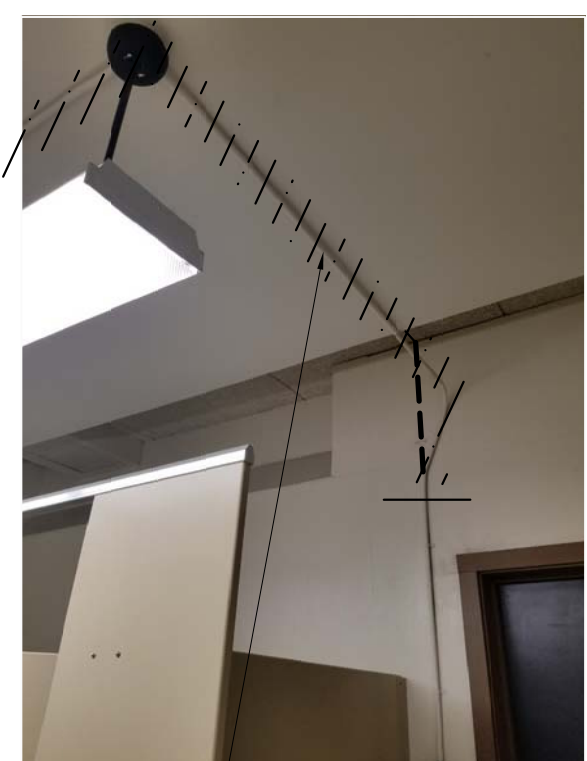
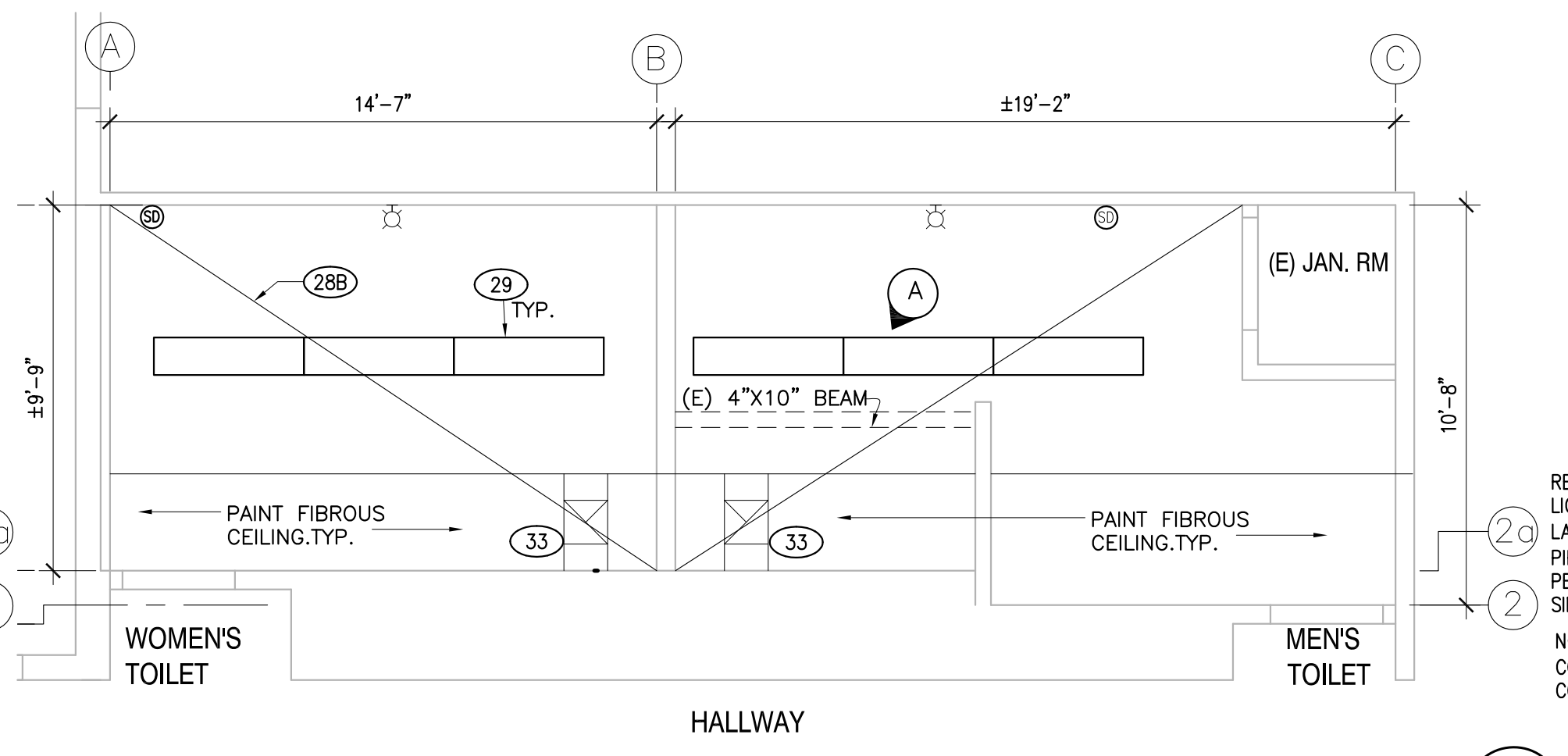


PHOTO F - WOMEN

RELOCATE AND CONCEAL (E) EXPOSED ELECTRICAL LIGHTING CONDUIT THROUGH CEILING. INCLUDE ALL LABOR AND MATERIAL TO RE-RUN (N) PIPING/CONDUIT THRU THE CLG. FILL ALL PENETRATIONS TIGHT & PER DETAIL. SIM. AT MEN'S RESTROOM.  
NOTE: CONTRACTOR SHALL VISIT, EXAMINE AND COORDINATE ALL RE-ROUTING OF (E) PIPES AND CONDUITS. REFER GENERAL NOTES #29 SHEET A300

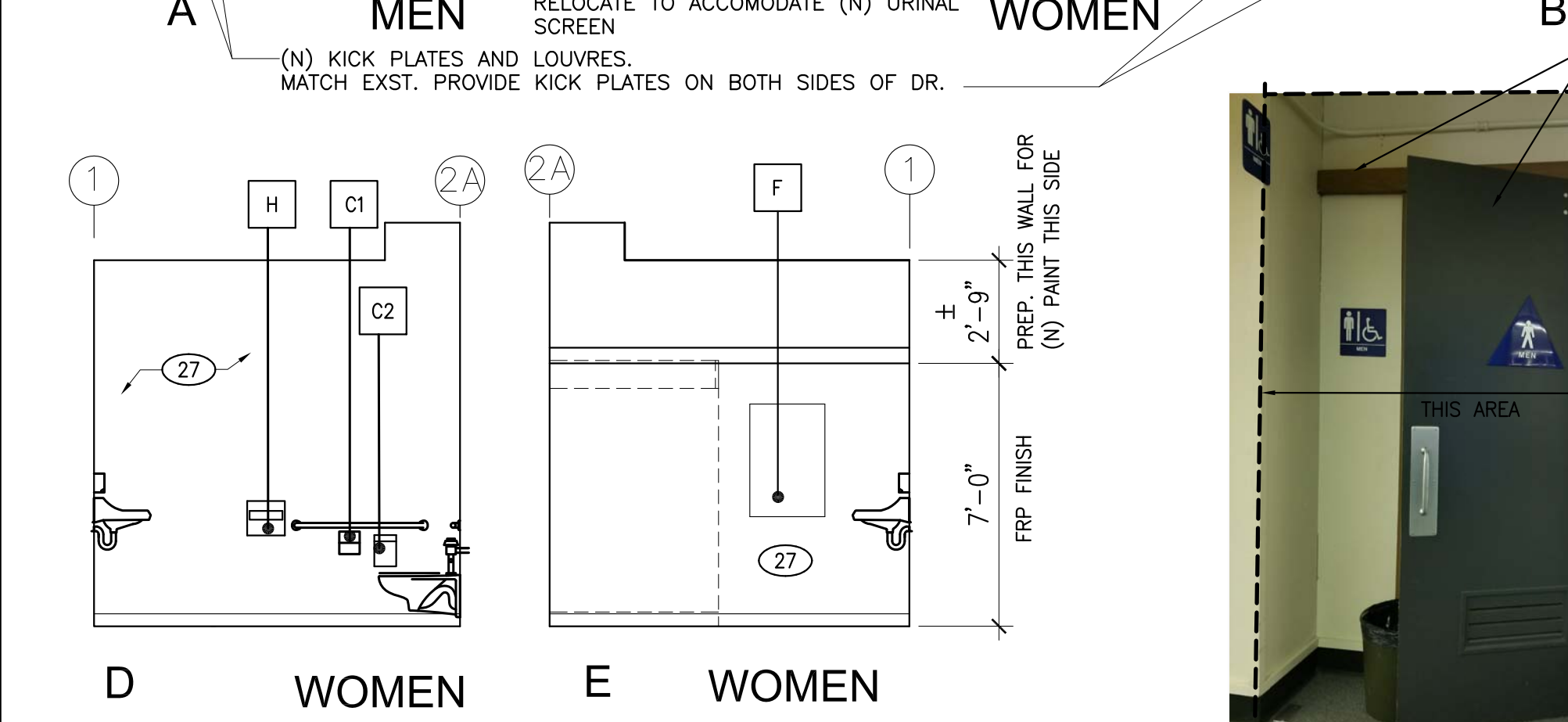
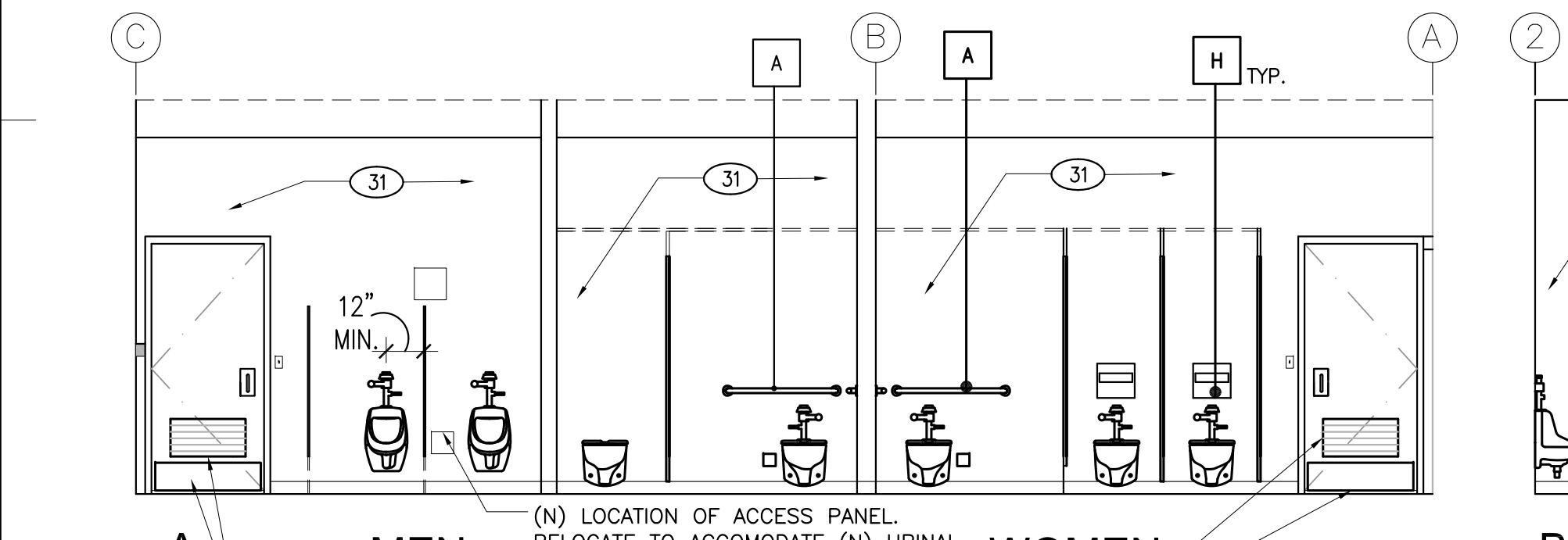


PHOTO A - TYP. AT WOMEN

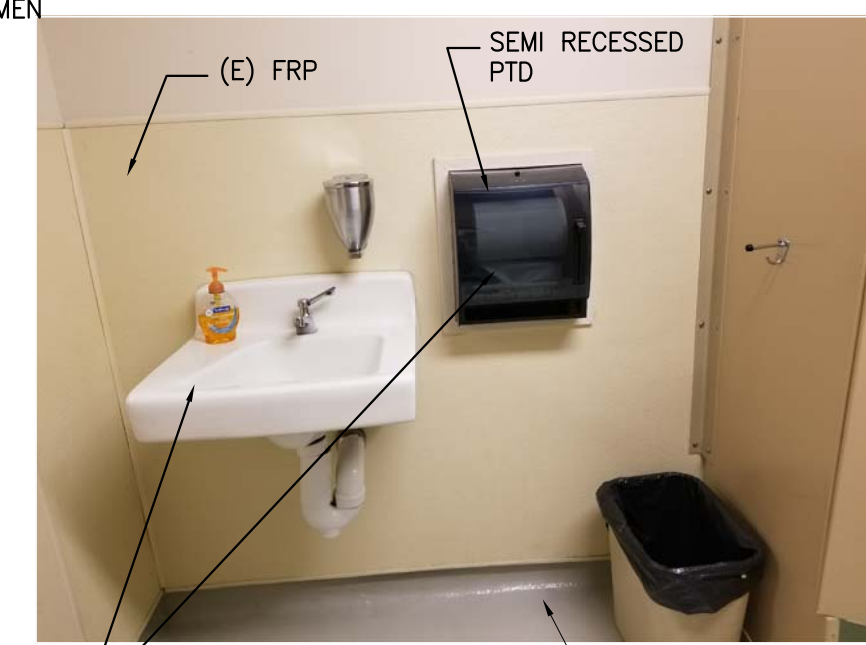


PHOTO B - MEN



PHOTO C - MEN



PHOTO D - MEN

**DEMOLITION KEYNOTES**

- REMOVE (E) WALL FINISHES AND PREPARE FOR (N) FRP. FLOOR TO CEILING
- (E) EPOXY FLOOR. SEE GENERAL NOTE # 4 TO PREPARE FOR SHEET VINYL.
- REMOVE ALL EXISTING TOILET ACCESSORIES & ASSEMBLY (AS APPLICABLE BUT NOT LIMITED TO): SOAP DISPENSER, PAPER DISPENSER, MIRROR, WASTE RECEPTACLE ETC.) - SALVAGE ACCESSORIES IN GOOD WORKING ORDER AND DELIVER TO DISTRICT MAINTENANCE OFFICE
- REMOVE EXISTING TOILET PARTITIONS SYSTEM AND ASSEMBLY INCL. ANCHORS, ETC.
- REMOVE EXISTING LAVATORY & ASSEMBLY.
- REMOVE EXISTING TOILET/URINAL FIXTURE & ASSEMBLY.
- REMOVE THE EXISTING LIGHT FIXTURES & ASSEMBLY. REPLACE WITH (N).
- (E) GEMENT PLASTER / GYP. BD. CEILING TO REMAIN.
- REPLACE THE EXISTING LIGHT SWITCH CONTROL PLATE WITH NEW KEYLESS LIGHT SWITCH
- REMOVE THE EXISTING FLOOR DRAIN STRAINER (TOP COVER) / CLEAN OUT (TOP COVER) & PREPARE FOR NEW (V.I.F.) - MIN. 2 FLOOR DRAIN PER ROOM UNLESS OTHERWISE NOTED
- DEMO (E) CEILING MOUNTED EXHAUST FAN & ALL RELATED ASSEMBLY FOR REPLACEMENT. ENLARGE OPENING AS REQUIRED.
- (E) FIRE STROBE TO REMAIN
- (E) DOOR AND FRAME TO REMAIN

**CONSTRUCTION KEYNOTES**

- NOTES:  
1. ALL ITEMS INDICATED ON THE KEY NOTES ARE NEW UNLESS OTHERWISE NOTED  
2. CONTRACTOR MUST INCLUDE ALL NOTES LISTED ON SHEET A300 AS PART OF THE SCOPE OF WORK.

- SEMI RECESSED SANITARY NAPKIN/TAMPON VENDOR NO COIN - FREE
- (N) TOILET PARTITIONS / DOORS AND ASSEMBLY. PROVIDE CONT. LEVELED, FINISHED BACKING FOR CONTINUOUS PARTITION VERTICAL ANCHORAGE. SEE (1) (2) (5) (A.500) (A.500) (A.500)
- EXISTING DOOR SIGN, PER (3) (A.500) RE-USE AND REINSTALL
- EXISTING ROOM ID. SIGN, PER (11) (A.500) RE-USE AND REINSTALL
- SHEET VINYL FLOOR W/ 4" INTERGRATED COVE BASE. INSTALL PER MANUFACTURE INSTALLATION
- TOILET FIXTURE & FLUSHOMETER. MOUNT SAME LOCATION - SEE A300 FIXTURE SCHEDULE
- FRP FINISHES- FLOOR TO CEILING
- (N) CERAMIC WALL TILES WITH GOVED BASE, SEE FINISH SCHEDULES (10) (A.500) AND (28A) (A.500) FOR PATCHING. (10) (A.500) NOT USED
- (E) CEILING. PAINT TO MATCH (E). WHERE REQD. PATCH CEILING OR MATCH (E) THICKNESS ASSEMBLY TO ACHIEVE LEVEL PLANE. LEVEL 5 FINISH. SEE (10) (A.500)
- CEILING MOUNTED (NOT-SUSPENDED) LIGHT FIXTURE (14Lb). INSTALL PER MANUFACT. RECOMMENDATIONS. CONNECT TO THE (E) WIRING. WHERE REQD. PATCH CEILING OR MATCH (E) ASSEMBLY THICKNESS TO ACHIEVE LEVEL AND LEVEL 5 FINISH. SEE DETAIL (10) (A.500) FOR PATCHING. MAINTAIN 12" FR. (E) SMOKE DETECTOR. SEE CUT SHEETS
- WHERE NOTED URINAL SCREEN (24" WIDE) @ URINAL). BRACE TO WALL & FLOOR WHERE NOTED PARTITION SCREEN (HEIGHT OF TOILET PARTITION) BRACE FLR TO CLG.
- PROVIDE DRAIN STRAINER (TOP COVER) / CLEAN OUT (TOP COVER), FLUSH W/ FINISH FLOOR. MIN. 2 PER ROOM UON
- ELECTRIC HAND DRYER, SEE TOILET-FIXTURES SCHEDULE.
- EXHAUST FAN GRILLE AND ASSEMBLY PER CONST. NOTE # 1 A-300. EXHAUST FAN SWITCH TO INTERLOCK WITH KEYLESS LIGHT SWITCH (ON-ON). PATCH AND RE-CONSTRUCT THE ROOF AS REQD. ( CLASS A MIN.) SEE SSP DWG. AND (16) (A.500)
- KEYLESS LIGHT SWITCH. INTEGRATED WITH EXHAUST FAN ON-ON.
- MIRROR. SEE (6) (A.500)
- REPAIR/REFURBISH (E) WD DR/ FR. AND LOUVER LIKE NEW. SEE DOOR SCH. A300
- LAVATORY - MOUNT AT EXST. LOCATION AND RIM HEIGHT. SEE PLUMBING SCHEDULE
- URINAL - MOUNT AT EXST. LOCATION. MOUNT TOP OF URINAL RIM AT 17" HT.
- REPLACE EXISTING PUSH AND PULL PLATE WITH (N). MATCH EXISTING

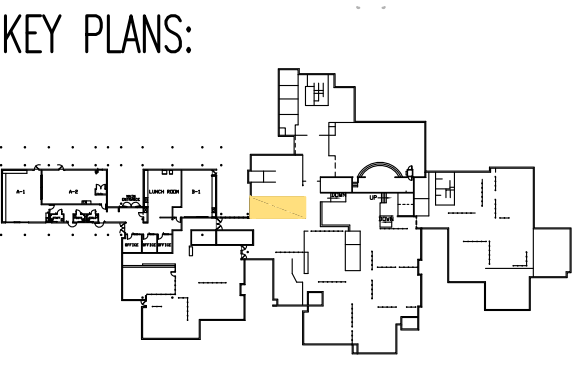
**LEGEND**

- SEE SHT A-300 FOR PLUMBING SCHEDULE
- SEE SHT A-300 FOR DOOR SCHEDULE
- SEE SHT A-300 FOR TOILET ACCESSORIES SCHEDULE
- W/M WALL MOUNTED
- F/M FLOOR MOUNTED
- SD SOAP DISP.
- TP TOILET PAPER DISP.
- SN SANITARY NAPKIN DISP.
- (E) W/M FIRE ALARM STROBE
- 1X4 LIGHT FIXTURE
- 1X1 LIGHT FIXTURE
- (E) CLEAN OUT
- (E) FLOOR DRAIN
- (E) SMOKE DETECTOR
- PHOTO REF. OF EXISTING



STRUCTURAL ENGINEER  
TSA STRUCTURAL ENGINEERS  
433 AIRPORT BLVD., #106E  
BURLINGAME, CA 94010  
TEL. (650) 620-9555

PROJECT TITLE:  
**MAINTENANCE WORK  
PLUMBING AND FINISHES  
AT STUDENTS'  
RESTROOMS  
WILLOW CREEK  
CENTER**



REVISIONS:

date	description	symbol
3/14/2018	NON DSA	

PHD ARCHITECTS JOB #  
17-215

SCALE:  
AS NOTED

DATE:  
1/30/18

SHEET NAME & NUMBER:  
DEMOLITION, FLOOR AND  
RCP  
A-200



# GENERAL NOTES

- THE DISTRICT ASSUMES THAT ALL THE NOTES & SCOPE LISTED ON THIS SHEET HAVE BEEN UNDERSTOOD, AGREED, INCORPORATED INTO THE BID PROPOSAL AND ALL WORK LISTED HAS BEEN INCLUDED. IF THE CONTRACTOR DOES NOT AGREE WITH ANY OF THESE NOTES HE MUST NOTIFY THE DISTRICT IN WRITING, PRIOR TO BID. NOTE: ALL LISTED SCOPE OF WORK IS INTENDED AS "COMPLETE" THEREFORE THE CONTRACTOR MUST INCLUDE IN THIS BID ALL LABOR & MATERIAL (& ASSEMBLY) NECESSARY TO ATTAIN THE FULL INTENT OF THE LISTED SCOPE (FROM THE DEMOLITION THROUGH THE FINISHED (READY TO USE) CONSTRUCTION).
- THIS SET OF DRAWINGS SHOWS ARCHITECTURAL, MECHANICAL, PLUMBING, ELECTRICAL & FIRE ALARM SCOPE & SCOPE-NOTES. THE GENERAL CONTRACTOR IS ADVISED THAT THE DRAWINGS ARE NOT DIVIDED BY TRADES.
- ALL SALVAGED ITEMS ARE TO BE DELIVERED TO THE DISTRICT MAINTENANCE & OPERATIONS'S YARD OFFICE.
- ALL EXISTING FIRE ALARM DEVICES (& RELATED ASSEMBLY) SUCH AS (BUT NOT LIMITED TO) SMOKE & HEAT DETECTORS THAT ARE TO REMAIN MAY REQUIRE TO BE TEMPORARILY DISCONNECTED & REINSTALLED AS PART OF THE SCOPE. THE CONTRACTOR MUST INCLUDE ALLOWANCE (FOR EVERY ROOM) TO EXTEND 10' THE FIRE ALARM WIRING AND UNIT.
- THE CONTRACTOR IS RESPONSIBLE AS PART OF THE COMPLETE SCOPE, TO REINSTALL/RELOCATE, AS REQUIRED, ALL THE PREVIOUSLY DISCONNECTED AND/OR REMOVED ITEMS CEILING/WALL/FLOOR MOUNTED ITEMS (SUCH AS, BUT NOT LIMITED TO, ELECTRICAL CONDUITS & CABLES & WIRES, FIRE ALARM/SECURITY/LIGHTING MOTION SENSORS AND BOXES, LIGHTING FIXTURES, PIPING ETC.) AS PER THE ORIGINAL CONDITION (PROVIDED THAT ORIGINAL CONDITION WAS CONFORMING WITH STATE CODES AND STANDARDS). INCLUDE TEST FOR PROPER OPERATION (IN CASE OF FIRE ALARM EQUIPMENT) WHICH MUST BE PERFORMED BY A ETS3 CERTIFIED TECHNICIAN W/ A CALIFORNIA STATE FIRE ALARM TECHNICIAN CARD.
- ASSUMPTIONS HAVE BEEN MADE CONCERNING EXPOSED AND CONCEALED CONDITIONS. WORK WHICH IS NOT SHOWN ON THE DRAWINGS, BUT COULD BE REASONABLY ASSUMED FROM THE PROJECT SCOPE AND THE REQUIRED EXAMINATION OF THE EXISTING SITE CONDITIONS, AND IS OBVIOUSLY REQUIRED TO BE PERFORMED IN ORDER TO ATTAIN A COMPLETE AND FINISHED PRODUCT, SHALL BE PERFORMED BY THE CONTRACTOR WITHOUT ADDED COST TO THE OWNER. FOLLOW THE BID REQUIREMENTS NOTED ON SHEET A-01.
- THE CONTRACTOR IS RESPONSIBLE TO CLEAN AND KEEP CLEAN ALL AREAS OF THE WORK EVERY DAY. NO TRASH PILES SHALL ACCUMULATE AT ANY TIME.
- THE SCOPE OF WORK (& INTENT OF THE DRAWINGS) IS TO INCLUDE ALL LABOR, MATERIAL & PARTS (INCLUDING FIXTURES & EQUIPMENT, PARTS, CONNECTIONS & LABOR) AS PART OF THE SCOPE TO ATTAIN A COMPLETE & FINISHED JOB.
- THE LOCATION OF THE EXISTING UTILITIES WAS ESTABLISHED FROM BEST AVAILABLE INFORMATION. ASSUME THAT THIS INFORMATION IS APPROXIMATE. IT IS THE CONTRACTOR RESPONSIBILITY TO VERIFY & EXAMINE THE AVAILABLE AS-BUILT DISTRICT RECORDS AS WELL AS THE SITE FOR THE EXACT LOCATION & CONDITIONS BEFORE BID, AS REQUIRED BY THE BID DOCUMENTS.
- COORDINATE ALL WORK LISTED ON THESE DRAWINGS WITH ALL TRADES AND CONTRACTORS.
- THE CONTRACTOR IS RESPONSIBLE FOR ALL TRENCING, BACKFILLING, RE-PAVING, AND RESTORATION OF THE EXISTING SURFACES AS A RESULT OF THE NEW WORK.
- BID & CONSTRUCTION REQUIREMENTS NOTES: SEE SHEET A-001 SITE PLAN / ACCESS INFO.
- THE CONTRACTOR IS TO TAKE ALL NECESSARY PRECAUTIONS TO PROTECT EXISTING EXTERIOR CONCRETE & SOFTSCAPES PAVING. ANY DAMAGE TO THE (E) PAVING DUE TO EQUIPMENT, TRUCKS OR STORED MATERIALS SHALL BE THE RESPONSIBILITY OF THE CONTRACTOR. THE CONTRACTOR IS ADVISED THAT PLAYGROUND PAVING GENERALLY IS NOT OF SUFFICIENT THICKNESS TO WITHSTAND REPEATED OR CONCENTRATED LOADING FROM HEAVY TRUCKS OR EQUIPMENT.
- ALL DIMENSIONS NOTED ON THE FLOOR PLANS MUST BE VERIFIED IN FIELD PRIOR TO CONSTRUCTION. DO NOT SCALE DIMENSIONS FROM ANY DRAWINGS. NO TOLERANCES ARE ALLOWED. NOTIFY ARCHITECT OF ANY DISCREPANCY, PRIOR TO START THE WORK.
- PROTECT AREAS ADJACENT TO THE WORK-AREA. PATCH & REPAIR (TO ORIGINAL CONDITION) ALL DAMAGED AREAS AS A RESULT OF THE WORK, INCLUDING WALLS/ROOFS IN THE ADJACENT ROOMS.
- EVERY TOILET-ROOM WORK INCLUDES EXTENSIVE DEMOLITION & RECONSTRUCTION IN THE ADJACENT MECHANICAL/ELECTRICAL ROOMS DUE TO THE SHARED WALL WHICH HOSTS TOILETS CARRIAGES (& ASSEMBLES), URINALS & ASSEMBLES, WATER, SEWER & VENTING PIPING. THE CONTRACTOR MUST INCLUDE IN THE BASE BID ALL DEMOLITION, SHORING, CONSTRUCTION & PATCHING WORK ASSOCIATED WITH THIS ROOM.
- THE WORK SHOWN ON THE DRAWINGS SHOWS THE INTENT OF THE SCOPE AND MAY NOT REFLECT THE ACTUAL AMOUNT/LOCATION OF DEMOLITION & RE-CONSTRUCTION REQUIRED. ACTUAL CONDITIONS MAY REQUIRE ADDITIONAL CEILING, WALL & FLOOR ASSEMBLY DEMOLITION/CONSTRUCTION AND/OR CONCEALED/EXPOSED PLUMBING, SEWER, ELEC. (E.T.C.) TO BE DEMOLISHED AND/OR TEMPORARILY REMOVED (AND RECONSTRUCTED) TO PERFORM THE WORK PER DISTRICT BIDDING DOCUMENTS FIELD & AVAILABLE AS-BUILT DRAWINGS SHOULD BE EXAMINED PRIOR TO BID BY THE CONTRACTOR.
- SCOPE CONDITIONS MAY REQUIRE THE CONTRACTOR TO DISCONNECT & RELOCATE (WITHIN 20' MAX.) EXISTING CEILING/WALL MOUNTED ITEMS (SUCH AS, BUT NOT LIMITED TO, ELECTRICAL CONDUITS/CABLES/WIRES, FIRE ALARM/SECURITY/LIGHTING MOTION SENSORS & BOXES, LIGHTING FIXTURES, ETC.) IN THE RESTROOMS OR IN THE MECHANICAL ROOMS. (THIS WORK MAY REQUIRE THE TEMPORARY DISCONNECT). INCLUDE COST ALLOWANCE IN YOUR BID.
- ASSUME THAT ALL EXISTING WALLS (WITHIN THE SCOPE OF WORK) HAVE INTERIOR DIAGONAL SHEETING (WOOD SLATS). IF DEMO. WILL REQUIRE CUTTING THE DIAGONAL SHEETING FOR MORE THAN 4'x6" TO RELOCATE A TOILET FIXTURE. REQUEST DIRECTIONS TO PROCEED TO THE MUDSO CONSTRUCTION MANAGER, OTHERWISE PATCH/REPAIR 4'x6" OPENING WITH BLOCKING & STRUCTURAL PLYWOOD (MATCH THICKNESS).
- INCLUDE IN THE BASE BID COMPLETE LABOR & MATERIALS TO RUN ALL EXISTING CONDUITS & WIRING INSIDE THE WALLS & CEILINGS. INCLUDE: CUTTING THROUGH THE PLASTER AND/OR PLYWOOD AND/OR GYP. BD.; NOTCHING STUDS AND/OR JOISTS; ANCHORING THE CONDUITS; PATCHING & PAINTING; NEW CONDUITS & WIRES (4-30 LF MIN.); REPLACING & INSTALLING NEW J-BOXES & ASSEMBLES AS REQUIRED.

# DEMOLITION NOTES

- ASBESTOS NOTE: REQUEST ASBESTOS INFORMATION REGARDING THIS PROJECT TO THE MUDSO PRIOR TO BID.
- SALVAGE ALL EXISTING LAVATOIRES & ACCESSORIES (SOAP DISPENSERS, GRAB BARS, ETC.) & ALL FAUCETS AND FLUSHMETERS FOR DISTRICT REUSE, UNLESS OTHERWISE DIRECTED BY THE MUDSO CM.
- INCLUDE IN THE BASE BID ALL DEMOLITION REQUIRED TO INSTALL NEW WALL BACKING AND FIXTURE CARRIER, AS DESCRIBED IN THE CONSTRUCTION NOTES FOR ALL FIXTURES, EQUIPMENT AND PARTITIONS.
- INCLUDE IN THE BASE BID 20% (MEASURED WITHIN THE PERIMETER OF THE ROOM) OF STUD/SILL DEMO. DUE TO DRY-ROT (INCLUDE ALL DEMO REQUIRED INCLUDING CUTTING OF THE ROTTED STUD/SILL & DRY-WALL).
- REMOVE, FOR REPLACEMENT (LIKE FOR LIKE) ALL EXISTING LIGHT-SWITCHES & PLUGS.
- FLOOR ASSEMBLY DEMOLITION: THE EXISTING CONCRETE FLOOR ASSEMBLY (INCLUDING THE GROUT BED) VARIES. EXISTING GROUT CAN BE BETWEEN 4" TO 6" THICK AND SLAB BETWEEN 8" TO 16" THICK. THE CONTRACTOR MUST CONSULT THE AVAILABLE AS-BUILT DRAWINGS TO GET ACTUAL CONDITION, NO CHANGE ORDER WILL BE AWARDED IF EXISTING CONDITIONS ARE SHOWN ON THE AVAILABLE MUDSO AS-BUILT DRAWINGS.

# CONSTRUCTION NOTES

- INCLUDE IN THE BASE BID THE COMPLETE WORK (DEMOLITION, CONSTRUCTION, INSTALLATION, ETC.) OF THE (ATTIC MOUNTED) EXHAUST FAN UNIT AND COMPLETE WIRING. SEE CONSTRUCTION NOTE #27.
- INCLUDE IN THE BASE BID THE REPLACEMENT (WITH NEW) OF ALL EXTERIOR DOOR THRESHOLDS.
- ALL DOORS AND FRAMES ARE TO BE REPLACED WITH NEW FRP DOORS & METAL FRAMES. VERIFIED IN FIELD EXACT DOOR, OPENING & SIZE AND PRIOR TO ORDERING FINAL PRODUCT. LISTED DOOR & FRAME DIMENSIONS ARE ROUNDED TO NEAREST WHOLE NUMBER.
- WALLS & CEILINGS: THE DISTRICT EXPECTS STRAIGHT LEVELED (& PLUMB) WALLS & CEILINGS WITHIN THE AREA OF WORK. THE CONTRACTOR MUST INCLUDE IN THE BASE BID THE WORK NECESSARY TO OBTAIN STRAIGHT VERTICAL/HORIZONTAL SURFACES (WALLS & CEILINGS), INCLUDING AT CORNERS. THE CONTRACTOR IS WARNED THAT UN-LEVELED/UN-STRAIGHT/UN-PLUMB SURFACES WILL BE REJECTED AND REQUESTED TO BE REDONE BY THE DISTRICT.
- CERAMIC TILE NOTE: THE DISTRICT REQUIRES STRAIGHT & PLUMB TILE-SETS WITH EQUAL GROUT LINES, PARTICULARLY ON THE CORNERS. UNSATISFACTORY RESULTS WILL BE REJECTED BY THE DISTRICT.
- TOILET COMPARTMENT PARTITIONS: ALL TOILET COMPARTMENT PARTITIONS (INCLUDING THE PRIVACY SCREENS) MUST BE BRACED WITH AN HORIZONTAL BRACE-SYSTEM THAT CONNECTS TO THE ADJACENT PARTITIONS TO SECURE/OBTAIN STURDINESS (TO PREVENT "WINGING"). IF A PARTITION WILL BE PLACED IN FRONT OF A WINDOW IT MUST BE PLACED TO THE WALL BELOW THE WINDOW AND, ON THE TOP OF THE PARTITION, WITH AN HORIZONTAL BRACE SYSTEM THAT CONNECTS TO THE ADJACENT PARTITION (THE DOOR PARTITION) ON ONE SIDE AND TO THE OTHER SIDE TO THE WALL (ADJACENT TO THE WINDOW). INCLUDE ALL PROPER WALL BACKING & A FINISHED LOOK. ALL CUT-SECTIONS OF THE BRACING SYSTEM MUST BE CAPPED & FINISHED. NO SHARP EDGES OR EDGES. ALL PARTITIONS BRACING MUST HAVE PROPER (FINISHED) BACKING TO CONTINUE STRAIGHT FROM A TILING SURFACE TO A WALL SURFACE. NOTE: THE PARTITION MANUFACTURER REPRESENTATIVE WILL INSPECT FINAL PARTITION INSTALLATION FOR DISTRICT ACCEPTANCE. NOT-PERFECT JOBS WILL BE REJECTED.
- INCLUDE IN THE BASE BID ALL NEW DOOR CLOSER, CONTINUOUS HINGES, DOOR LOUVERS (& DOOR OPENINGS) & THRESHOLD TO ALL DOORS. LEVER HANDLES & LOCK (RESTROOMS FUNCTION) AS NOTED ON PLANS. SEE SPECIFICATIONS.
- INCLUDE IN THE BASE BID (COST ITEM) A NEW CONCRETE DOOR LANDING INCLUSIVE OF DEMOLITION & NEW CONSTRUCTION (& REBAR) PER 

7	9
A.500	A.500

 AT EACH EXTERIOR DOOR.
- INCLUDE IN THE BASE BID THE PATCHING/REBUILDING OF THE INTERIOR CONCRETE FLOOR. EXISTING CONCRETE FLOOR THICKNESS VARY, INCLUDING ALLOWANCE FOR THICKENED EDGES. FOR THE EXISTING CONCRETE FLOOR CONDITIONS REFER TO THE REFERENCE ASSUMED AS-BUILT CONDITIONS DRAWINGS ATTACHED TO THE BID DOCUMENTS AND TO THE AVAILABLE MUDSO AS-BUILT DRAWINGS AS REQUIRED BY THE BID DOCUMENTS.
- INCLUDE IN THE BASE BID THE REPLACEMENT OF ALL EXISTING FLUORESCENT CEILING MOUNTED LIGHT FIXTURES WITH NEW 4' LED-LIGHTING FIXTURES. INCLUDE ALL DEMO, ELECTRICAL, INSTALLATION, BACKING, FIXTURES, BRACKETS & PARTS.
- INCLUDE IN THE BASE BID, ALL REQUIRED BRACKETS (& 4X6 BLOCKING MIN. WHEN NOT SPECIFIED) TO HANG (CEILING & WALL) ALL (AS PART OF THE SCOPE) ELECTRICAL, MECHANICAL & PLUMBING FIXTURES (INCLUDING CONDUITS, CABLES, ETC.), EQUIPMENT & ALL FIRE ALARM SYSTEMS EQUIPMENT, WIRING, SENSORS, ETC.
- INCLUDE IN THE BASE BID ALL REQUIRED BLOCKING FOR TOILET-PARTITIONS, EQUIPMENT & FIXTURES. SINKS WILL BE MOUNTED ON CONCEALED LAVATORY ARM-BRACKETS WITH 1-20 CARRIAGE BOLTS (ON 6X6 BLOCKING) OR STRONG-DRIVE-SCREWS (ON STUDS) AS NECESSARY. SEE CARRIER CUT SHEET, FOLLOW MANUFACTURER RECOMMENDATIONS.
- ALL NEW GYPSUM BOARD TO BE: "GOLD BOND XP GYP. BD. WITH SPORGARD".
- ALWAYS PROVIDE GALVANIZED, PAINTED, ESCUTCHEON OR SIMILAR TO SEAL PIPING GAPS THROUGH THE CEILING, WALLS OR FLOOR - NO OPENING & ROUGH GAPS - COLORS TO MATCH ADJACENT WALL/CEIL.
- INCLUDE IN THE BASE BID ALL NEW SIGNAGE (DOOR & WALLS) WITH TAMPER-PROOF SCREWS. INCLUDE THE PATCHING AND PAINTING AROUND THE OLD SIGNAGE AS REQUIRED.
- INCLUDE IN THE BASE BID ALL NEW LIGHT-SWITCHES & PLUGS REPLACEMENT. AS APPLICABLE USE THE FOLLOWING: Brand: Hubbell - 122 Series HBL 122 1L - Single Pole 20A 120-277 VAC
- THE SCOPE OF WORK REQUIRES LEVEL 5 FINISH AT ALL (NEW & EXIST.) UN-TILED WALL/CEILING SURFACES. INCLUDE LEVELING, PRIMING & PAINTING. INCLUDE ALL NEW (& EXISTING) CONDUITS, PIPES, CABLES, DUCTS, BEAMS, SOFFITS, ETC. - TYP.
- ALL EXISTING WINDOWS & FRAMES ARE TO BE SANDED SMOOTH, PRIMED AND PAINTED.
- INCLUDE IN THE BASE BID THE ADJUSTING (ADAPTING/LEVELING) OF ALL CEILING MOUNTED FIXTURES, EQUIPMENT, CONDUITS, ETC. AS REQUIRED TO BE IN LINE WITH NEW CEILING. THIS INCLUDES EXTENDING/RELOCATING THE BLOCKING.
- IF APPLICABLE: INCLUDE IN THE BASE BID THE REQUIRED WORK TO ALIGN & LEVEL THE NEW GYP. BD. CEILING (NEW/PATCHED) TO BE LEVELED WITH THE EXISTING FINISHED CEILING AND TO OBTAIN THE REQUIRED FINISH LEVEL (INCLUDE MULTIPLE GYP. BD. LAYERS, MUDDING, ETC.) - THE EXISTING CEILING ASSEMBLY IS A THICK PLASTER OVER WOOD LATH. REFER TO THE AVAILABLE AS-BUILT.
- INCLUDE IN THE BASE BID 20% (MEASURED WITHIN THE PERIMETER OF THE ROOM) OF STUD & SILL REPLACEMENT DUE TO DRY-ROT. CONSTRUCTION WILL REQUIRE NEW 6X STUD (FL-TO-CEIL) AND/OR SILL (TO MATCH EXISTING SIZE) AND ADDING REQUIRED ANCHOR BOLTS (4" O.C.). INCLUDE ALL PALSTER WALL PATCHING & FINISHING.
- NOT USED
- INCLUDE IN THE BASE BID NEW CONCRETE CURBS AT ALL NEW PARTITIONS/WALLS.
- NOT USED
- INCLUDE IN THE BASE BID THE REBUILD OF THE EXISTING FLOOR ASSEMBLY (CONCRETE & GROUT): COORDINATE WITH THE DEMOLITION NOTE #10. SLOPE THE FINISH FLOOR AS REQUIRED TO THE FLOOR DRAINS & DO NOT EXCEED 1:48 SLOPE IN ALL DIRECTIONS (PATH-OF-TRAVEL). CONNECT THE NEW FINISH FLOOR LEVELED TO THE NEW DOOR THRESHOLD.
- ALL NEW TOILET COMPARTMENT-PARTITIONS (PANELS) TO BE 7" HIGH MINIMUM, UNLESS OTHERWISE NOTED. SUBMIT SAMPLE TO THE MUDSO FOR APPROVAL PRIOR TO ORDERING.
- PROVIDE 1 NEW EXHAUST FAN AT EACH TOILET. SCOPE TO INCLUDE ALL DEMOLITION, CONSTRUCTION, LABOR & MATERIAL FOR THE INSTALLATION OF THE NEW EXHAUST FAN & RELATED ASSEMBLY (DUCT INCLUDED). INCLUDE MECHANICAL, ELECTRICAL, STRUCTURAL & BUILT-UP ROOFING WORK AND PARTS. ELECTRICAL: INTERCEPT (E) SWITCHED LEG OF NEAREST LIGHT FIXTURE (ESTIMATED @ ±20') AND RUN (CONCEALED) (N) CONDUIT AND WIRES TO THE (N) EXHAUST FAN AS REQUIRED. PROVIDE (N) HIGH-SPEED RATED MANUAL SWITCH (SEA 120V, SINK TO SOURCE) TO SOURCE (N) CLASS 2510. PRODUCT: AOME DIRECT DRIVE CENTRIFUGAL ROOF EXHAUSTER MODEL PRN (SEE CUT SHEETS).

# PLUMBING SCHEDULE

- SEE CUTSHEETS FOR PLUMBING PRODUCT
- 1A FLOOR MOUNTED WATER CLOSET MODEL: ELEMENTARY AMERICAN STANDARD MADERA FLOWISE 15" HEIGHT ELONGATED WITH EVERCLEAN FLUSHMETER TOILET. SEAT COLOR WHITE #901100 SS STAINLESS STEEL HINGE POSTS FLUSHMETER VALVE: AMERICAN STANDARD 1.28 GPF MANUAL #6047.121.002 TOP SPUD SEE CUT SHEETS, FOLLOW MANUFACTURER RECOMMENDATIONS & INCLUDE ALL PARTS, MATERIAL & LABOR.
  - 1B FLOOR MOUNTED WATER CLOSET MODEL: MIDDLE SCHOOL / ADULT AMERICAN STANDARD MADERA FLOWISE 16" HEIGHT ELONGATED WITH EVERCLEAN FLUSHMETER TOILET. SEE 1A FOR FLUSHMETER VALVE AND SEAT. SEAT COVER 1" THICK
  - 1C FLOOR MOUNTED WATER CLOSET MODEL: PRESCHOOL BABY DEVORO FLOWISE 10" HIGH # 2282.001 TOP SPUD FLUSH VALVE MANUAL AMERICAN STANDARD # 6047.121.002 SEAT AMERICAN STANDARD # 5001G.055 HEAVY DUTY SS HINGE POSTS
  - 2 WALL MOUNTED WATER CLOSET MODEL: AMERICAN STANDARD AFWALL MILLENNIUM FLOWISE ELONGATED W/EVERCLEAN TOP SPUD FLUSHMETER TOILET. SEAT #901100 SS HINGE POSTS FLUSHMETER #6047.121.002 MANUAL 1.28 GPF -SEE DET. 16 ON SHEET A-500 SEE CUT SHEETS, FOLLOW MANUFACTURER RECOMMENDATIONS & INCLUDE ALL PARTS, MATERIAL & LABOR.
  - 3 LAVATORY MODEL: AMERICAN STANDARD LUCERNE WALL-HUNG LAVATORY - SINGLE CENTER FAUCET HOLE WITH DELTA METERING FAUCET MODEL NO. 877105, SEE CUT SHEETS, FOLLOW MANUFACTURER RECOMMENDATIONS & INCLUDE ALL PARTS, MATERIAL & LABOR.
  - 4 URINAL - SEE CONSTRUCTIONNOTES #56/A300 A. WATERLESS - ANZA MODEL#2005, OR EQUIVALENT - OPC B. FLUSH-URINAL & FLUSHMETER: AMERICAN STANDARD PINTBROOK URINAL #6002.001 0.125 GPF. SEE CUT SHEETS, FOLLOW MANUFACTURER RECOMMENDATIONS & INCLUDE, ARM-BRACKETS & LABOR.

# PIPING SCHEDULE

SYSTEM NAME	MATERIAL	PIPING & FITTING JOINTS
DOMESTIC COLD WATER	TYPE L COPPER	LEAD FREE SOLDERED FITTINGS
SANITARY WASTE	NO-HUB CAST IRON	NO-HUB FITTINGS
SANITARY VENT	TYPE DWV COPPER	LEAD FREE SOLDERED FITTINGS

REFER TO THE ATTACHED REFERENCE A500 SHEET FOR ASSUMED GENERAL LOCATION OF SANITARY WASTE, VENT & WATER LINES

# FINISH SCHEDULE

ROOM NAME	FLOOR	BASE	WALL	CEILING	REMARKS
BOYS TOILET	CERAMIC TILES	CERAMIC TILES	CERAMIC TILES / PAINT	PATCH & PAINT ALL	SEE DET. 13/A-500
GIRLS TOILET	CERAMIC TILES	CERAMIC TILES	CERAMIC TILES / PAINT	PATCH & PAINT ALL	SEE DET. 13/A-500

NOTES:

- USE GOLD BOND XP GYPSUM BOARD AS A HEAVY MOLD/MILDEW/MOISTURE RESISTANT. SEE CONSTRUCTION NOTE NO. 8 AND DETAIL 14/A-500 FOR ADDITIONAL INFORMATION
- ALTERNATE: PROVIDE ALL SCHLUTER SATIN ANODIZED ALUMINUM PROFILE TRANSITION SYSTEMS: COVED, OUTSIDE/INSIDE CORNER WALLS, BULLNOSE TRIM (© WAINSCOT)
- ALL EXISTING AND/OR NEW WALL/CEILING FINISH TO BE LEVEL 5, TYP.
- ALL NEW CEILING/WALL FINISHES MUST BE SKIMMED LEVELED WITH THE ADJACENT FINISH SURFACE (NEW OR EXISTING) TO PROVIDE SMOOTH & EVEN PLANES. MUD AS REQD.

# DOOR SCHEDULE

ABBREVIATION: HM - HOLLOW METAL  
WD - PAINTED SOLID WOOD TO MATCH (E)

DOOR	FRAME	DETAILS	HARDWARE GROUP	FIRE RATING	REMARKS				
No.	WIDTH	HEIGHT	THK	MAT TYPE	MAT TYPE	THRESHOLD	JAMB	HEAD	
1	3'-0"	7'-0"	1-3/4"	FRP	-	HM	-	8/A-200 (N) (N)	SEE CUT SHEET FOR FRP DOOR / KICK PLATES AND DOOR LOUVERS. SEE PROVIDE NEW CONT. HINGES, COMPLETE HARDWARE & CLOSER UON. SEE SPEC. FOR HARDWARE GROUP NO. 2
2	EXISTING (3'x7")	DOOR & FRAME TO REMAIN	(E)	-	8/A-200	(E)			SEE NOTES ✱ BELOW. SEE DET. 15/A.500 3.4/A.500

DOOR AT TOILET-STALL

ACCESS STALL: DOOR 34" MIN. CLR PER MANUF. STD. STALL: PER MANUFACTURER OF PARTITION SYSTEM ASSEMBLY

PROVIDE 1 COAT-HOOK PER DOOR. INSTALL © 40" A.F.F. MAINTAIN MIN. 4" CLEAR FROM STRIKE-SIDE TO EDGE OF ADJACENT PARTITION PULL AT BOTH SIDES OF DOOR AT ACCESSIBLE TOILETS

- NOTES FOR EXISTING DOORS TO REMAIN: ✱
- SEE DETAIL 13 ON SHEET A-500 FOR DOOR AND FRAME TYPE INFORMATION. VERIFY IN FIELD TO MATCH EXISTING CONDITION.
  - ALL DOORS: PROVIDE NEW CONTINUOUS HINGES, COMPLETE HARDWARE & CLOSER ASSEMBLY PER DISTRICT STANDARDS. SEE SPECIFICATION SECTION 08 71 00 FOR HARDWARE GROUP NO. 2
  - CONTRACTOR MUST ADJUST/ SAND / REFURBISH & PAINT THE EXISTING WOOD FRAME AND WOOD DOOR THAT ARE TO REMAIN LIKE NEW CONDITION.
  - PROVIDE ALL (E) DOORS WITH BOTTOM LOUVER AND KICK PLATES. PROVIDE KICK PLATES 10'x34" STAINLESS STEEL © PULL AND PUSH SIDE OF DOORS. SEE 13/A.500

# TOIL. ACCESSORIES SCHEDULE

THE FOLLOWING ACCESSORIES ARE NEW & MUST BE PROVIDED AT ALL WATER CLOSETS COMPARTMENTS & SINKS SINKS AS PART OF THE SCOPE OF WORK EVEN IF NOT SHOWN ON THE FLOOR PLANS. SEE CUTSHEETS FOR TOILET ACCESSORIES PRODUCT

MARK	ITEM	CAT. NO	MOUNTING	REMARKS
A	36" GRAB BAR	BOBRICK 6806X36		SEE DETAIL 12/A-500
B	42" GRAB BAR	BOBRICK 6806X42		SEE DETAIL 12/A-500
C1	TOILET TISSUE DISPENSER	KC PROFESSIONAL 09612 JRT JUMBO ROLL	SURFACE MOUNTED	© NON ACCESSIBLE STALLS - COORDINATE W/ CUT SHEETS
C2	SANITARY NAPKIN DISPOSAL	BOBRICK B-2888	SURFACE MOUNTED	© ACCESSIBLE STALLS - COORDINATE W/ CUT SHEETS
D	SOAP DISPENSER	DEB GROUP PROLINE CURVE 1000 WHITE WITH CHROME	SURFACE MOUNTED	1 © ALL GIRLS' TOILET STALL ONLY
E	WASTE RECEPTACLE	BOBRICK B-2250	FLOOR-STANDING	1 PER ROOM
F	MIRROR (STAINLESS STEEL)	BOBRICK B-1556	24"x36" SURFACE MOUNTED	SEE DETAIL 11/A-500 1 PER ROOM - FURR BRND MIRROR (TRANSITION TILES AND GYP. BD.) AS REQUIRED TO OBTAIN A LEVELED VERTICAL MIRROR. PAINT AND FINISH AS REQD.
H	SEAT-COVER DISPENSER	BOBRICK B-221	SURFACE MOUNTED	1 PER TOILET
J1	PAPER TOWEL DISPENSER	KIMBERLY CLARK LEVERMATIC # 0865	SURFACE MOUNTED	1 PER ROOM OFCI
J2	ELECT HAND DRYER	XLERATOR XL-SB RECESSED #40502	RECESSED	1 PER ROOM
K	NAPKIN / TAMPON VENDOR	B-370634C	SEMI RECESSED	1 © GIRLS RESTROOM ONLY

NOTE: PROVIDE BLOCKING FOR ALL TOILET ROOM ACCESSORIES, SEE FLOOR PLANS & INTERIOR ELEVATIONS FOR LOCATIONS. COORDINATE WITH 

2	6	10	11	12
A.500	A.500	A.500	A.500	A.500

# TOILET PARTITION SYSTEM

BOBRICK 2080 DURALINE SERIES PHENOLIC TOILET PARTITION FLOOR MOUNTED OVERHEAD BRACED 18-8, 304 STAINLESS STEEL HARDWARE. SEE CONSTRUCTION NOTES #6 THIS SHEET FOR ALL TOILET COMPARTMENT PARTITIONS CONDITION.

PROVIDE BUMPER GUARD TO ALL PARTITION DOORS.

PROVIDE CONTINUOUS FURRING /FINISHED LEVELED BACKING © UNEVEN FINISHES (TRANSITION TILES TO WALL) FOR CONTINUOUS BRACING.



1936 Carlotta Dr.,  
Concord, CA 94519



3211 Romino Way  
Lafayette, California 94549  
925.949.8333 tel.

STRUCTURAL ENGINEER  
TSA STRUCTURAL ENGINEERS

433 AIRPORT BLVD., #106E  
BURLINGAME, CA 94010  
TEL. (650) 620-9555

PROJECT TITLE:  
**MAINTENANCE WORK  
PLUMBING AND FINISHES  
AT STUDENTS'  
RESTROOMS**

KEY PLANS:

REVISIONS:

date	description	symbol
3/14/2018	NON DSA	

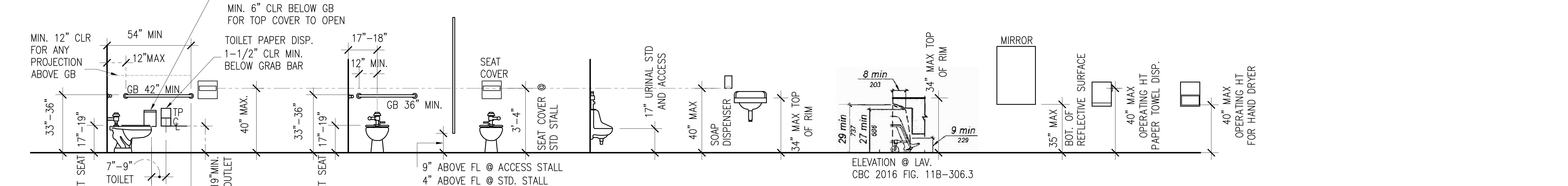
PHD ARCHITECTS JOB #  
17-215

SCALE:  
AS NOTED

DATE:  
1/30/18

SHEET NAME & NUMBER:  
**GENERAL CONSTRUCTION  
NOTES & SCHEDULES**

**A-300**



FIXTURES AND ACCESSORIES MOUNTING HEIGHT FOR MIDDLE SCHOOL AND HIGH SCHOOL PER CBC 2016







# STRUCTURAL SPECIFICATIONS

## DESIGN CRITERIA

CODES  
CALIFORNIA BUILDING CODE 2016 EDITION, TITLE 24, PART 2.

## STRUCTURAL SPECIFICATIONS

### CAST-IN-PLACE CONCRETE

#### TESTING AND INSPECTION BY THE OWNER'S TESTING LABORATORY

1. THE OWNER'S TESTING LABORATORY WILL REVIEW CONCRETE MIX DESIGNS, CEMENT CHEMICAL ANALYSIS, CERTIFICATES OF COMPLIANCE, AS SUPPLIED BY THE CONTRACTOR FOR CONFORMANCE TO 2013 CBC, SECTION 1903A AND THESE SPECIFICATIONS.
2. REVIEW OF: CONTRACTOR SUBMITTALS, BATCH PLANT CERTIFICATES, ADMIXTURES, ETC.
3. TEST AGGREGATES PER CBC.
4. BATCH PLANT INSPECTION IN ACCORDANCE WITH CBC.
5. ALL CEMENT USED SHALL BE SAMPLED BY THE OWNER'S TESTING LABORATORY IN ACCORDANCE WITH CBC. CEMENT SAMPLES SHALL BE HELD FOR POSSIBLE TESTING UNTIL COMPLETION OF CONSTRUCTION CONCRETE STRENGTH  $f'_{c} = 3000$  PSI
6. CONSTRUCTION TESTING AND INSPECTION:
  - A. REVIEW AND/OR PROPOSE ADJUSTMENTS TO REVIEWED MIX DESIGNS TO ACCOUNT FOR SITE, WEATHER CONDITIONS, ETC.
  - B. THE OWNER'S TESTING LABORATORY INSPECTOR WILL MAKE A SET OF THREE (3) SPECIMENS AT THE JOB FOR EACH CLASS OF CONCRETE FOR EACH 50 CUBIC YARDS, OR FRACTION THEREOF AND NOT LESS THAN ONE SET FOR EACH 2,000 SQUARE FEET OF SURFACE AREA FOR SLABS OR WALLS, OF EACH GRADE OF STRUCTURAL CONCRETE USED FOR EACH DAY'S PLACEMENT EXCEPT WHEN THE TOTAL VOLUME OF ANY ONE GRADE OF CONCRETE EXCEEDS 150 CUBIC YARDS PLACED PER DAY, THERE SHALL BE NOT LESS THAN ONE TEST FOR EACH 150 YARDS, OR FRACTION THEREOF, PLACED EACH DAY. PERFORM STANDARD 6"x12" CYLINDER TESTS IN ACCORDANCE WITH ASTM C31 & CBC STANDARDS. A RECORD OF THE LOCATION IN THE BUILDING OF EACH CONCRETE BATCH WILL BE KEPT AND NOTED ON THE SPECIMEN. STANDARD COMPRESSION TESTS OF CYLINDERS WILL BE MADE, ONE AT 7 DAYS AND ONE AT 28 DAYS IN ACCORDANCE WITH ASTM C39 & CBC.
  - C. THESE CYLINDERS WILL REPRESENT AS NEARLY AS POSSIBLE THE BATCH OF CONCRETE FROM WHICH THEY ARE TAKEN, AND WILL BE TESTED AT THE AGES OF 7 AND 28 DAYS RESPECTIVELY (2 CYLINDERS), WITH ONE IN RESERVE. THE STRENGTH OF THE CONCRETE IS THE AVERAGE OF THE COMPRESSION STRENGTH OF TWO CYLINDERS TESTED AT 28 DAYS. IF THE STRENGTH OF THE MOLDED TEST CYLINDERS FALLS BELOW THE MINIMUM ULTIMATE COMPRESSIVE STRENGTH IN DESIGN, THE PROPORTION OF THE CONCRETE MIX OF THE REMAINING PORTION OF THE STRUCTURE SHALL BE ADJUSTED AS TO GIVE CONCRETE OF THE ASSUMED STRENGTH. THE DEFECTIVE CONCRETE IN PLACE SHALL BE TESTED BY TAKING CORES FROM THE STRUCTURE AS OUTLINED IN CBC, SECTION AT THE CONTRACTOR'S EXPENSE.
  - D. IF THE COMPRESSION TESTS OF THE CORE SPECIMENS FAIL TO SHOW THE COMPRESSIVE STRENGTH CALLED FOR AS A MINIMUM, THE CONCRETE WILL BE DEEMED DEFECTIVE AND SHALL BE REMOVED AND REPLACED OR ADEQUATELY STRENGTHENED IN A MANNER ACCEPTABLE TO THE DSA & THE OWNER AT THE CONTRACTOR'S EXPENSES
  - E. NOTE: WHERE A CYLINDER TESTED AT 7 OR 28 DAYS IS IN EXCESS OF DESIGN STRENGTH, NO FURTHER TESTING WILL BE DONE. THE CONTRACTOR SHALL PROVIDE A SATISFACTORY BIN FILLED WITH DAMP SAND FOR STORAGE OF THE SPECIMEN CYLINDERS UNTIL DELIVERED TO THE LABORATORY.
7. NON-STRUCTURAL CONCRETE
  - A. TESTING AND INSPECTION IS NOT REQUIRED.
8. SLUMP TEST AND AIR TESTS WILL BE MADE AT THE TIME OF TAKING TEST SPECIMENS, AND/OR AT ONE-HOUR INTERVALS DURING PLACING OF CONCRETE IN ACCORDANCE WITH ASTM D143.9.
9. TESTING OF DRILLED AND/OR GROUTED CONCRETE ANCHORS: TESTING LABORATORY SHALL TEST ALL SUCH ANCHORS AS NOTED ON THE DRAWINGS.
10. THE INSPECTOR WILL OBTAIN, FOR EACH TRANSIT MIXER, BATCH CERTIFICATES FOR EACH DELIVERY, INDICATING BATCH DATE, TIME, INGREDIENT QUANTITIES, WATER ADDED AT PLANT AND JOB SITE, AND NUMBER OF MIXER REVOLUTIONS UP TO START OF PLACING.
11. THE LABORATORY'S INSPECTOR WILL REPORT TO THE CONTRACTOR WHEN MATERIAL DOES NOT MEET THE REQUIREMENTS NOTED HEREIN. THE CONTRACTOR SHALL DISALLOW USE OF SUCH MATERIAL UNLESS PRIOR APPROVAL FOR USE IS GIVEN BY THE ARCHITECT/ENGINEER AND THE OSHPD.

### MATERIALS

1. PORTLAND CEMENT: ASTM C150, TYPE II WITH THE FOLLOWING PROPERTIES:
  - A. MAXIMUM PERCENTAGE (BY WEIGHT) OF THE FOLLOWING COMPOUNDS IS LIMITED TO: TRI-CALCIUM ALUMINATE - 6% TRI-CALCIUM ALUMINATE AND TRI-CALCIUM SILICATE 60%
2. CEMENT SHALL CONFORM TO CBC.
3. CONCRETE AGGREGATES: ASTM C33 AND CBC, STONE AGGREGATE. SOURCE SHALL REMAIN CONSTANT THROUGHOUT THE DURATION OF THE JOB. THE EXACT PROPORTIONS OF COMBINED FINE AGGREGATES AND COURSE AGGREGATES TO BE USED IN THE MIX SHALL MEET THE REQUIREMENTS OF CBC.
4. WATER: POTABLE, CLEAN, FROM DOMESTIC SOURCE:
  - A. ADMIXTURES: ALL ADMIXTURES SHALL BE USED IN STRICT ACCORDANCE WITH THE MANUFACTURER'S RECOMMENDATIONS. ADMIXTURES CONTAINING CALCIUM CHLORIDES SHALL NOT BE USED WITHOUT THE APPROVAL OF THE ARCHITECT/ENGINEER AND THE OWNERS TESTING LABORATORY. ADMIXTURES SHALL CONFORM TO CBC.
  - B. WATER REDUCING ADMIXTURES: ASTM C494, TYPE A; "POZZOLITH 300R", MASTER BUILDERS; WRDA 79, WR GRACE CO.; APPROVED EQUAL.
  - C. WATER REDUCING ADMIXTURES AND RETARDER: ASTM C494, TYPE D; "POZZOLITH 300R", MASTER BUILDERS; "PLASTIFLOW-R" BY NOX-CRETE; OR APPROVED EQUAL.
  - D. AIR ENTRAINMENT: MBAE-10, MASTER BUILDERS AIR ENTRAINMENT.

## STRUCTURAL SPECIFICATIONS (CONTINUE)

### CONCRETE MIXES

1. CONTRACTOR SUBMITTALS SHALL BE SUPPLIED TO THE DSA, THE PI AND THE OWNER'S TESTING LABORATORY AT LEAST 15 DAYS BEFORE PLACING CONCRETE.
2. THE PROPORTIONS OF THE CONCRETE MIXES SHALL BE SUCH AS TO PRODUCE CONCRETE OF REQUIRED: AVERAGE STRENGTH (AS DESCRIBED BY CBC SECTION 1905A), SET TIME, SLUMPS, AGGREGATE SIZES, SHRINKAGE, AND OF A CONSISTENCY THAT WILL ALLOW THOROUGH COMPACTION WITHOUT EXCESSIVE PUDDLING, SPADING, OR VIBRATION, AND WITHOUT PERMITTING THE MATERIALS TO SEGREGATE, OR FREE WATER TO COLLECT ON THE SURFACE. THE SIZE OF AGGREGATES SHALL BE SUCH THAT IT WILL PRODUCE DENSE AND UNIFORM CONCRETE FREE FROM ROCK POCKETS, HONEYCOMB AND OTHER IRREGULARITIES. ALL CONCRETE MIXES SHALL HAVE ENTRAINED AIR FOR WORKABILITY (4% MAXIMUM). THE MINIMUM SET TIME FOR CONCRETE TO BE USED FOR FLATWORK SHALL BE 3-1/2 HOURS, OTHER CONCRETE 3 HOURS AS MEASURED FROM PLACEMENT OF MATERIALS IN THE MIXER.
3. PRIOR TO SUBMITTAL OF MIX DESIGNS THE CONTRACTOR SHALL REVIEW THEM FOR COMPATIBILITY WITH HIS PLACING REQUIREMENTS TO INSURE THAT THE CONCRETE AS DESIGNED CAN BE PLACED IN ACCORDANCE WITH THE DRAWINGS AND SPECIFICATIONS.
4. CONCRETE MAY, AT THE CONTRACTOR'S OPTION, BE DESIGNED FOR EITHER PUMP OR CONVENTIONAL PLACEMENT WITH AGGREGATE SIZE, SLUMPS, ETC. TO BE MAINTAINED AS SPECIFIED BELOW.
5. VARIATIONS IN MIX DESIGN ARE TO BE RESUBMITTED FOR REVIEW PRIOR TO USE.

### CURING

CURING SHALL IMMEDIATELY FOLLOW FINISHING.

1. FLATWORK ON GRADE: CURE BY ONE OF THE FOLLOWING METHODS:
  - A. WATERPROOF CURING PAPER: WHILE IN THOROUGHLY DAMP CONDITION, COVER WITH CURING PAPER; LAP SEAMS 6" MINIMUM AND EXTEND BEYOND SLAB OR PAVING PERIMETERS 6" MINIMUM; SEAL ALL LAPS AND EDGES WITH CONTINUOUS REINFORCING PLASTIC TAPE. DO NOT REMOVE FOR 7 DAYS MINIMUM.
  - B. WATER CURING: FLATWORK MAY BE CONTINUOUSLY WATER CURED WITH A FOG SPRAY OR FLOODED, FOR A PERIOD OF (7) DAYS MINIMUM (INCLUDING HOLIDAYS AND WEEKENDS).

2. FORMED CONCRETE MEMBERS:
  - A. BEAMS, WALLS, COLUMNS, ETC., SHALL BE KEPT CONTINUOUSLY WET FOR A MINIMUM OF SEVEN (7) DAYS AFTER PLACEMENT, AND SHALL BE ADEQUATELY PROTECTED FROM COLD AND HOT WEATHER.
  - B. FORMS SHALL BE KEPT TIGHT FOR THIS MINIMUM PERIOD OF TIME.
  - C. COVER EXPOSED SURFACES WITH DAMP CLOTH MATERIALS.

### CONCRETE REINFORCEMENT

#### TESTING AND INSPECTION

1. REINFORCING STEEL IS TO BE SAMPLED AND TESTED BY THE OWNERS TESTING LABORATORY IN ACCORDANCE WITH ASTM A615 AND, 2013 CBC.
2. MATERIAL TESTS: WHERE SAMPLES ARE TAKEN FROM BUNDLES AS DELIVERED FROM THE MILL, WITH THE BUNDLES IDENTIFIED AS TO HEAT NUMBER, AND PROVIDED THE MILL ANALYZES ACCOMPANY THE REPORT, THEN ONE TENSILE TEST AND ONE BENT TEST SHALL BE MADE FROM A SPECIMEN FROM EACH 10 TONS OR FRACTION THEREOF EACH SIZE OF REINFORCING STEEL. WHERE IDENTIFICATION OF MATERIALS BY HEAT NUMBER TO MILL TESTS CANNOT BE MADE, THE CONTRACTOR SHALL HAVE THE MATERIALS TESTED AT HIS EXPENSE, MAKE ONE SERIES OF TENSION AND BEND TESTS FOR EACH 2-1/2 TONS OR FRACTION THEREOF EACH SIZE AND TYPE OF REINFORCING STEEL. TESTS SHALL BE PERFORMED BY A QUALIFIED TESTING LABORATORY.

#### SUBMITTALS

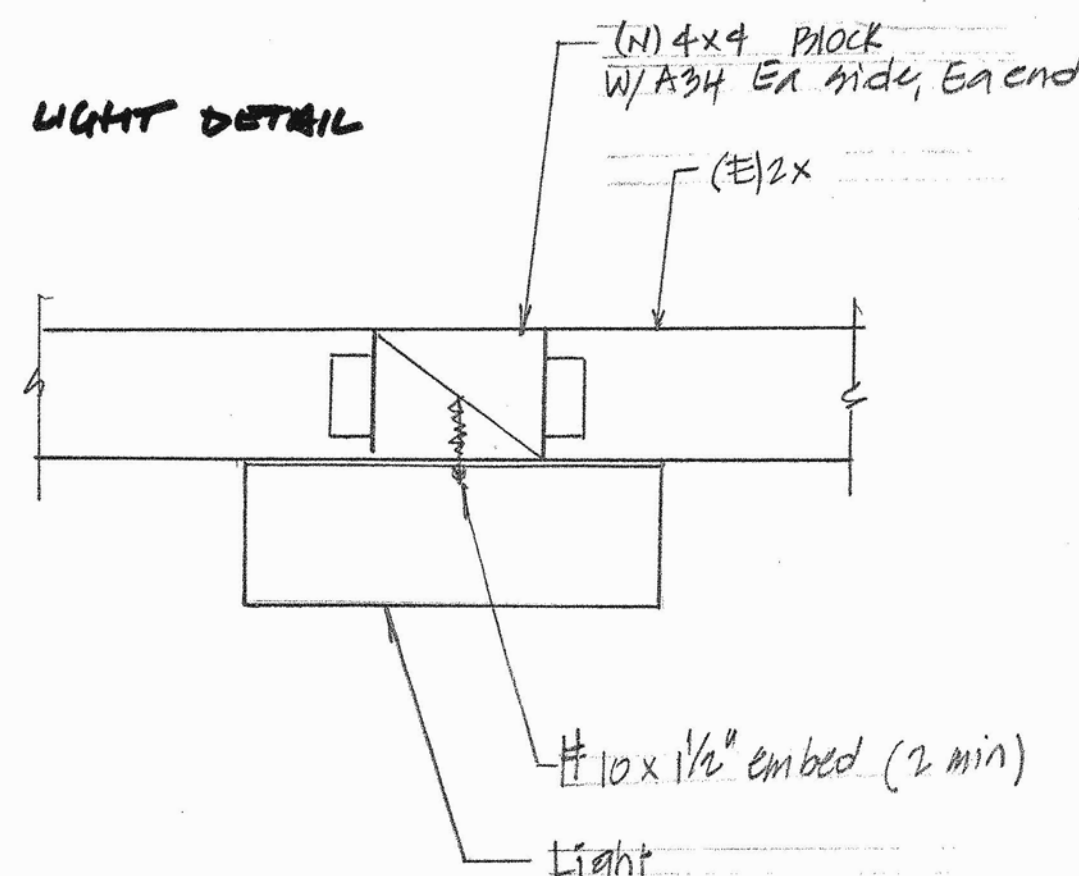
1. THE FABRICATOR SHALL PROVIDE THE OWNER'S TESTING LABORATORY MANUFACTURER'S MILL TEST REPORTS FOR THE MATERIALS TO BE USED ON THE JOB. THESE REPORTS ARE TO INCLUDE CHEMICAL AND PHYSICAL PROPERTIES OF THE REINFORCING FOR EACH HEAT NUMBER MANUFACTURED. ALL FABRICATED MATERIALS TO BE TAGGED WITH HEAT NUMBER.

#### MATERIALS

1. REINFORCING BARS - NEW BILLET STEEL, ASTM A615, GRADE 40 #4 AND SMALLER, GRADE 60 #5 AND LARGER EXCEPT STIRRUPS AND COLUMN TIES, WHICH SHALL BE GRADE 40.
2. TIE WIRE: NO. 16 AWG OR HEAVIER, BLACK ANNEALED.

#### DOWELS, SPLICING AND OFFSETS

1. BARS SHALL BE SPREAD THE MINIMUM DISTANCE SPECIFIED. STAGGER SPLICES 50% OF ADJACENT BARS. BEAM OR SLAB TOP BARS SHALL BE SPLICED MID-SPAN OF COLUMN SUPPORT AND BOTTOM BARS SPLICED AT COLUMN SUPPORTS. ALL SPLICES NOT SHOWN ON THE DRAWINGS SHALL BE APPROVED BY ARCHITECT/ENGINEER. ALL SPLICES AND LAPS AT CORNERS AND INTERSECTIONS SHALL BE TIED WITH WIRE AT EACH END.



## STRUCTURAL SPECIFICATIONS (CONTINUE)

### ROUGH CARPENTRY

#### I. REFERENCE STANDARD

1. CALIFORNIA BUILDING CODE 2013 EDITION, CHAPTER 23 (NOTED HEREIN AS CBC)
2. "NATIONAL DESIGN SPECIFICATIONS", 2012 EDITION.

#### II. MATERIALS

##### A. FASTENERS:

1. GENERAL REQUIREMENTS FOR FASTENERS:

- a. FASTENINGS SHALL BE OF ADEQUATE SIZE AND TYPES FOR THE PURPOSES FOR WHICH THEY ARE USED AND AS SHOWN ON THE DRAWINGS.
- b. INCLUDE WASHERS, PRE-DRILLING, ETC. REQUIRED FOR INSTALLATION.
- c. FOR EXTERIOR WORK, FASTENINGS SHALL BE HOT DIP GALVANIZED, NON-FERROUS, OR MADE RUST-RESISTANT BY APPROVED METHODS.

2. NAILS AND NAILING NOT OTHERWISE SHOWN OR SPECIFIED:
  - a. FOR FRAMING, PLYWOOD AND GENERAL STRUCTURAL WOOD WORK.
    1. ALL NAILS SHALL BE OF BRIGHT COMMON WIRE WITH FULL ROUND HEADS, AND SHALL BE OF SUFFICIENT LENGTH TO EXCEED REQUIRED PENETRATION INTO THE SUPPORTING MEMBER BY 1/8".
    2. FRAMING NAILS SHALL BE HAND-DRIVEN AND SHALL MEET THE DIMENSIONAL REQUIREMENTS FOR COMMON WIRE NAILS OF THE CBC.
    3. PLYWOOD NAILS: HAND-DRIVEN NAILS SHALL CONFORM TO REQUIREMENTS ABOVE.
    4. PNEUMATICALLY (MACHINE) DRIVEN NAILS SHALL NOT BE USED WITHOUT A VALID ICC REPORT. CONTRACTOR SHALL PROVIDE FOR SUBMITTAL TO OWNER AND TO THE PI A CURRENT ICC REPORT, NAIL SAMPLE WITH NAIL DIMENSIONS, HEAD AND SHANK DIAMETER AND NAIL LENGTH, AND SPECIFICATIONS FOR THE NAILING DEVICE. NAILING DEVICE MUST BE ADJUSTABLE REGARDS THE DEPTH OF FOR EACH NORMAL FOR A HAND HAMMER, OR IF MINIMUM ALLOWABLE EDGE DISTANCES ARE NOT MAINTAINED, THE PERFORMANCE WILL BE DEEMED UNSATISFACTORY. NAILS AND NAILING SHALL ALSO CONFORM TO 1 ABOVE.
  - b. BOLTS:
    1. ASTM A-307, STANDARD SEMI-FINISHED MACHINE BOLTS AS SHOWN, WITH MALLEABLE IRON WASHERS OR STEEL PLATE WASHERS UNLESS OTHERWISE SHOWN.
    2. POWDER-ACTUATED FASTENINGS: USE ONLY AS APPROVED BY THE ARCHITECT AND DSA.

- a. FOR FRAMING, PLYWOOD AND GENERAL STRUCTURAL WOOD WORK.
  1. ALL NAILS SHALL BE OF BRIGHT COMMON WIRE WITH FULL ROUND HEADS, AND SHALL BE OF SUFFICIENT LENGTH TO EXCEED REQUIRED PENETRATION INTO THE SUPPORTING MEMBER BY 1/8".
  2. FRAMING NAILS SHALL BE HAND-DRIVEN AND SHALL MEET THE DIMENSIONAL REQUIREMENTS FOR COMMON WIRE NAILS OF THE CBC.
  3. PLYWOOD NAILS: HAND-DRIVEN NAILS SHALL CONFORM TO REQUIREMENTS ABOVE.
  4. PNEUMATICALLY (MACHINE) DRIVEN NAILS SHALL NOT BE USED WITHOUT A VALID ICC REPORT. CONTRACTOR SHALL PROVIDE FOR SUBMITTAL TO OWNER AND TO THE PI A CURRENT ICC REPORT, NAIL SAMPLE WITH NAIL DIMENSIONS, HEAD AND SHANK DIAMETER AND NAIL LENGTH, AND SPECIFICATIONS FOR THE NAILING DEVICE. NAILING DEVICE MUST BE ADJUSTABLE REGARDS THE DEPTH OF FOR EACH NORMAL FOR A HAND HAMMER, OR IF MINIMUM ALLOWABLE EDGE DISTANCES ARE NOT MAINTAINED, THE PERFORMANCE WILL BE DEEMED UNSATISFACTORY. NAILS AND NAILING SHALL ALSO CONFORM TO 1 ABOVE.

1. ALL NAILS SHALL BE OF BRIGHT COMMON WIRE WITH FULL ROUND HEADS, AND SHALL BE OF SUFFICIENT LENGTH TO EXCEED REQUIRED PENETRATION INTO THE SUPPORTING MEMBER BY 1/8".
2. FRAMING NAILS SHALL BE HAND-DRIVEN AND SHALL MEET THE DIMENSIONAL REQUIREMENTS FOR COMMON WIRE NAILS OF THE CBC.
3. PLYWOOD NAILS: HAND-DRIVEN NAILS SHALL CONFORM TO REQUIREMENTS ABOVE.
4. PNEUMATICALLY (MACHINE) DRIVEN NAILS SHALL NOT BE USED WITHOUT A VALID ICC REPORT. CONTRACTOR SHALL PROVIDE FOR SUBMITTAL TO OWNER AND TO THE PI A CURRENT ICC REPORT, NAIL SAMPLE WITH NAIL DIMENSIONS, HEAD AND SHANK DIAMETER AND NAIL LENGTH, AND SPECIFICATIONS FOR THE NAILING DEVICE. NAILING DEVICE MUST BE ADJUSTABLE REGARDS THE DEPTH OF FOR EACH NORMAL FOR A HAND HAMMER, OR IF MINIMUM ALLOWABLE EDGE DISTANCES ARE NOT MAINTAINED, THE PERFORMANCE WILL BE DEEMED UNSATISFACTORY. NAILS AND NAILING SHALL ALSO CONFORM TO 1 ABOVE.

2. POWDER-ACTUATED FASTENINGS: USE ONLY AS APPROVED BY THE ARCHITECT AND DSA.

5. FRAMING HARDWARE: FABRICATED SHEET METAL TIMBER FRAMING MANUFACTURED FROM HOT-DIPPED GALVANIZED STEEL BY "SIMPSON COMPANY", SAN LEANDRO, "UNIVERSAL ANCHORS COMPANY" (SIMPSON CO. PER CATALOGUE NO. C2015 ARE IDENTIFIED ON THE DRAWINGS). CONNECTORS SHALL BE AT LEAST 16 GAUGE MATERIAL. NAILS AND NAILING SHALL CONFORM TO THE MANUFACTURER'S INSTRUCTIONS WITH A NAIL PROVIDED FOR EACH PUNCHED HOLE. ALL HEAVY HARDWARE TO BE FABRICATED FROM A-36 STEEL PER DIVISION 5.

6. ALL FASTENERS, NAILS AND BOLTS IN CONTACT WITH PRESSURE TREATED WOOD SHALL BE HOT DIPPED GALVANIZED.

- B. STRUCTURAL LUMBER AND PLYWOOD

1. LUMBER AND PLYWOOD GRADED AND GRADE MARKED PER STANDARDS SPECIFIED.

- a. SIZE PER INDUSTRY STANDARDS FOR NOMINAL SIZES SHOWN; S4S.
- b. MOISTURE CONTENT OF FRAMING: MAXIMUM 19% WHEN INSTALLED AND MAXIMUM 15% AT TIME OF CLOSE-IN. IN AREAS WITH DRY HOT SUMMER MONTHS, MAXIMUM 12% AT CLOSE-IN.
- c. STRUCTURAL FRAMING SHALL BE DOUGLAS FIR WITH GRADES AS NOTED BELOW UNLESS OTHERWISE SPECIFIED ON THE DRAWINGS. ALL GRADES PER WCLB STD GRADING RULES #17.

1. ALL PERMANENTLY EXPOSED FRAMING SHALL BE SELECT STRUCTURAL GRADE WITH NO BOX HEART.

2. EXCEPT PER 1 ABOVE, MINIMUM GRADES ARE:
  - \* ROOF 2X JOIST AND 2X RAFTERS D.F. NO. 2;
  - \* 4X AND LARGER D.F. NO. 1. BLOCKING DF NO. 1;

3. 6X POSTS, DF SELECT STRUCTURAL WITH NO BOX HEART.

4. MISCELLANEOUS FRAMING - D.F. NO. 2

5. APPLICABLE WCLB PARAGRAPHS FOR FRAMING:
  - \* 2 X 4 TO 4 X 4 PAR. 124
  - \* 2 X 6 TO 4 X 16, STRUCTURAL JOISTS AND PLANKS PAR. 123
  - \* BEAMS (6 X), BEAMS & STRINGERS PAR.130
  - \* POSTS (6 X) PAR. 131

- e. SPLITS AND CHECKS ARE TO BE LIMITED TO 1X THE DEPTH OF THE MEMBER.
- f. WARPED/TWISTED AND EXCESSIVELY CHECKED MEMBERS SHALL NOT BE USED REGARDLESS OF GRADE MARKS.

3. PLYWOOD

- ALL STRUCTURAL PLYWOOD SHALL BE GRADE MARKED FOR CONFORMANCE WITH CBC AND DEP'T OF COMMERCE, "PRODUCT STANDARD PS-1-07", AND SHALL BE FABRICATED WITH EXTERIOR GLUE. GRADES SHALL BE AS PER THE DRAWINGS.

- C. BUILDING PAPER

- WATERPROOF, NON-STAINING, LONG FIBERED KRAFT TYPE PAPER. F.S. UU-B-790, TYPE I OR II.

## STRUCTURAL SPECIFICATIONS (CONTINUE)

### ROUGH HARDWARE

- A. GENERAL: NAILS, SPIKES, SCREWS, FABRICATED SHEET METAL ANCHORS, TIES, HANGERS AND ANY OTHER MATERIALS SHOWN OR REQUIRED FOR THE ATTACHMENT OF WOOD TO CONCRETE, WOOD TO STEEL, AND WOOD TO WOOD SHALL BE FURNISHED AND INSTALLED AS PART OF THIS WORK.

- B. FRAMING NAILING: ALL FRAMING NAILING SHALL CONFORM TO MINIMUM REQUIREMENTS OF THE CBC, AND WITH DETAILS SHOWN ON THE DRAWINGS.

- C. BOLTS, LAG SCREWS AND WASHERS

1. BOLTS IN WOOD SHALL BE MACHINE BOLTS CONFORMING TO ASTM A-307, UNLESS OTHERWISE NOTED, AND SHALL BE OF SUCH LENGTH THAT NOT MORE THAN 1/2" OF THREAD WILL BEAR AGAINST WOOD. BOLT HOLES IN WOOD SHALL BE 1/32" OVERSIZED. BOLT HOLES FOR SILL PLATE MAY BE 1/16" MAXIMUM OVERSIZE. HOLES IN STEEL SHALL BE 1/16" OVERSIZED.

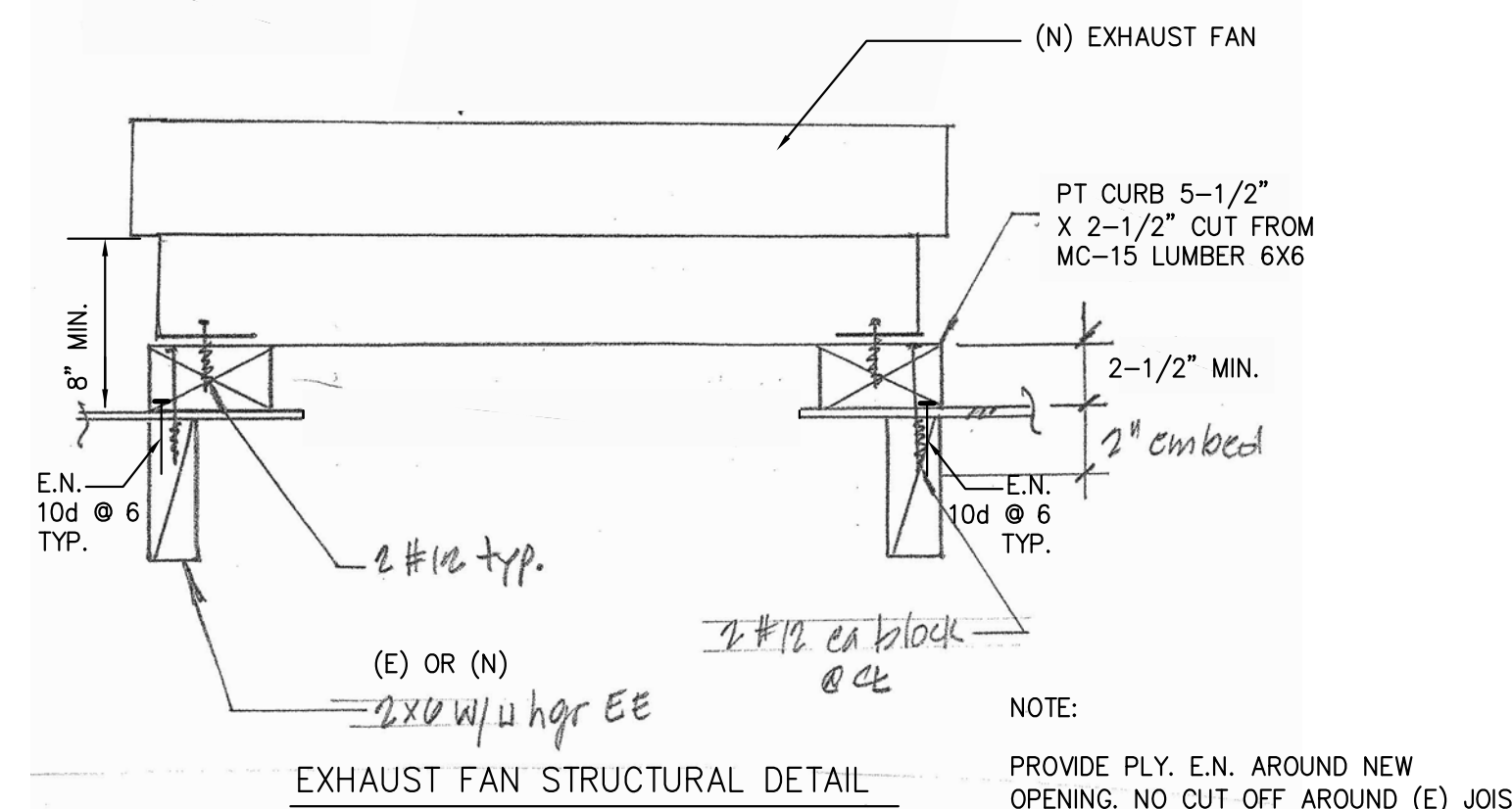
2. PROVIDE SQUARE PLATE OR MALLEABLE IRON WASHER AND NUT AT HEAD WHERE BEARING IS AGAINST WOOD; CUT WASHER UNDER NUT WHERE IT IS AGAINST STEEL. WASHER WILL NOT BE REQUIRED UNDER HEAD OF CARRIAGE BOLTS. PROVIDE MALLEABLE IRON WASHERS WHERE EXPOSED OR NOTED.

3. ALL NUTS SHALL BE TIGHTENED WHEN PLACED AND RETIGHTENED AT COMPLETION OF THE JOB OR IMMEDIATELY BEFORE CLOSING.

4. LAG SCREWS SHALL BE SCREWED, NOT DRIVEN, INTO PLACE. DRILL HOLES SAME DIAMETER AND DEPTH AS SHANK, THEN DRILL HOLES SAME DIAMETER AS AT BASE OF THREAD (60% TO 75% SHANK DIAMETER) FOR THE THREADED PORTION.

### ANCHOR AND TIES

- PROVIDE AND INSTALL ALL ANCHORS, BOLTS, TIES, ETC.. REQUIRED FOR THE TEMPORARY OR PERMANENT CARPENTRY WORK ANCHORS AND BOLTS SHALL BE ACCURATELY LOCATED WERE EMBEDDED IN CONCRETE AND SHALL BE SECURED IN POSITION BEFORE PLACING CONCRETE.



### EXPANSION ANCHORAGE IN CONCRETE

A. WEDGE ANCHORS- KWIKBOLT KB-TZ STEEL ( No: ER 1917) $f_{c} = 3000$ psi CRACKED			
BOLT SIZE	MINIMUM EMBEDMENT	TORQUE (FT-LBS) TEST	
3/8"	3"	30	
5/8"	4"	50	
3/4"	4"	110	

#### NOTES:

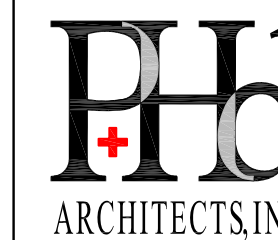
1. INSTALL DRILLED EXPANSION ANCHORS PER MANUFACTURER'S INSTRUCTIONS.
2. WHEN INSTALLING DRILLED-IN ANCHORS IN EXISTING REINFORCED CONCRETE, USE CARE AND CAUTION TO AVOID CUTTING OR DAMAGING THE EXISTING REINFORCING BARS. MAINTAIN A MINIMUM CLEARANCE OF ONE INCH BETWEEN REINFORCEMENT AND THE DRILLED-IN ANCHOR.
3. ALL TEST SHALL BE DONE IN THE PRESENCE OF THE IOR.

#### TESTING NOTES

1. APPLY PROOF TEST LOADS TO WEDGE & SLEEVE ANCHORS WITHOUT REMOVING THE NUT IF POSSIBLE. IF NOT REMOVE NUT & INSTALL A THREADED COUPLER TO THE SAME TIGHTNESS OF THE ORIGINAL NUT USING A TORQUE WRENCH & APPLY LOAD.
2. FOR SLEEVE INTERNALLY THREADED CATEGORIES, VERIFY THAT THE ANCHOR IS NOT PREVENTED FROM WITHDRAWING BY A BASEPLATE OR OTHER FIXTURES. IF RESTRAINT IS FOUND, LOOSEN AND SHIM OR REMOVE FIXTURE(S) PRIOR TO TESTING.
3. REACTION LOADS FROM TEST FIXTURES MAY BE APPLIED CLOSE TO THE ANCHOR BEING TESTED, PROVIDED THE ANCHOR IS NOT RESTRAINED FROM WITHDRAWING THE FIXTURE(S).
4. TEST EQUIPMENT IS TO BE CALIBRATED BY AN APPROVED TESTING LABORATORY IN ACCORDANCE WITH STANDARD RECOGNIZED PROCEDURES.
5. THE FOLLOWING CRITERIA APPLY FOR THE ACCEPTANCE OF INSTALLED ANCHORS: HYDRAULIC RAM METHOD: THE ANCHOR SHOULD HAVE NO OBSERVABLE MOVEMENT AT THE APPLICABLE TEST LOAD. FOR WEDGE AND SLEEVE TYPE ANCHORS, A PRACTICAL WAY TO DETERMINE OBSERVABLE MOVEMENT IS THAT THE WASHER UNDER THE NUT BECOMES BE REACHED WITHIN THE FOLLOWING LIMITS: WEDGE OR SLEEVE TYPE: ONE-HALF (1/2) TURN OF THE NUT. ONE-QUARTER (1/4) TURN OF THE NUT FOR THE 3/8 IN. SLEEVE ANCHOR ONLY.
6. TESTING SHOULD OCCUR 24 HOURS MINIMUM AFTER INSTALLATION OF THE SUBJECT ANCHORS.
7. TEST ALL ANCHORS



1936 Carlotta Dr.,  
Concord, CA 94519



ARCHITECTS, INC.

Architecture • Planning • Interiors

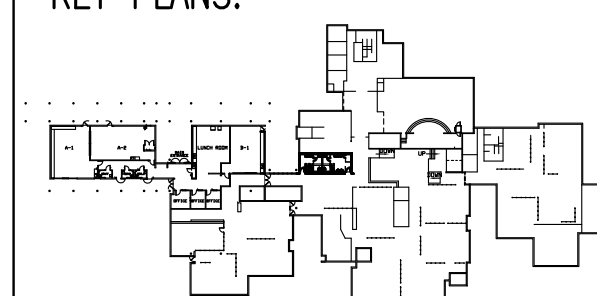
3211 Romino Way  
Lafayette, California 94549  
925.949.8333 tel.

STRUCTURAL ENGINEER  
TSA STRUCTURAL ENGINEERS

433 AIRPORT BLVD., #106E  
BURLINGAME, CA 94010  
TEL. (650) 620-9555

PROJECT TITLE:  
**MAINTENANCE WORK  
PLUMBING AND FINISHES  
AT STUDENTS'  
RESTROOMS  
WILLOW CREEK  
CENTER**

#### KEY PLANS:



#### REVISIONS:

date	description	symbol
	DISTRICT REVIEW	
3/14/2018	NON DSA	

PHD ARCHITECTS JOB #  
17-215

SCALE:  
AS NOTED

DATE:  
1/30/18

SHEET NAME & NUMBER:

STRUCTURAL  
SPECIFICATIONS

SSP