



MDUSD- Willow Creek Center

Location: 1026 Mohr Lane, Concord, CA

Project Number: 23_012.e/ 5101

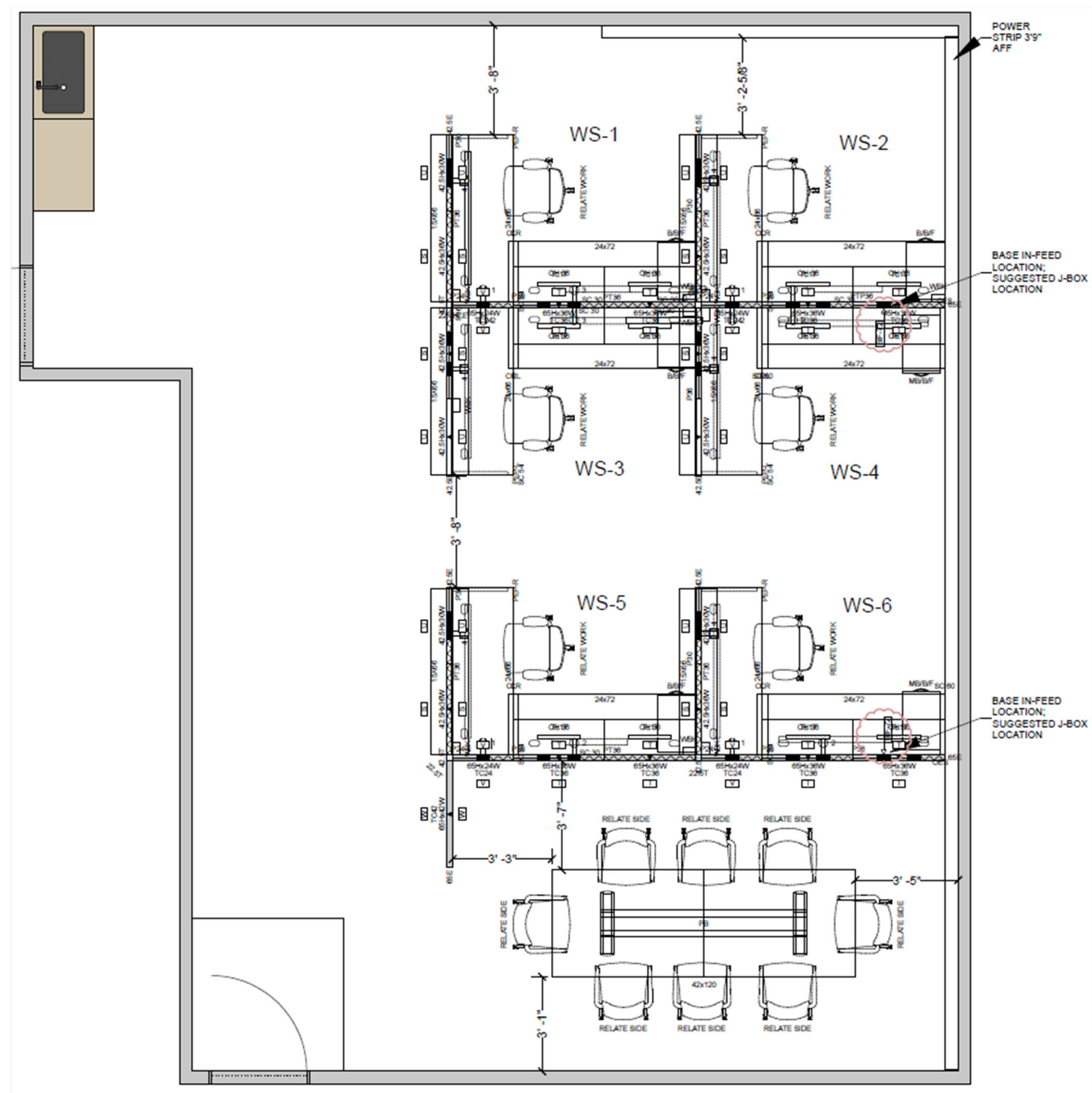
Designer: Brandy Wilson

Account Rep: Debby Cappadona

Account Rep Email: debby@samclar.com

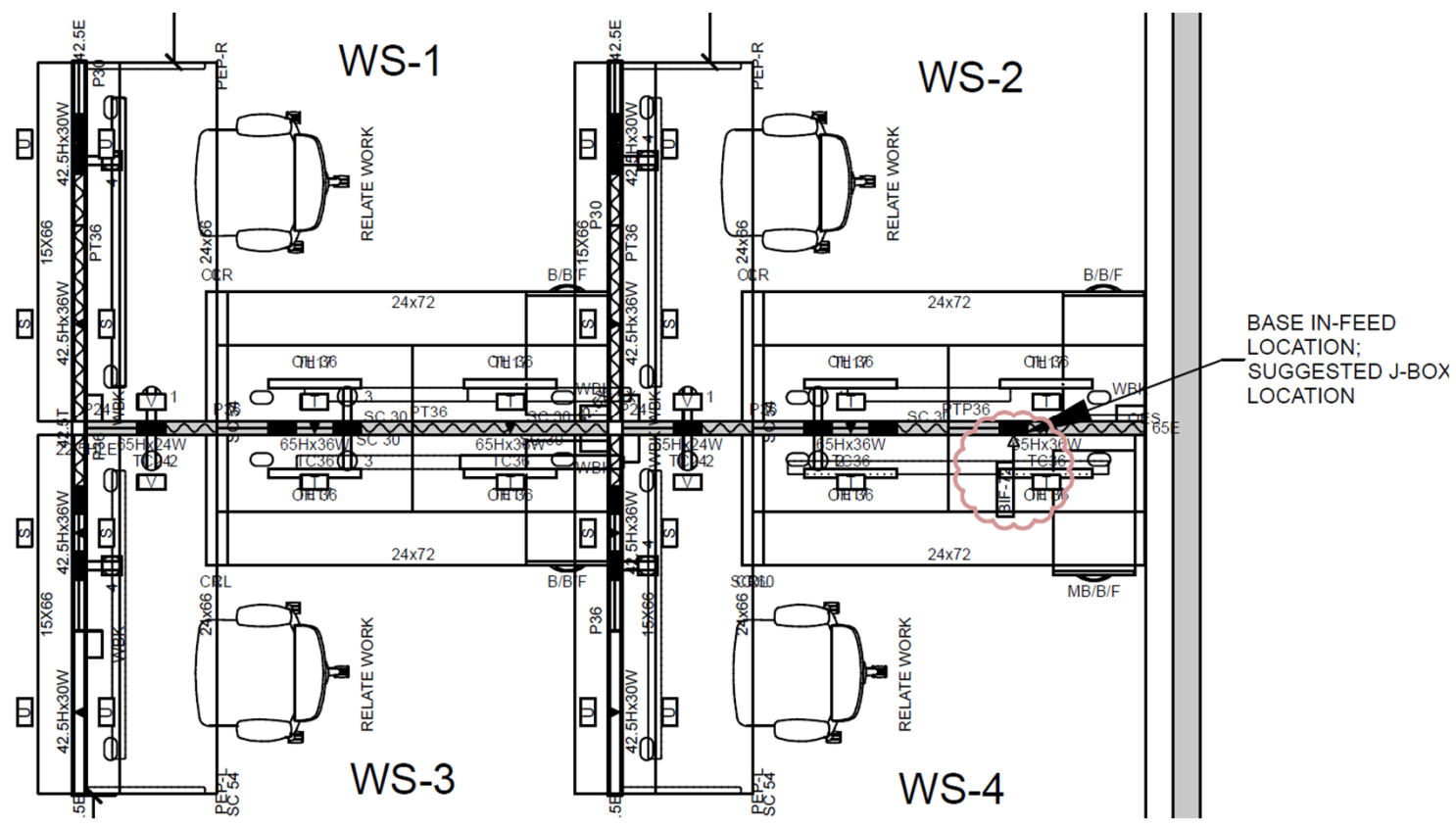
Date: 07-26-2023

OVERALL PLAN





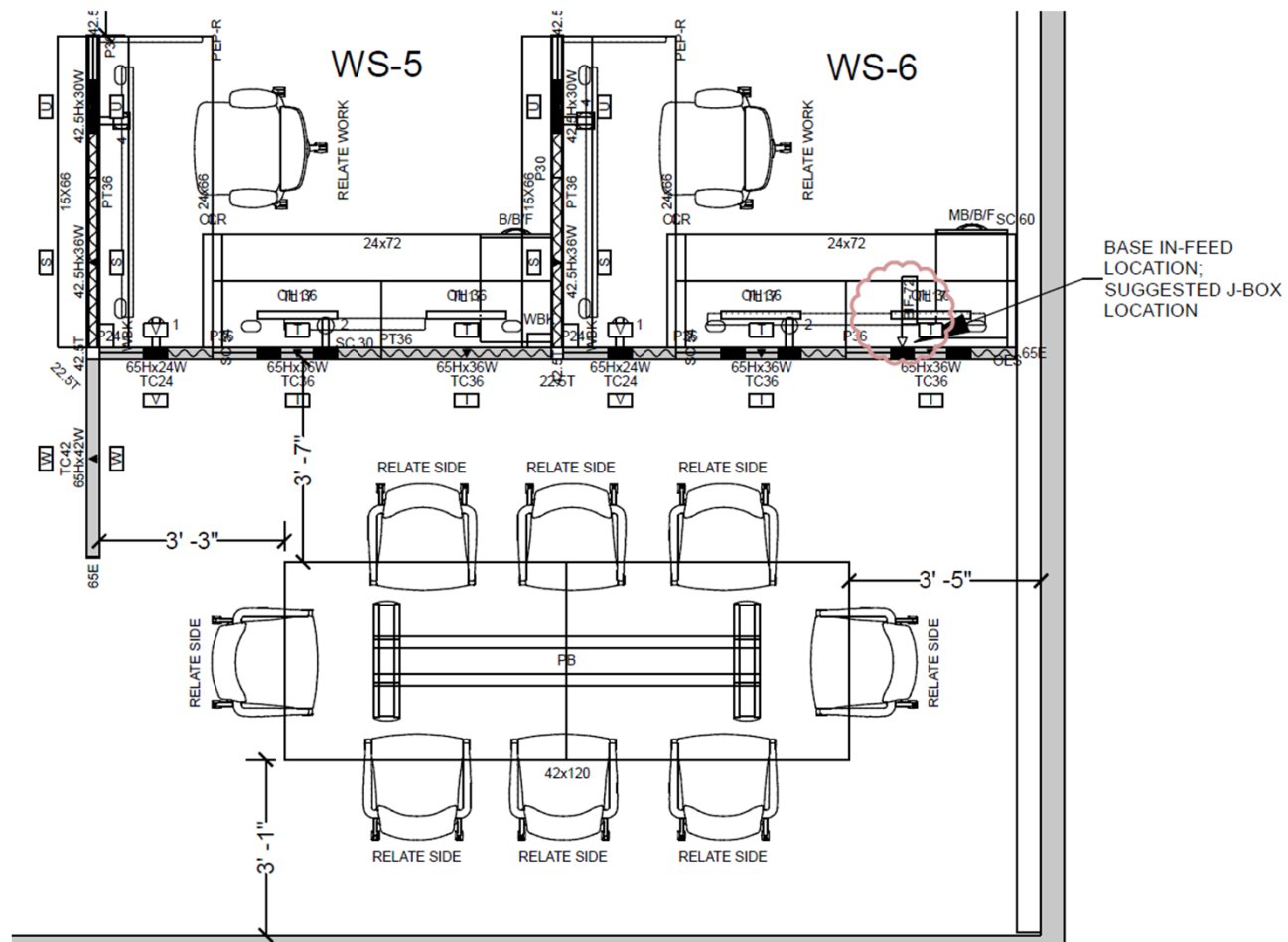
WS 1-4



1. 65”H Fabric Panels along spine with power integrated along the base raceway
2. 42”H Fabric panels with 15”D x 66”W Laminate Transaction Counters between stations and on aisleway
3. 24”D x 66”L Laminate Main Work Surface with plastic grommets (4 qty)
4. 24”D x 72”L Laminate return Work Surface with plastic grommets (4 qty)
5. 36”W Metal Panel-Mounted Overhead Unit with Flipper Door and task lights (8 qty)
6. Metal Box/Box/File Pedestal; Silver Arch Pulls (4 qty)
7. *Task Chairs shown are for visual and not included in pricing*



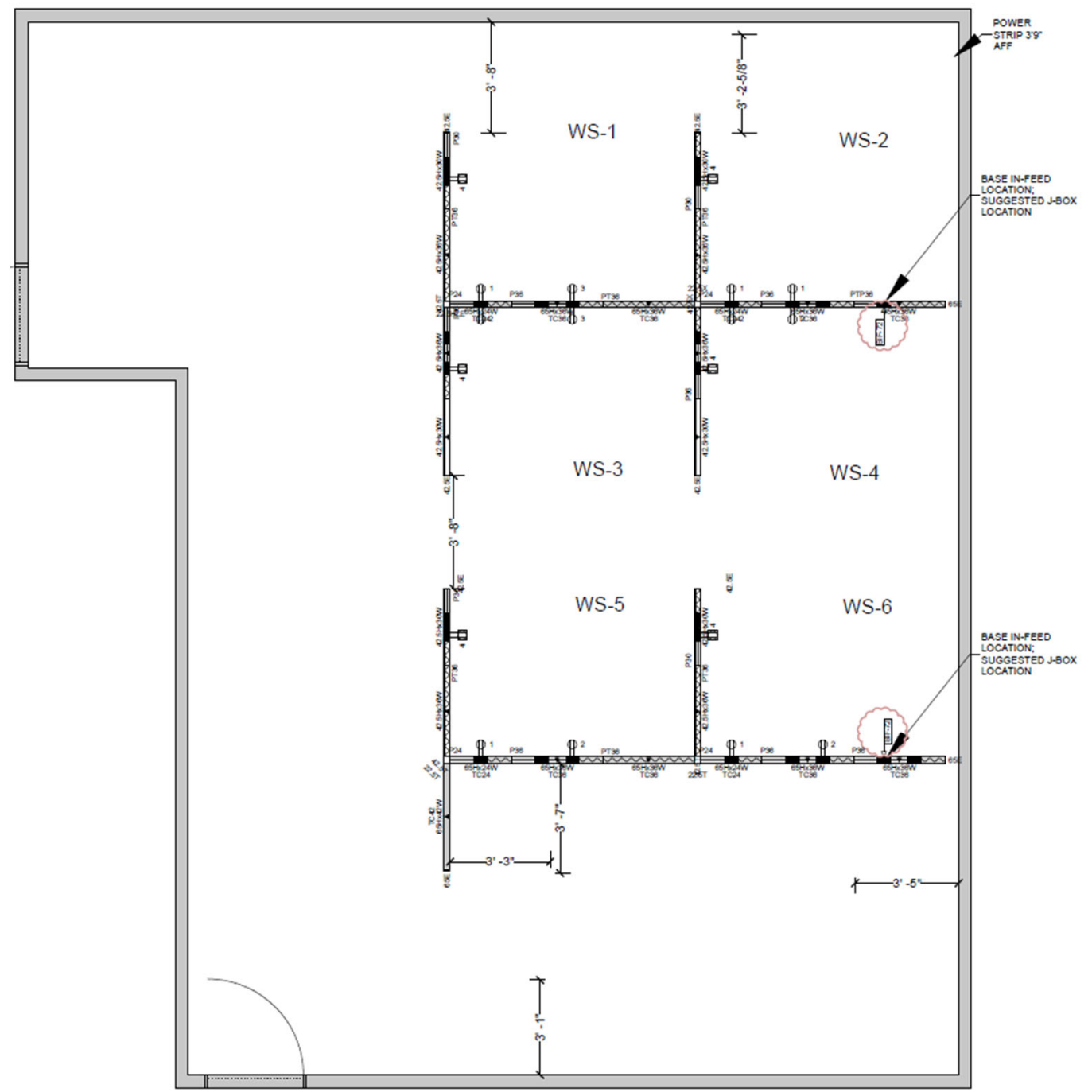
WS 5-6 and Conference



1. 65"H Fabric Panels along spine with power integrated along the base raceway
2. 42"H Fabric panels with 15"D x 66"W Laminate Transaction Counters between stations and on aisleway
3. 24"D x 66"L Laminate Main Work Surface with plastic grommets (2 qty)
4. 24"D x 72"L Laminate return Work Surface with plastic grommets (2 qty)
5. 36"W Metal Panel-Mounted Overhead Unit with Flipper Door and task lights (4 qty)
6. Metal Box/Box/File Pedestal; Silver Arch Pulls (2 qty)
7. 42"D x 120"L Laminate Meeting Table with Laminate Panel Base; Power not included (1 qty)
8. Wit Side Chair with Arms Desert Mesh, Black Frame/Arms (8 qty)
9. *Task Chairs are shown are for visual and not included in pricing*



ELECTRICAL PLAN



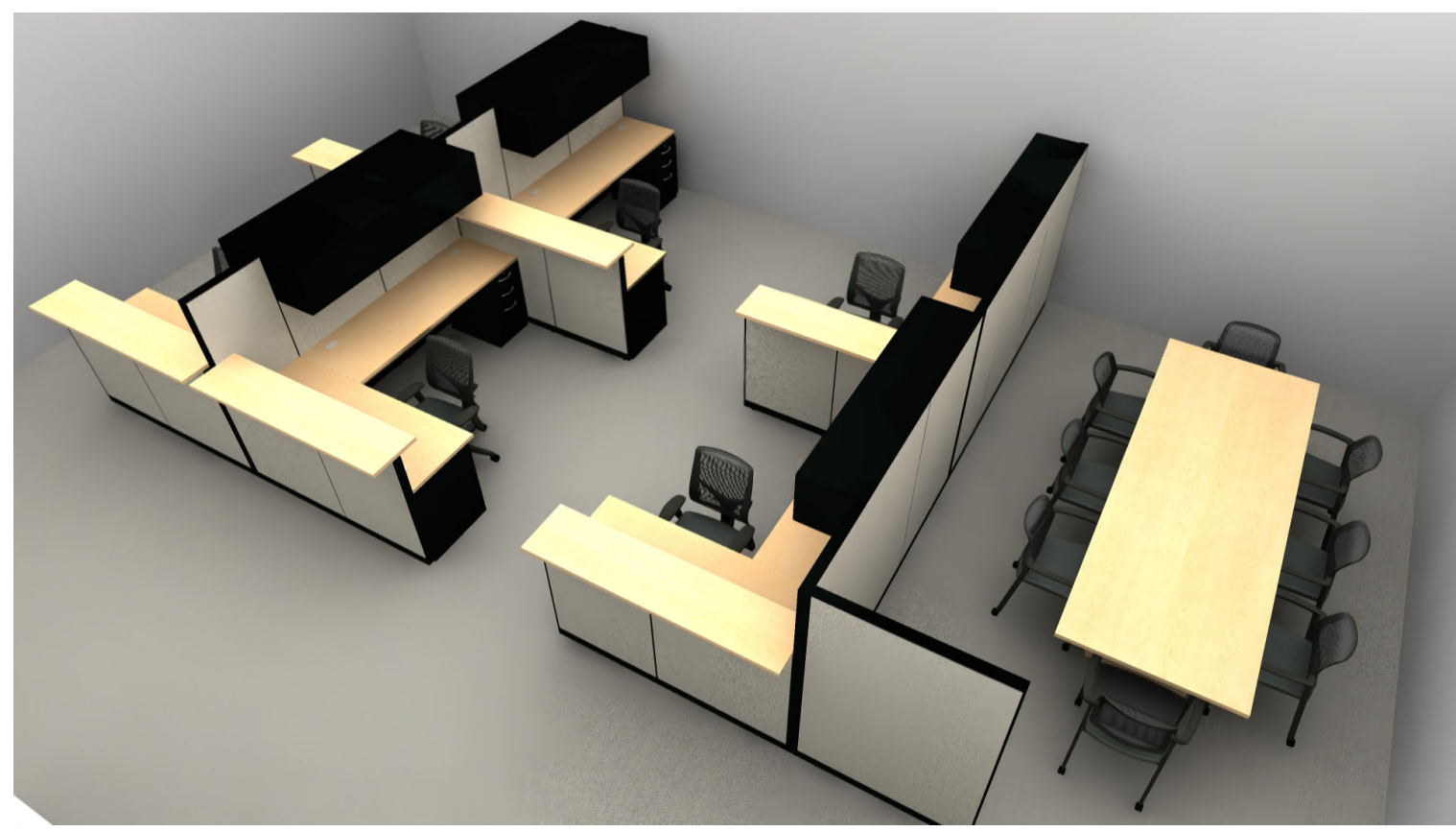
Electrical Description:

3+1/ 8 Circuit wire system is run throughout the panel raceway, with duplexes at the base, where shown.

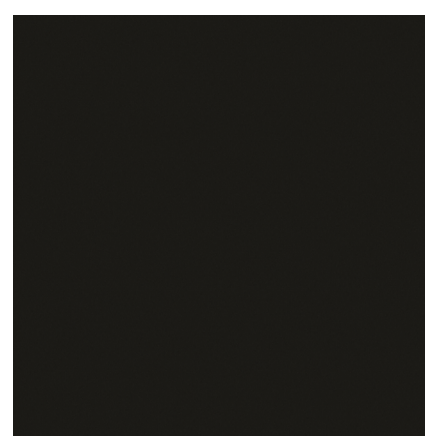
The client is responsible to hire a licensed electrician to connect the panel systems Base In-feed to the building.

The client is responsible to hire a data contractor to run any data cabling through he panel system.

FINISHES



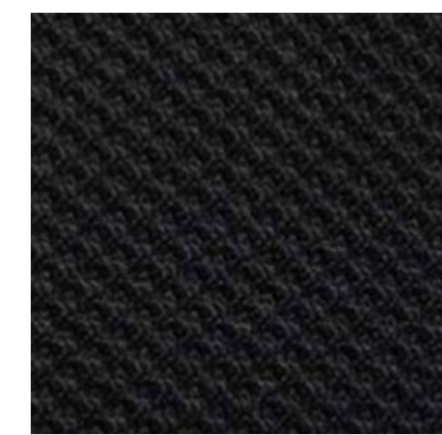
Surface Laminate/ Edge
Natural Maple



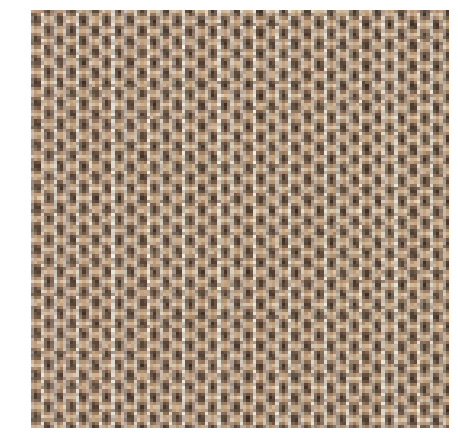
Panel Trim, Supports & Storage Paint
Black P27



Panel Fabric
Tempest/ Zebra TP935



Wit Chair Seat Upholstery
Element Onyx



Wit Chair Mesh: Desert