



▶ **TRUSTEE AREA
SCENARIOS**

MT. DIABLO UNIFIED SCHOOL DISTRICT

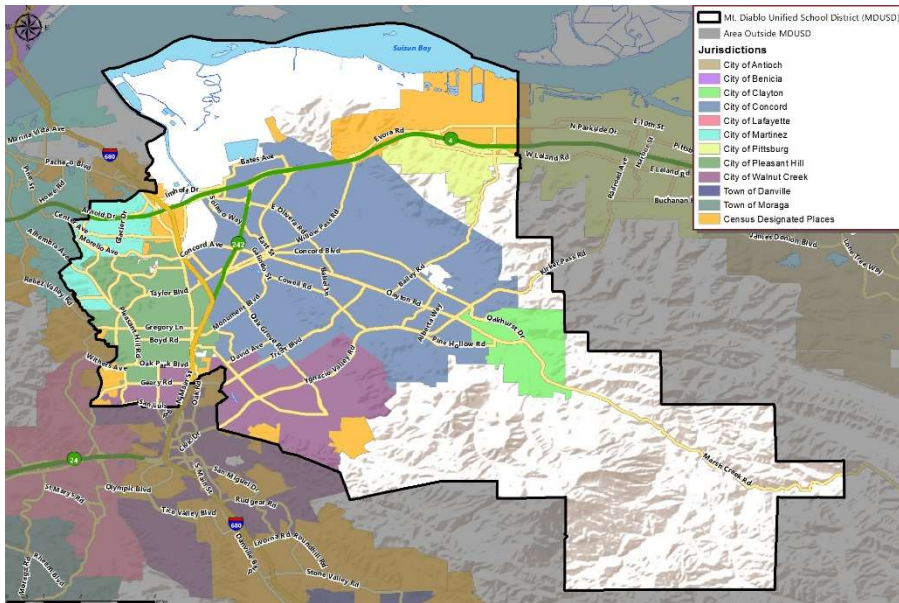
FEBRUARY 23, 2022



▶ DRAFT TIMELINE

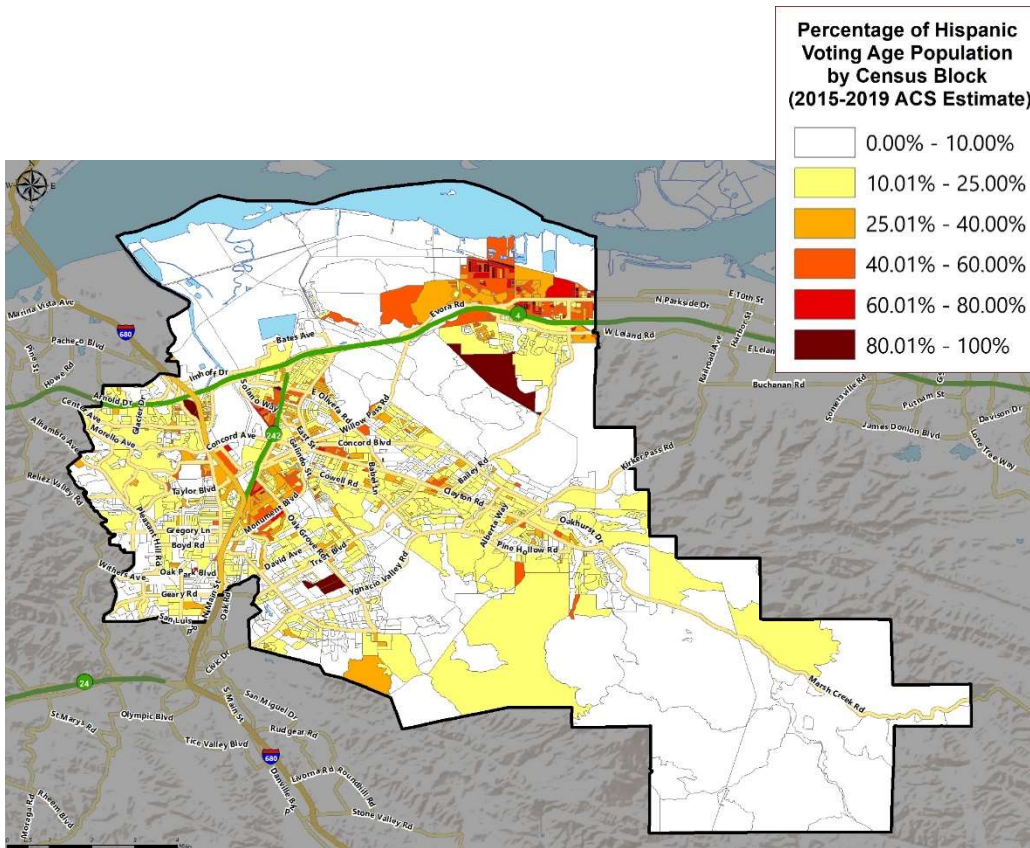
DATE	ACTIVITY
February 9, 2022	Board Meeting: Presentation on Evaluation of Existing Voting Areas Receive Initial Scenarios
February 10 – 21, 2022	Cooperative Strategies prepares potential maps of adjusted Voting Areas
February 23, 2022	Board Meeting: Review Trustee Area Scenarios Adopt Final Trustee Areas
March/April 2022	Cooperative Strategies sends Final Trustee Areas Map to the County Registrars of Voters.

► DISTRICT DEMOGRAPHICS
2020 CENSUS DATA



Population	Total Population		Age 18 and over	
	Total	%	Total	%
Hispanic/Latino	70,283	26.3%	49,874	23.6%
White	123,432	46.2%	104,581	49.5%
Black / African American	10,771	4.0%	8,616	4.1%
American Indian /Alaska Native	591	0.2%	495	0.2%
Asian	42,693	16.0%	35,326	16.7%
Native Hawaiian/ Pacific Islander	1,190	0.4%	949	0.4%
Other	1,804	0.7%	1,281	0.6%
Two or More Races	16,138	6.0%	10,090	4.8%
Total	266,902	100%	211,212	100%

► DISTRICT DEMOGRAPHICS
CITIZEN VOTING AGE POPULATION ESTIMATES



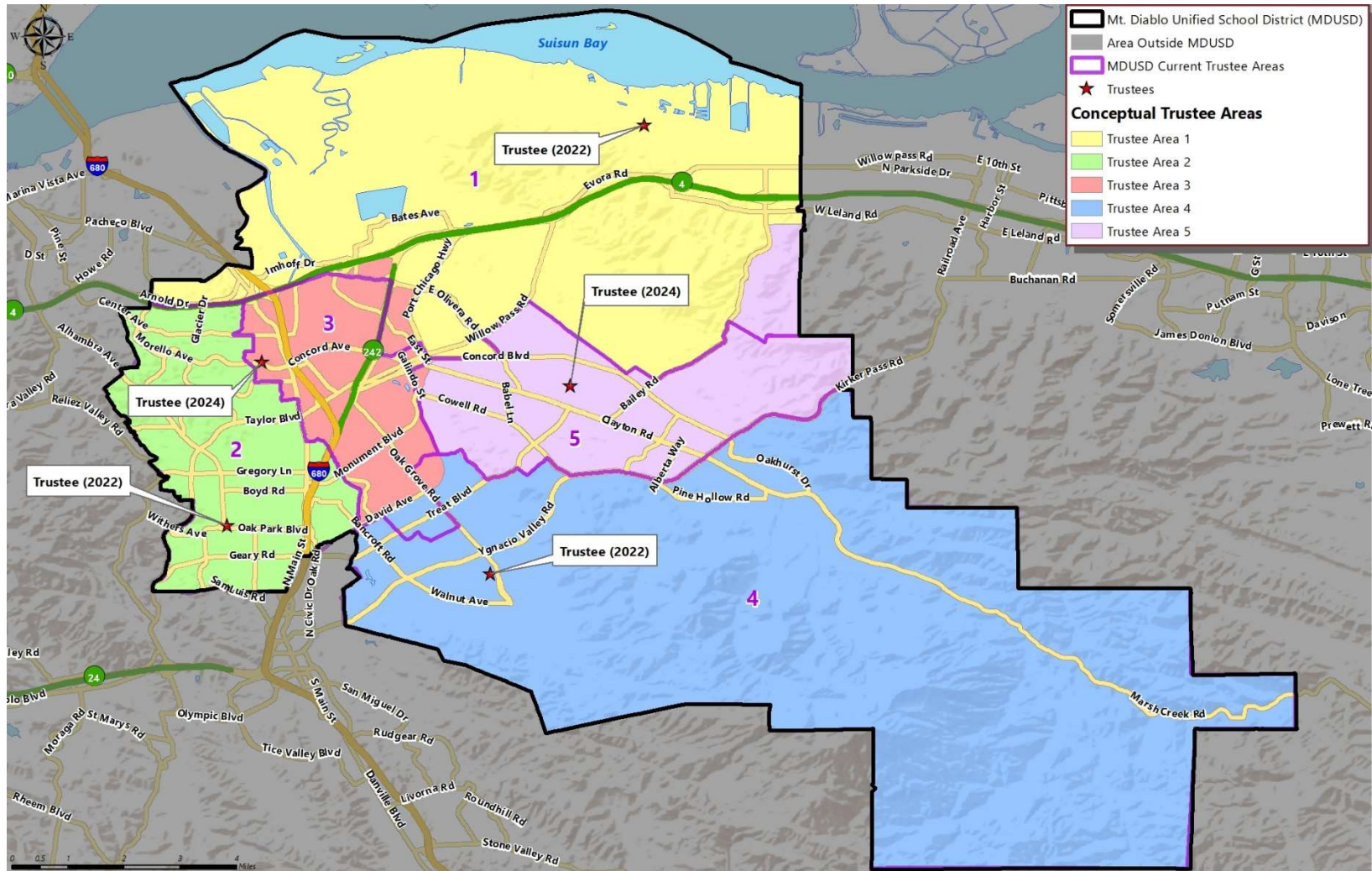
Population	2015-2019 CVAP	
	Total	%
Hispanic/Latino	32,010	17.5%
White	110,717	60.5%
Black / African American	7,907	4.3%
American Indian / Alaska Native	288	0.2%
Asian	24,527	13.4%
Native Hawaiian/ Pacific Islander	608	0.3%
Two or More Races	6,878	3.8%
Total	182,935	100%

▶ **CONCEPTUAL TRUSTEE AREAS**
SCENARIO CONSIDERATIONS

For both Scenarios:

- The first consideration taken into account was balancing the trustee areas so that the total population is closer to the ideal size which is 53,380 people. This in turn would make the variance fall under the 10% limit.
- The second consideration was to stay as close to the current trustee areas as possible, whenever possible. The majority of the population growth was in area 1, so the changes were mostly to Trustee Area 5 and 3.
- The third consideration was trying to keep each trustee in their own trustee area.

▶ CONCEPTUAL TRUSTEE AREAS SCENARIO 1



► **DEMOGRAPHICS**
SCENARIO 1

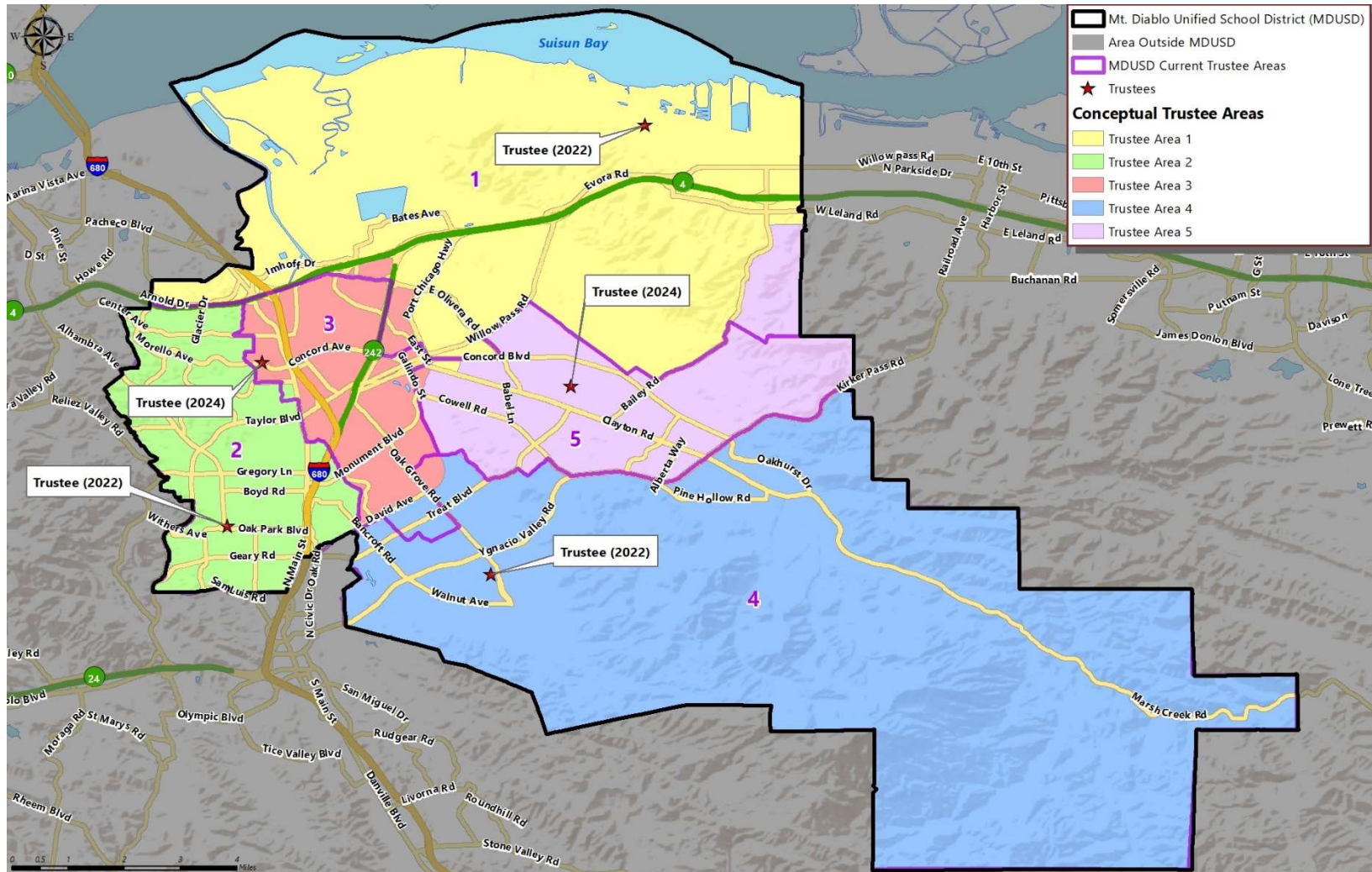
Total Population:	266,902	Ideal Trustee Area Size:	53,380	Variance:	2.0%
--------------------------	----------------	---------------------------------	---------------	------------------	-------------

TRUSTEE AREA	Trustee Area 1		Trustee Area 2		Trustee Area 3		Trustee Area 4		Trustee Area 5	
TP* vs. CVAP**	TP	CVAP	TP	CVAP	TP	CVAP	TP	CVAP	TP	CVAP
Population	53,183	31,327	52,848	39,545	53,731	30,012	53,221	41,964	53,919	40,087
Population Variance	-0.4%	N/A	-1.0%	N/A	0.7%	N/A	-0.3%	N/A	1.0%	N/A
Hispanic/Latino	40.7%	27.9%	14.1%	11.4%	42.7%	26.5%	11.6%	10.0%	22.4%	16.4%
White	24.3%	38.0%	61.8%	71.7%	31.2%	48.5%	63.4%	71.5%	50.7%	64.5%
Black/African American	8.1%	9.2%	2.3%	2.5%	4.6%	5.7%	1.8%	2.3%	3.4%	3.4%
American Indian/Alaska Native	0.3%	0.3%	0.2%	0.0%	0.2%	0.2%	0.1%	0.1%	0.3%	0.2%
Asian	20.3%	19.8%	13.9%	9.9%	14.9%	14.9%	15.3%	12.4%	15.5%	11.8%
Native Hawaiian/Other Pacific Islander	0.8%	0.6%	0.2%	0.4%	0.6%	0.4%	0.2%	0.4%	0.3%	0.0%
Other	0.6%	N/A	0.7%	N/A	0.8%	N/A	0.6%	N/A	0.7%	N/A
Two or More Races	4.8%	4.1%	6.8%	4.1%	5.0%	3.8%	6.9%	3.3%	6.7%	3.6%

*Total Population; Source: Redistricting Database for California, Published by Statewide Database on September 20, 2021

**Citizen Voting Age Population (CVAP); Source: American Community Survey, 2015-2019 Data

▶ CONCEPTUAL TRUSTEE AREAS SCENARIO 2



► **DEMOGRAPHICS**
SCENARIO 2

Total Population:	266,902	Ideal Trustee Area Size:	53,380	Variance:	1.3%
--------------------------	----------------	---------------------------------	---------------	------------------	-------------

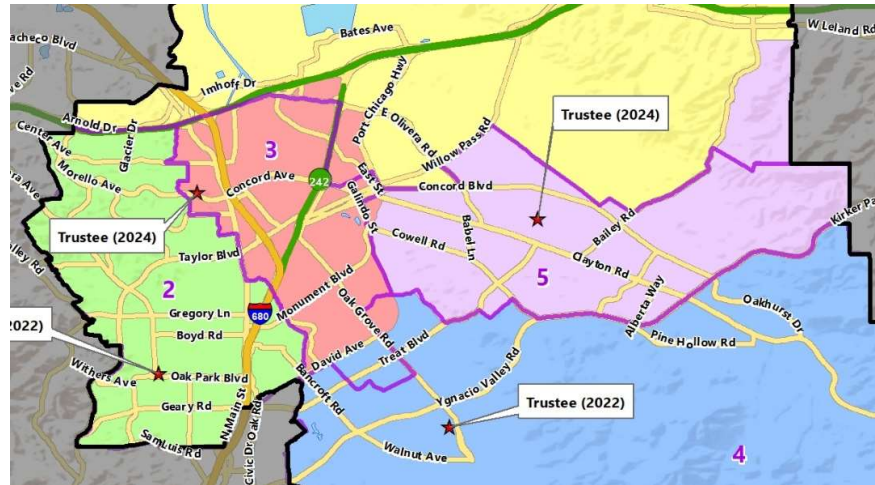
TRUSTEE AREA	Trustee Area 1		Trustee Area 2		Trustee Area 3		Trustee Area 4		Trustee Area 5	
TP* vs. CVAP**	TP	CVAP	TP	CVAP	TP	CVAP	TP	CVAP	TP	CVAP
Population	53,894	31,977	53,345	39,848	53,234	29,709	53,221	41,964	53,208	39,437
Population Variance	1.0%	N/A	-0.1%	N/A	-0.3%	N/A	-0.3%	N/A	-0.3%	N/A
Hispanic/Latino	40.5%	28.3%	14.1%	11.7%	42.9%	26.3%	11.6%	10.0%	22.4%	15.9%
White	24.4%	37.8%	61.7%	71.5%	31.0%	48.5%	63.4%	71.5%	50.9%	65.2%
Black/African American	8.1%	9.2%	2.3%	2.5%	4.6%	5.7%	1.8%	2.3%	3.4%	3.3%
American Indian/Alaska Native	0.3%	0.3%	0.2%	0.0%	0.2%	0.2%	0.1%	0.1%	0.3%	0.2%
Asian	20.4%	19.7%	14.0%	9.8%	14.9%	15.0%	15.3%	12.4%	15.4%	11.7%
Native Hawaiian/Other Pacific Islander	0.8%	0.6%	0.2%	0.4%	0.6%	0.4%	0.2%	0.4%	0.3%	0.0%
Other	0.6%	N/A	0.7%	N/A	0.8%	N/A	0.6%	N/A	0.7%	N/A
Two or More Races	4.9%	4.0%	6.8%	4.1%	4.9%	3.9%	6.9%	3.3%	6.7%	3.7%

*Total Population; Source: Redistricting Database for California, Published by Statewide Database on September 20, 2021

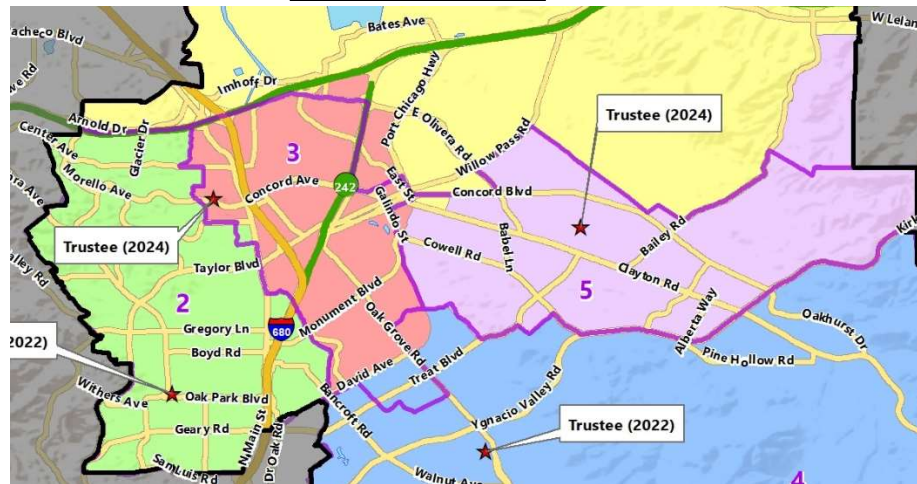
**Citizen Voting Age Population (CVAP); Source: American Community Survey, 2015-2019 Data

▶ CONCEPTUAL TRUSTEE AREAS - COMPARISON

Scenario 1



Scenario 2





QUESTIONS