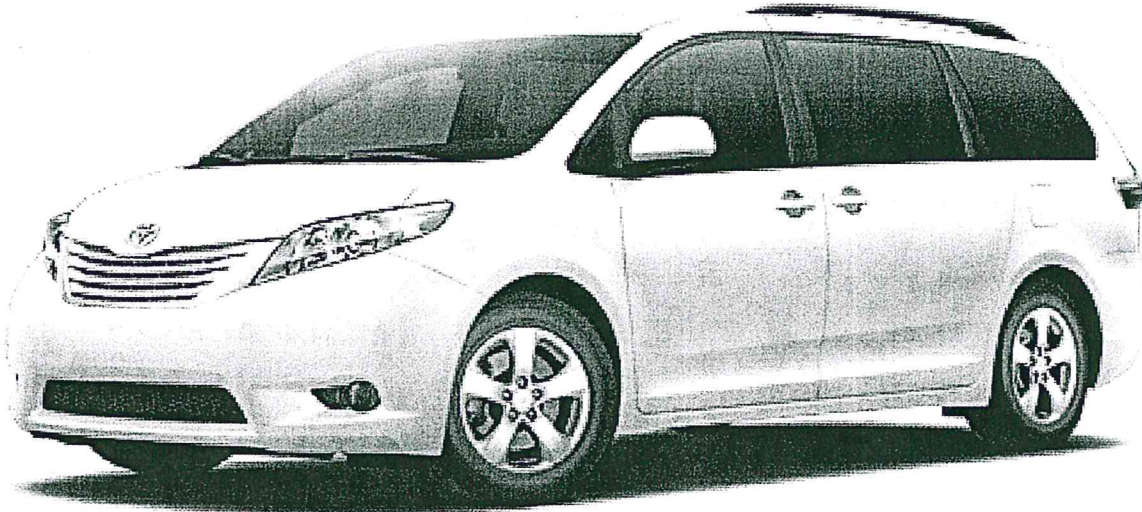


TOYOTA

2017 SIENNA LE 3.5L FWD 8 PSGR



Model: 5338A
Year: 2017
Interior Color: ASH
Exterior Color: SUPER WHITE
Number of Cylinders: 6

Standard Equipment

MECHANICAL & PERFORMANCE

3.5L V6 DOHC 24-valve D-4S Injection
with Dual VVT-i
Direct Shift 8-Speed Automatic
Transmission with Intelligence (ECT-i)
17" Alloy Wheels with P235/60R17 Tires

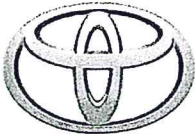
SAFETY & CONVENIENCE

Star Safety System: Enhanced Vehicle

Stability Control, Traction Control,
Anti-Lock Brake System, Electronic
Brake-Force Distribution, Brake Assist
& Smart Stop Technology
Driver & Fr Passenger Active Headrests
Advanced Airbag System:
Driver & Front Passenger Seat-Mounted
Side, Driver Knee, Front Passenger Seat

* 2017 Manufacturer's Suggested Retail Price, excludes the Delivery, Processing and Handling Fee, taxes, license, title and available or regionally required equipment. Actual Dealer price may vary. Pricing, specifications, standard features and available equipment are based on information available when this page was produced and subject to change without notice.

Disclaimer: This document is only representative of some of the information contained on an actual window sticker, and is not meant to replace or substitute for the actual window sticker on the vehicle. Please see your retailer for further information.



TOYOTA

2017 SIENNA LE 3.5L FWD 8 PSGR

Cushion & 3-row Side Curtain Airbags

4 LATCH (Lower Anchor & Tethers for Children) locations: 2 in 2nd row and 2 in 3rd row

EXTERIOR

Projector-Beam Headlights w/Auto On/Off

Dual Power Sliding Side Doors

Daytime Running Lights

Color-Keyed Power Outside Mirrors with Integrated Blind Spot Mirrors

INTERIOR

Easy Clean Fabric 8-Way Power Driver's Seat with Power Lumbar, 4-Way Front

Optional Equipment

50 State Emissions

All Weather Floor Liners/Door Sill

Preferred Owner's Portfolio

Passenger Seat

Removable Easy Clean 2nd Row Captain's Chairs with Stowable Center Seat with

Tip Up and Long Slide

60/40 Split and Stow 3rd Row Seat with One-Motion Stow

3-Zone Automatic Climate Control:

Driver, Passenger and Rear Zones

7" Hi-Res Touch-Screen, AM/FM/CD/USB/AUX, Bluetooth, SXM All Access 3-mo Trial, HD

Radio & Integrated Backup Camera Display

Scout GPS Link App

3.5" LCD Multi-Info Display Screen

Toyota Walnut Creek

2100 N. Broadway
Walnut Creek, CA. 94517
925-933-7440

Hello Joanie,

As the Fleet Manager here, I'll be handling the transaction for the Sienna you've requested, should we be fortunate enough to be awarded the deal.

Referencing Mt. Diablo USD LVAC
2017 Toyota Sienna LE FWD 8 Passenger

Standard equipment plus carpeted floor mats/door sill protector

MSRP 33810.00
30995.00 Selling price
80.00 Documentary prep fee
2719.06 sales tax @ 8.75 %
302.00 DMV License
29.00 Electronic registration fee
8.75 CA tire fee

34133.81 Subtotal
- 1500.00 Factory Rebate

32633.81 Total

Offer good through 2/28/2017
Thank you for your consideration.

Regards,



Joe Goostree
Fleet Manager
925-997-7456 Direct
toyotafleetmgr@aol.com

JOANIE PETERSON

From: Piombo, Lisa L. <Lisa.Piombo@concordtoyota.com>
Sent: Wednesday, February 01, 2017 12:26 PM
To: JOANIE PETERSON
Subject: RE: Quote for 2017 Sienna LE Van

The Cash Rebate went DOWN to \$1500

Price \$31,252.49
Lic \$421.75
Tax \$2741.29
Total \$34,415.83
<\$1500> Cash Rebate (good until Feb 28th)
\$32,915.83 TOTAL DUE FOR DELIVERY

Lisa Piombo
Fleet Manager
Concord Toyota
lisa.piombo@concordtoyota.com
(925)349-2296 – Office
(925)876-2018 – Mobile
(925)609-7613 – Fax

-----Original Message-----

From: JOANIE PETERSON [<mailto:peteronj@mdusd.org>]
Sent: Tuesday, January 31, 2017 1:53 PM
To: Piombo, Lisa L. <Lisa.Piombo@concordtoyota.com>
Subject: RE: Quote for 2017 Sienna LE Van

Great, thanks Lisa!

-----Original Message-----

From: Piombo, Lisa L. [<mailto:Lisa.Piombo@concordtoyota.com>]
Sent: Tuesday, January 31, 2017 1:14 PM
To: JOANIE PETERSON
Subject: RE: Quote for 2017 Sienna LE Van

Hi Joanie,

Yes I will send one over tomorrow.

Lisa Piombo
Fleet Manager
Concord Toyota

FREEWAY TOYOTA



1835 Glendale Ave
Hanford, CA. 93230

MDUSD
1266 San Carlos Ave
Concord, CA. 94518
Attn: Joanie Peterson

1/06/2017

As per your request for CA State Contract #1-16-23-23C Line Item #13

2017 Toyota Sienna (5328)	\$28178.00
Upgrade to 8 passenger (5338)	\$ 3069.00
2T – All Weather Floor Liners	\$ 179.00
8.75% Contra Costa County Tax	\$ 2749.78
CA Tire Tax	\$ 8.75
Delivery to Concord	<u>\$ 300.00</u>
Total per Unit	\$34484.53 each

Note: You can earn a \$500.00 discount per unit if pay your invoice with-in 20 days after your vehicle is delivered.

Protect against future mechanical or electrical issue's with Toyota Platinum Extra Care \$0 Deductible
5 Years / 100,000 Miles \$930.00
6 Years / 100,000 Miles \$1150.00
7 Years / 125,000 Miles \$1645.00

Thank you for the opportunity to earn your business.
Patrick G Ireland
Government Fleet Manager