

PROJECT INFORMATION

Date	#	Original REQ Number	Designer
11/18/2024	0	REQ-00214704	VHK

Revisions:

3/20/2025	4	REQ-00260185	VHK
-----------	---	--------------	-----

GENERAL SPECIFICATION

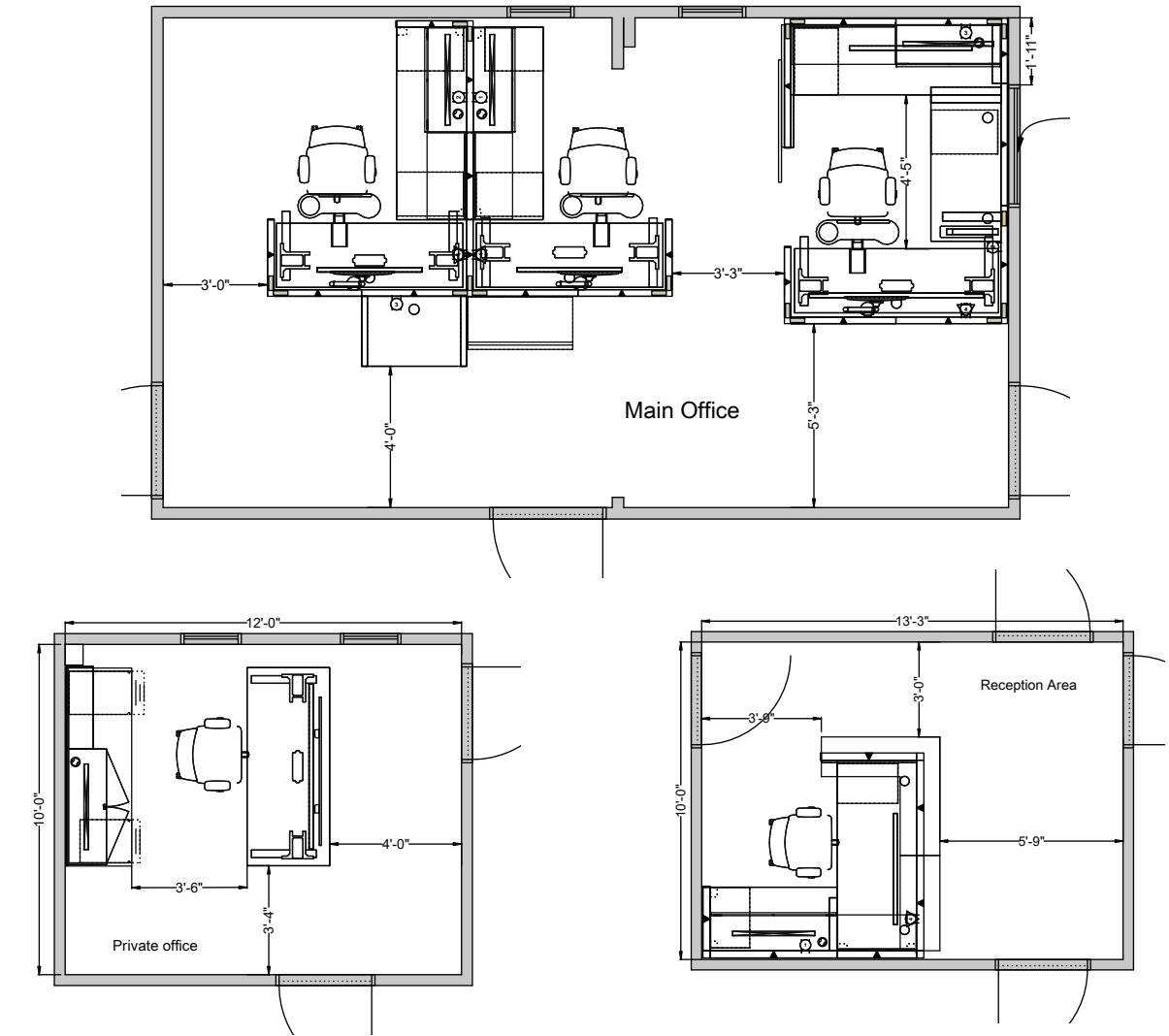
Dealer responsible for verifying all fabrics and finishes prior to order.

Product Series Specified:

- Accelerate
- Abound
- System worksurface & overheads
- Co Ordinate
- 10500 Series
- Ignition 2.0

Finishes Specified:

- Laminate: Grade 1 - Kingswood walnut and Designer white
- Paint: Garde 1 - Designer white
- Panel Fabric: Grade 1 Nobel Gunmetal
- Seating Fabric: Garde 1 Black



PROJECT NOTES

Attention:

- Quote 1
- 3 x Accelerate Cubicles L shape 5' x 7' , co ordinate HAT desks with fixed return tops 60" x 24" and each cubicles will Flo monitor arm, Overhead flipper, shelf, Keyboard tray, Support BBF & FF Pedestals
 - Each cubicle will have a 1 dedicated and 1 utility duplex receptacles and 1 utility for small table.
 - 2 Base infeed at return panel window wall side
 - Electrical circuit type 4 (3+1)

- Quote 2
- 3 x Accelerate cubicles same as Quote 1
 - Private office : 10500 series L shape desk with BBF & FF Support pedestal
 - Reception desk : 10500 Series L shape Desk with Counter top, Support pedestals BBF and FF.
 - Conference table :- Preside table with flip cutout and 3AC/2USB module
 - added Ignition 2.0 task chairs for cubicles and office's
 - Cliq chairs for conference table

Revision Notes:

- Revision #3
- Workstations and private front desks are Sit stand.
 - Requested corner counter, over heads and outside laminate tiles hence we switched Reception counter to Abound.
 - Private office redesigned with sit stand desk and back fixed desk with wall mounting Overhead, shelf & tackable board.
 - All over heads will have LED lights.
 - verify the electricals and base infeed location prior to order

- Revision #4
- Only Quote 2 .
 - Increased return size on U shaped cabin.
 - Added sliding door.

General Information:

- All product sizes, finishes, and dot options must be verified in the Bill of Materials prior to order.
- This project has an accompanying BOM in PDF and SIF format.



PROJECT INFO

REQ-00260185.cmdrw

EQUIPMENT COMPANY -

Mt. Diablo

DESIGNER:

Kirana VH

EMAIL:

integrateddesign@honcompany.com

DATE:

3/20/2025

NOTE: The customer is ultimately responsible for the accuracy and correctness of component counts and measurements. The customer is also responsible for the space planning and all design work of projects. Customer shall verify and confirm all site conditions, dimensions, and suitability of products and applications consistent with published guidelines and applicable codes. Liability of The HON Company shall be limited to the amount charged for the Specification Services rendered and in no event shall The HON Company be responsible for any consequential or incidental damages.



PROJECT INFO

REQ-00260185.cmdrw

SIERRA SCHOOL EQUIPMENT
COMPANY - BAKERSFIELD

Mt. Diablo

DESIGNER:

Kirana VH

EMAIL:

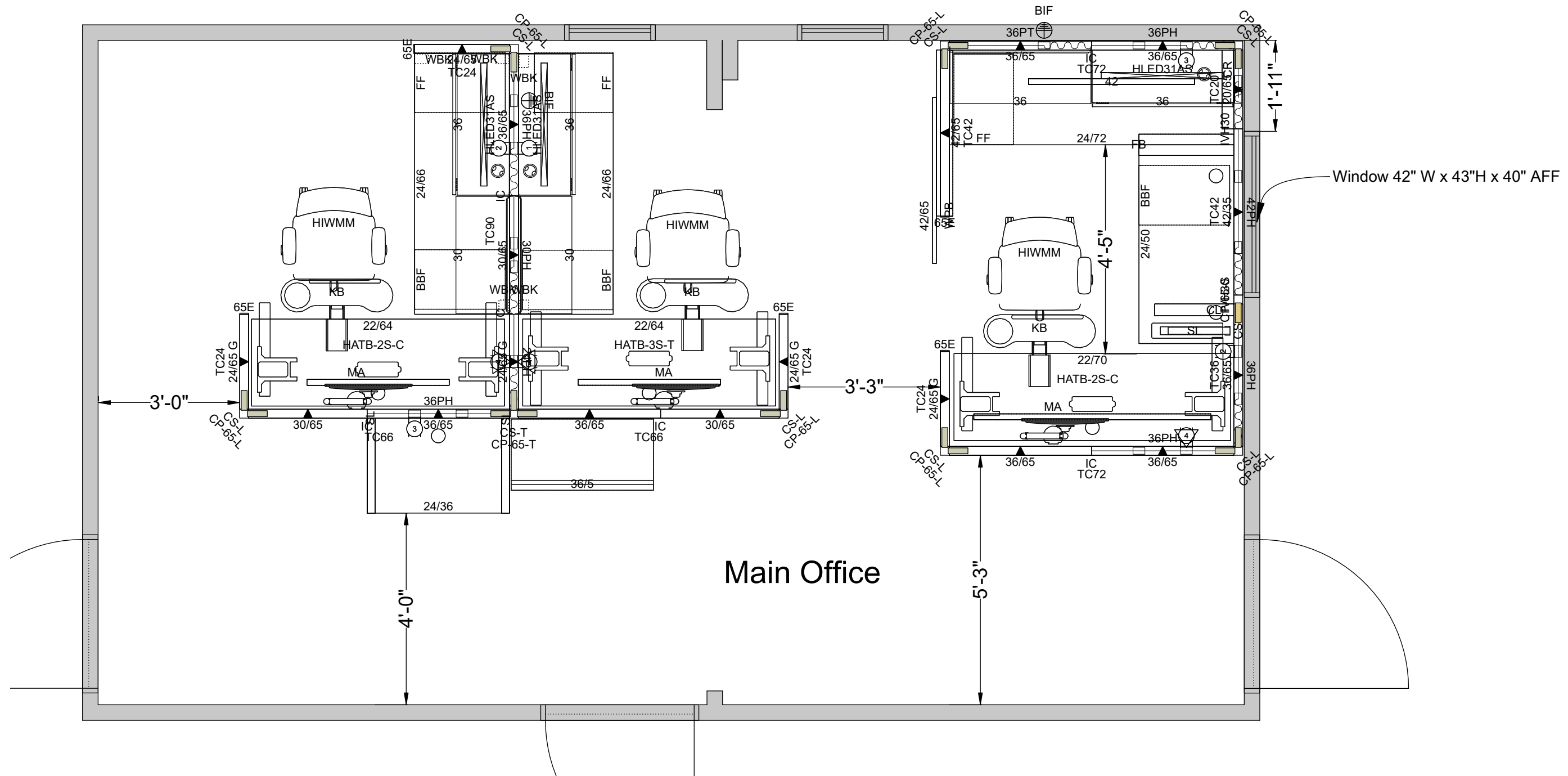
HONIntegratedDesign@honcompany.com

DATE:

3/20/2025

NOTE: The customer is ultimately responsible for the accuracy and correctness of component counts and measurements. The customer is also responsible for the space planning and all design work of projects. Customer shall verify and confirm all site conditions, dimensions, and suitability of products and applications consistent with published guidelines and applicable codes.

Liability of The HON Company shall be limited to the amount charged for the Specification Services rendered and in no event shall The HON Company be responsible for any consequential or incidental damages.



PROJECT INFO

REQ-00260185.cmdrw
SIERRA SCHOOL EQUIPMENT
COMPANY - BAKERSFIELD

Mt. Diablo

DESIGNER:

Kirana VH

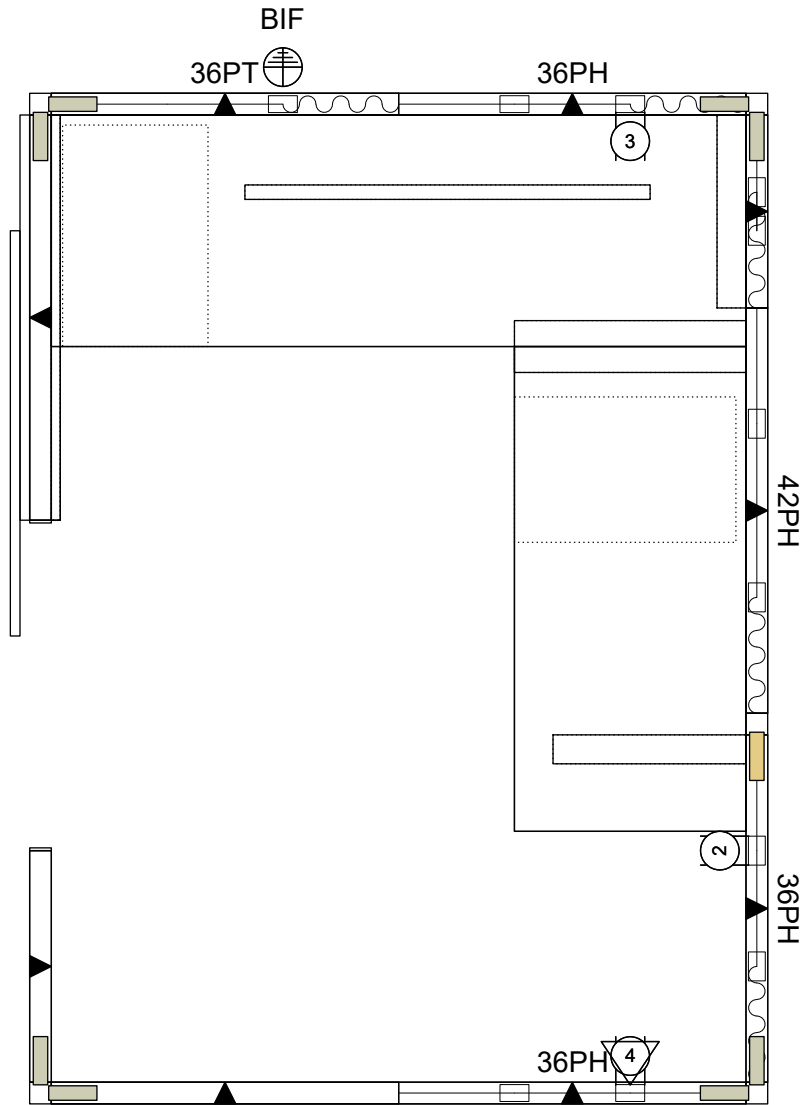
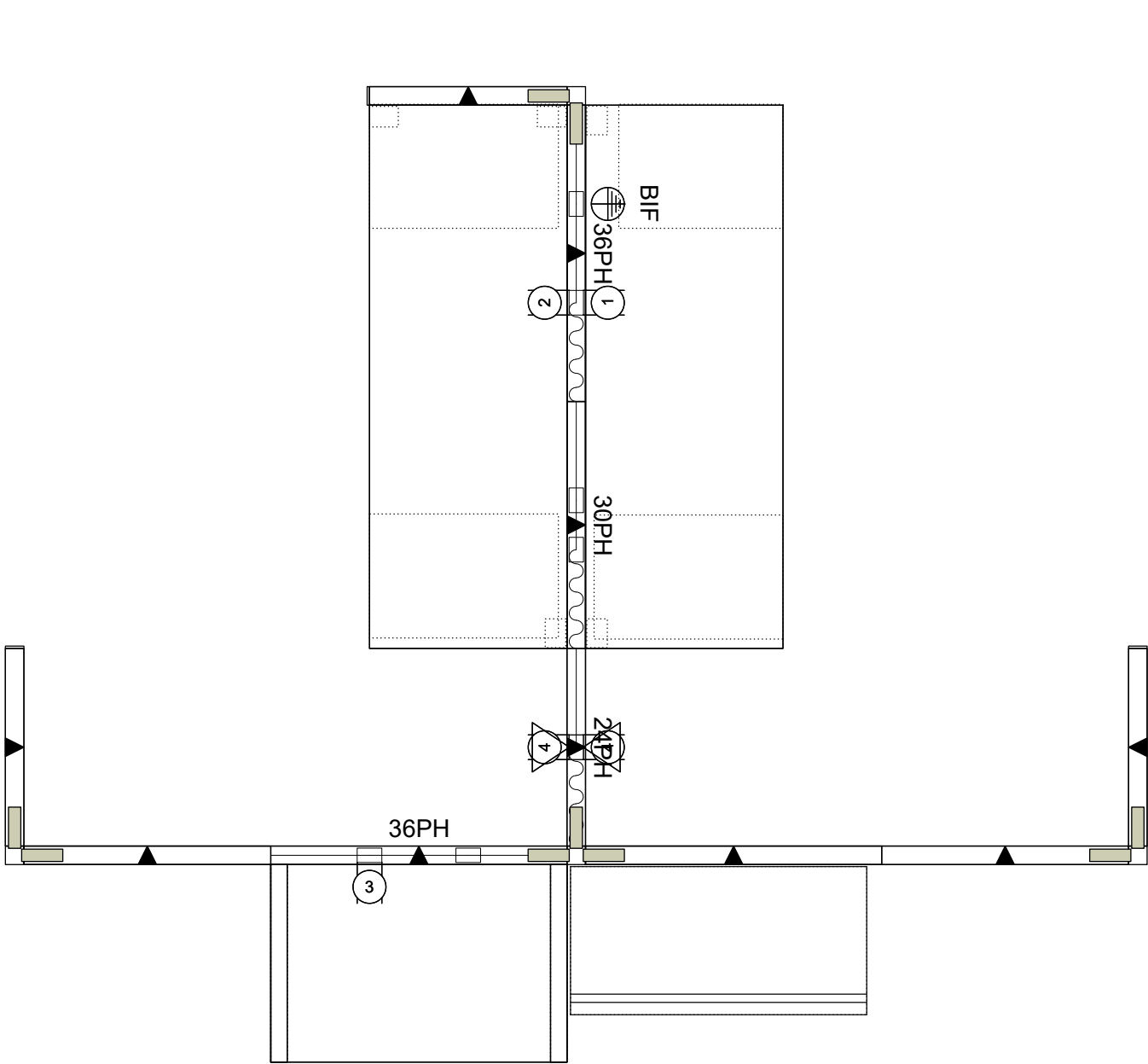
EMAIL:

HONIntegratedDesign@honcompany.com

DATE:

3/20/2025

NOTE: The customer is ultimately responsible for the accuracy and correctness of component counts and measurements. The customer is also responsible for the space planning and all design work of projects. Customer shall verify and confirm all site conditions, dimensions, and suitability of products and applications consistent with published guidelines and applicable codes. Liability of The HON Company shall be limited to the amount charged for the Specification Services rendered and in no event shall The HON Company be responsible for any consequential or incidental damages.



PROJECT INFO

REQ-00260185.cmdrw
SIERRA SCHOOL EQUIPMENT
COMPANY - BAKERSFIELD

Mt. Diablo

DESIGNER:

Kirana VH

EMAIL:

HONIntegratedDesign@honcompany.com

DATE:

3/20/2025

NOTE: The customer is ultimately responsible for the accuracy and correctness of component counts and measurements. The customer is also responsible for the space planning and all design work of projects. Customer shall verify and confirm all site conditions, dimensions, and suitability of products and applications consistent with published guidelines and applicable codes. Liability of The HON Company shall be limited to the amount charged for the Specification Services rendered and in no event shall The HON Company be responsible for any consequential or incidental damages.



PROJECT INFO

REQ-00260185.cmdrw
SIERRA SCHOOL EQUIPMENT
COMPANY - BAKERSFIELD

Mt. Diablo

DESIGNER:

Kirana VH

EMAIL:

HONIntegratedDesign@honcompany.com

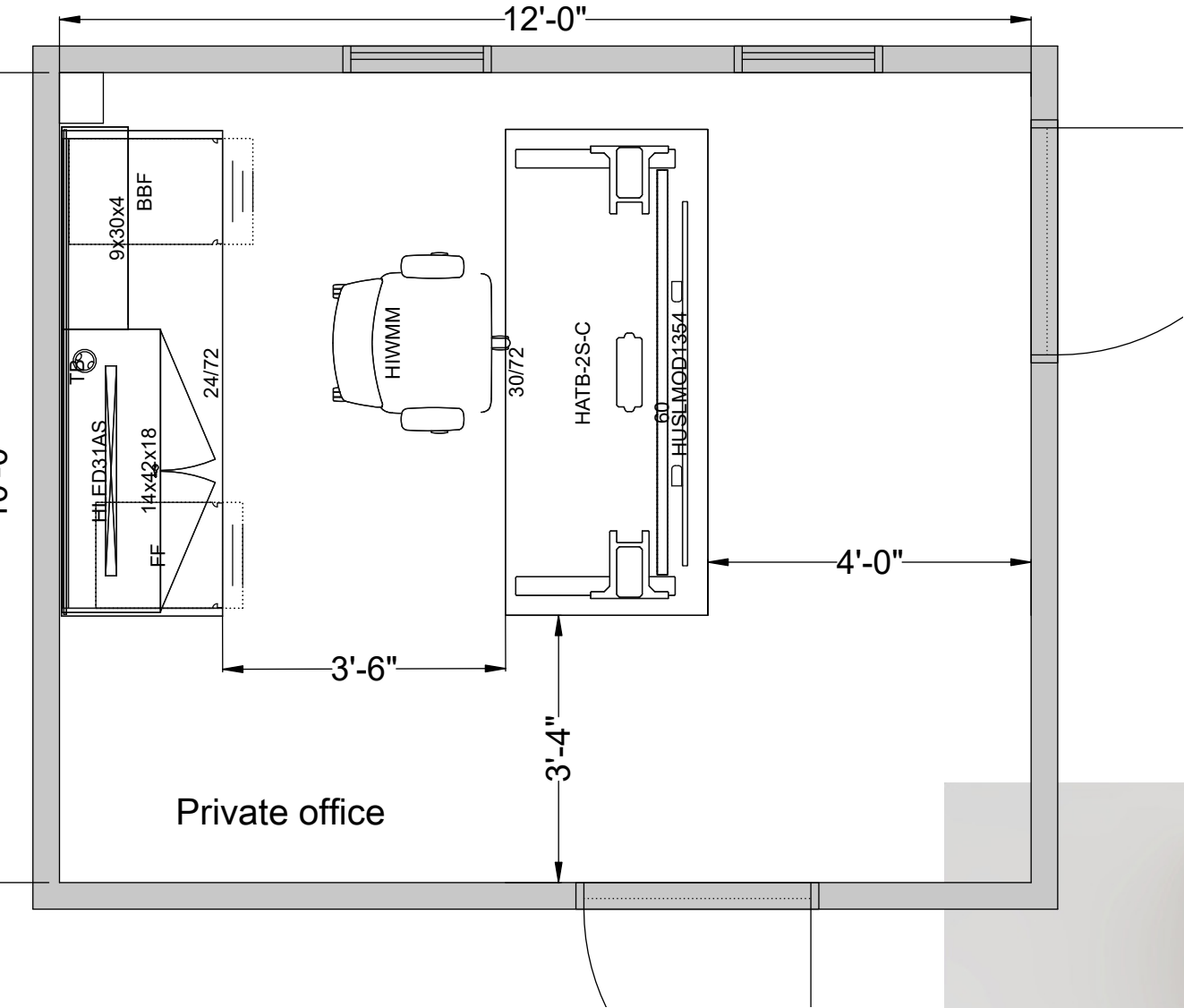
DATE:

3/20/2025

NOTE: The customer is ultimately responsible for the accuracy and correctness of component counts and measurements. The customer is also responsible for the space planning and all design work of projects. Customer shall verify and confirm all site conditions, dimensions, and suitability of products and applications consistent with published guidelines and applicable codes. Liability of The HON Company shall be limited to the amount charged for the Specification Services rendered and in no event shall The HON Company be responsible for any consequential or incidental damages.



Private Office



PROJECT INFO

REQ-00260185.cmdrw

SIERRA SCHOOL EQUIPMENT
COMPANY - BAKERSFIELD

Mt. Diablo

DESIGNER:

Kirana VH

EMAIL:

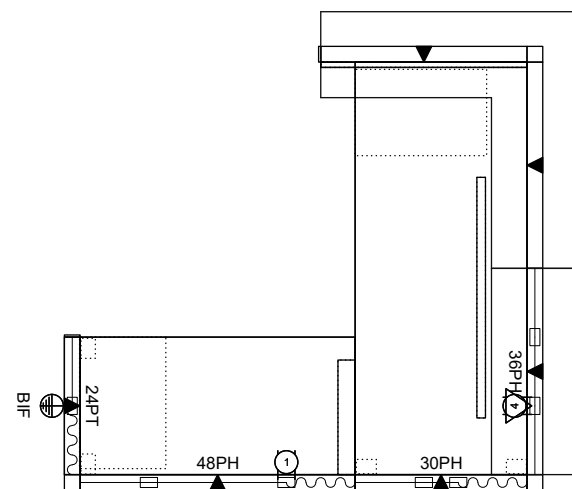
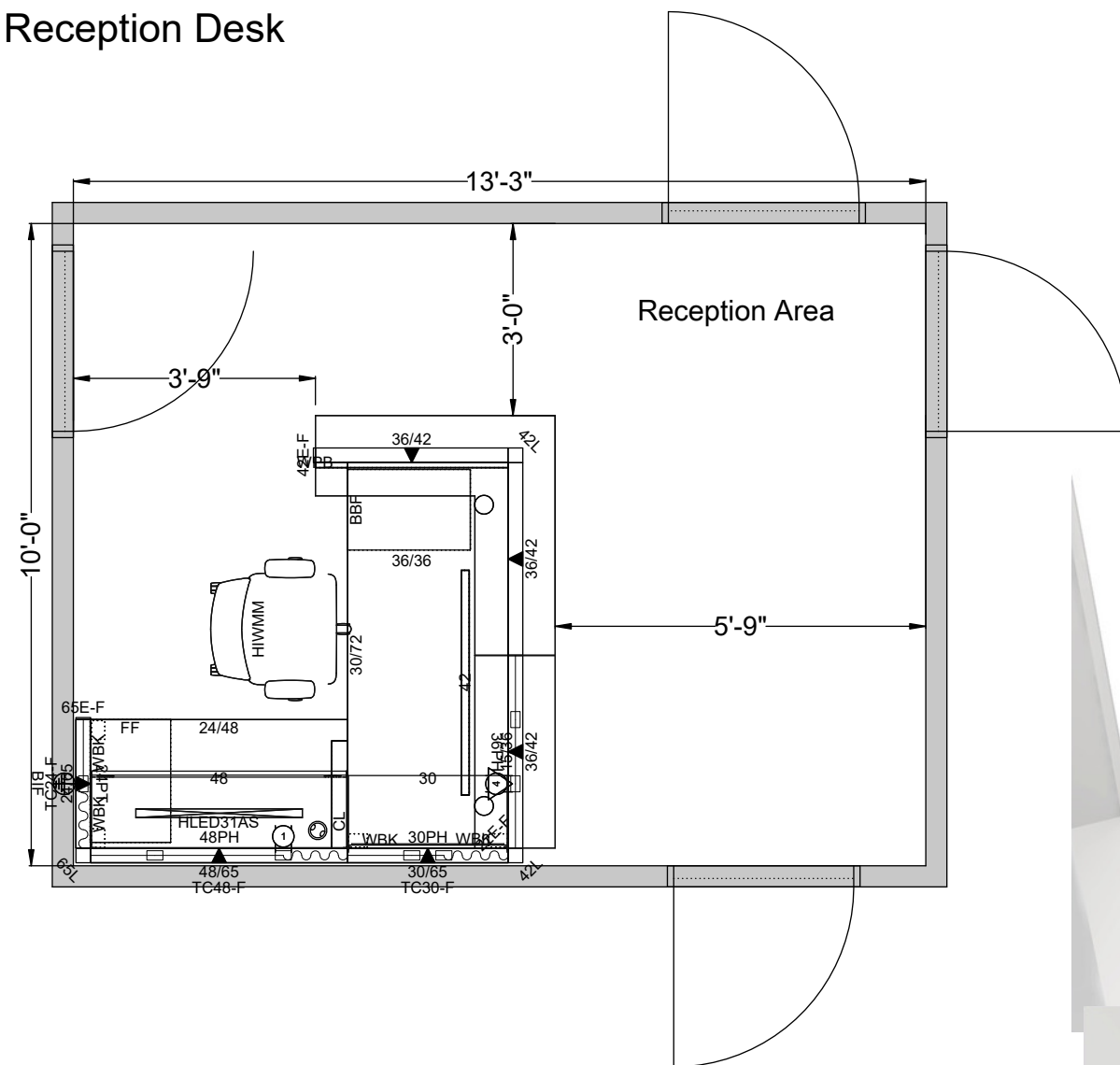
HONIntegratedDesign@honcompany.com

DATE:

3/20/2025

NOTE: The customer is ultimately responsible for the accuracy and correctness of component counts and measurements. The customer is also responsible for the space planning and all design work of projects. Customer shall verify and confirm all site conditions, dimensions, and suitability of products and applications consistent with published guidelines and applicable codes. Liability of The HON Company shall be limited to the amount charged for the Specification Services rendered and in no event shall The HON Company be responsible for any consequential or incidental damages.

Reception Desk



HON.

PROJECT INFO

REQ-00260185.cmdrw

SIERRA SCHOOL EQUIPMENT
COMPANY - BAKERSFIELD

Mt. Diablo

DESIGNER:

Kirana VH

EMAIL:

HONIntegratedDesign@honcompany.com

DATE:

3/20/2025

NOTE: The customer is ultimately responsible for the accuracy and correctness of component counts and measurements. The customer is also responsible for the space planning and all design work of projects. Customer shall verify and confirm all site conditions, dimensions, and suitability of products and applications consistent with published guidelines and applicable codes.

Liability of The HON Company shall be limited to the amount charged for the Specification Services rendered and in no event shall The HON Company be responsible for any consequential or incidental damages.

SCALE: NTS

7/7