



COOPERATIVE STRATEGIES

COMPLETE FINANCIAL & DEMOGRAPHIC PLANNING FOR EDUCATION

MT. DIABLO UNIFIED SCHOOL DISTRICT

TRUSTEE AREA SCENARIOS

OCTOBER 14, 2019



TRUSTEE AREA PROCESS

Date	Activity
May 13, 2019	Board Meeting: School District Initiates Process to Transition to By-District Elections
June 10, 2019	Board Meeting: First Pre-Map Public Hearing and Presentation
June 24, 2019	Board Meeting: Second Pre-Map Public Hearing Public Hearing on General Waiver Request Board Consideration of General Waiver Request
August 21, 22, 29, and September 11, 2019	Community input meetings at various sites across the School District to review preliminary scenarios and receive public input on maps
September 11, 2019	State Board of Education Approves General Waiver Request
September 23, 2019	Board Meeting: First Public Hearing on Trustee Area Scenarios
October 14, 2019	Board Meeting: Second Public Hearing on Trustee Area Scenarios
October 28, 2019	Board Meeting: Final Public Hearing on Trustee Area Scenarios Board Selection of Trustee Area Map Board Consideration of Change in Election Method
November 2019	County Committee on School District Organization Holds a Public Hearing and Considers Approval of Change in Election Method and Trustee Area Map
November 2019	Cooperative Strategies sends Final Trustee area Map to the County Registrar of Voters
November 2020	First Election Held Utilizing Trustee Areas



CONSIDERATIONS IN TRUSTEE AREAS



Each area shall contain nearly equal number of inhabitants



Follow man-made and natural geographic features, as much as possible



Drawn to comply with the Federal Voting Rights Act



Respect incumbency, if possible



Compact and contiguous, as much as possible



Other local considerations (i.e., school boundaries, locations of school sites)

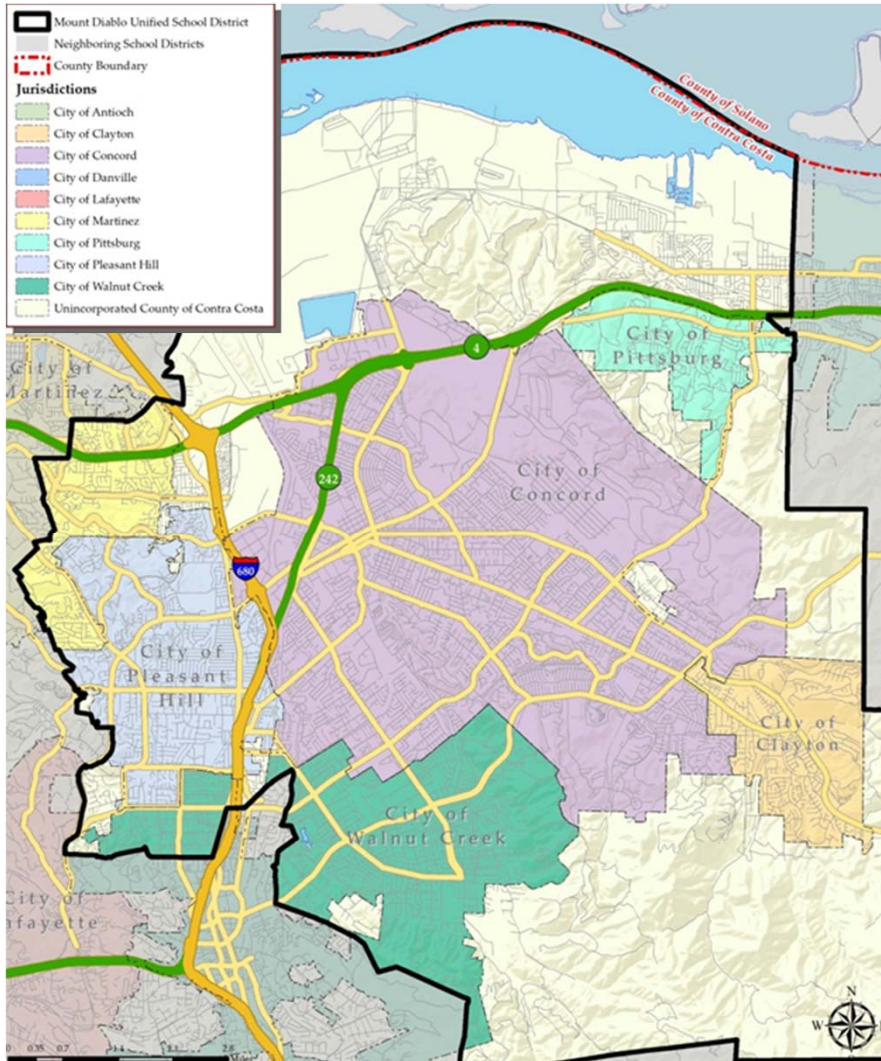


Respect communities of interest, as much as possible



DISTRICT DEMOGRAPHICS

2010 CENSUS DATA



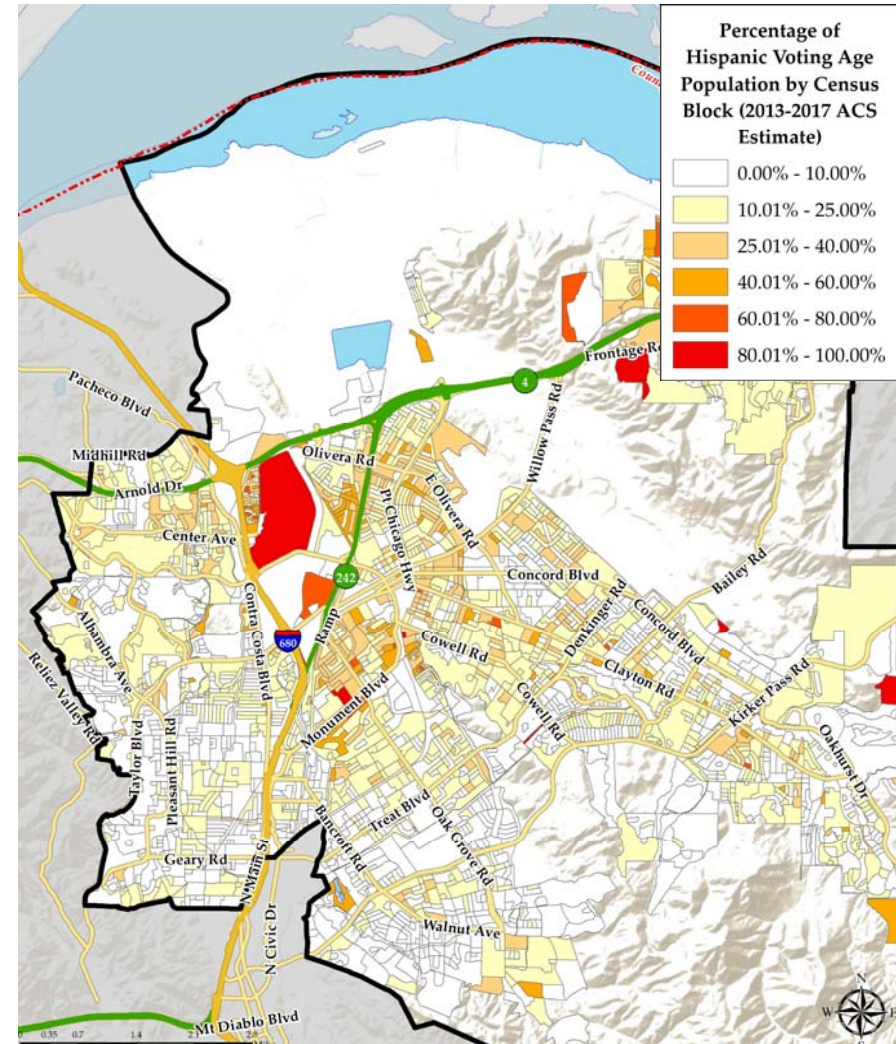
Population	Total Population		Age 18 and over	
	Total	%	Total	%
Hispanic/Latino	61,290	24.48%	40,720	21.03%
White	137,460	54.90%	114,004	58.86%
Black/ African American	9,017	3.60%	6,722	3.47%
American Indian/ Alaska Native	709	0.28%	584	0.30%
Asian	30,712	12.27%	25,169	13.00%
Native Hawaiian/ Pacific Islander	1114	0.44%	810	0.42%
Other	605	0.24%	405	0.21%
Two or More Races	9,464	3.78%	5,257	2.71%
Total Population	250,371	100.00%	193,671	100.00%



DISTRICT DEMOGRAPHICS

CITIZEN VOTING AGE POPULATION ESTIMATES

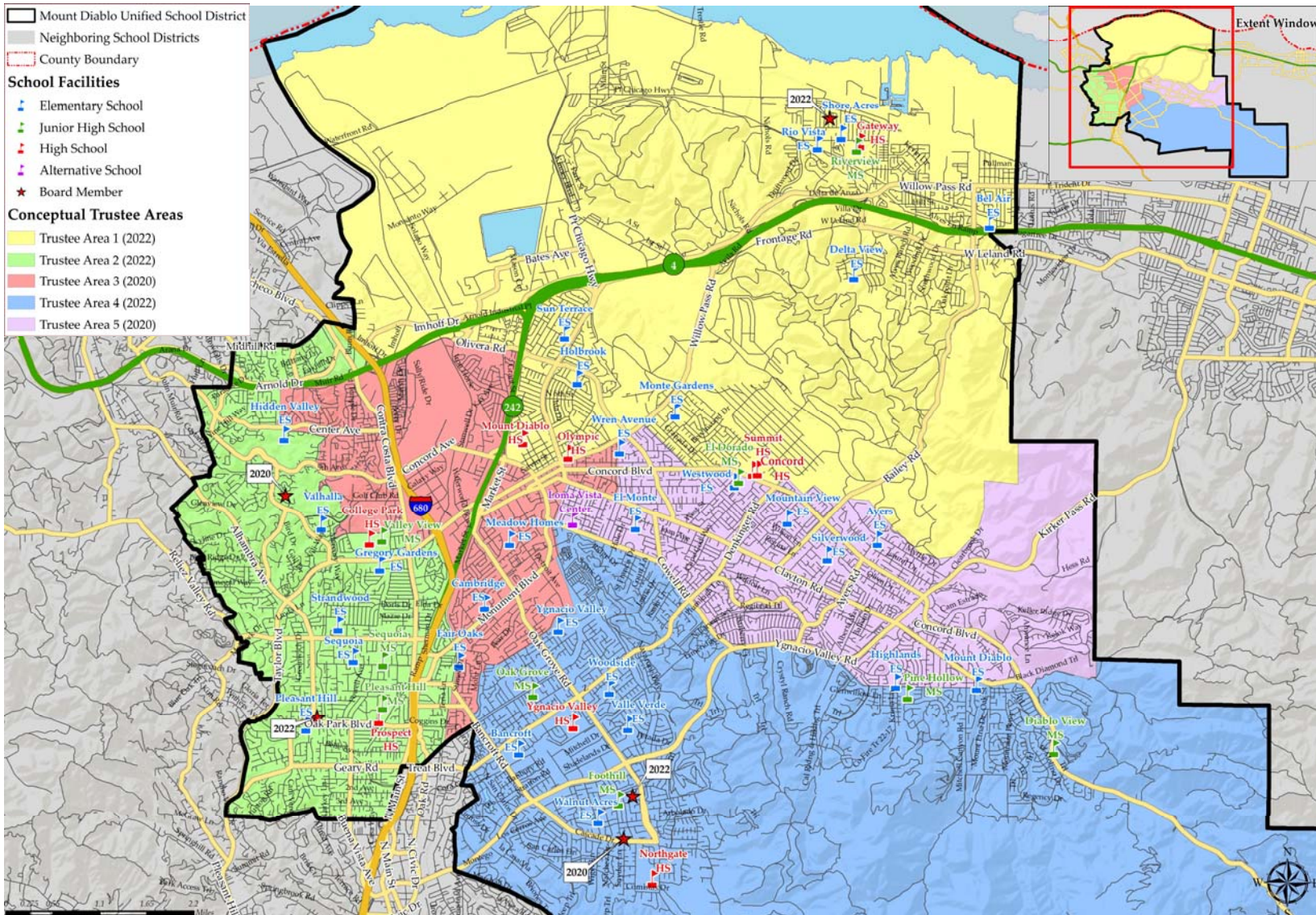
Population	2013-2017 CVAP	
	Total	%
Hispanic/Latino	29,769	16.38%
White	113,706	62.56%
Black/African American	8,260	4.54%
American Indian/ Alaska Native	464	0.26%
Asian	22,239	12.24%
Native Hawaiian/ Pacific Islander	726	0.40%
Two or More Races	6,596	3.63%
Total Population	181,760	100.00%





CONCEPTUAL TRUSTEE AREAS

SCENARIO PINK





DEMOGRAPHICS

SCENARIO PINK

TRUSTEE AREA	Trustee Area 1		Trustee Area 2		Trustee Area 3		Trustee Area 4		Trustee Area 5	
TP* vs. CVAP**	TP	CVAP	TP	CVAP	TP	CVAP	TP	CVAP	TP	CVAP
Population	49,992	35,728	51,525	40,698	48,364	27,738	50,650	40,179	49,840	37,417
Population Variance	-82	-624	1,451	4,346	-1,710	-8,614	576	3,827	-234	1,065
	-0.16%	-1.72%	2.90%	11.96%	-3.42%	-23.70%	1.15%	10.53%	-0.47%	2.93%
Hispanic/Latino	18,946	9,318	6,437	3,949	21,612	7,087	5,287	4,141	9,008	5,274
	37.90%	26.08%	12.49%	9.70%	44.69%	25.55%	10.44%	10.31%	18.07%	14.10%
White	17,832	15,620	35,983	29,734	16,755	13,728	35,371	28,862	31,519	25,762
	35.67%	43.72%	69.84%	73.06%	34.64%	49.49%	69.83%	71.83%	63.24%	68.85%
Black/African American	3,803	3,062	1,059	1,115	2,152	1,973	755	785	1,248	1,325
	7.61%	8.57%	2.06%	2.74%	4.45%	7.11%	1.49%	1.95%	2.50%	3.54%
American Indian/ Alaska Native	168	163	125	32	150	96	110	81	156	92
	0.34%	0.46%	0.24%	0.08%	0.31%	0.35%	0.22%	0.20%	0.31%	0.25%
Asian	6,944	6,031	5,650	3,837	5,691	3,623	6,893	5,054	5,534	3,694
	13.89%	16.88%	10.97%	9.43%	11.77%	13.06%	13.61%	12.58%	11.10%	9.87%
Native Hawaiian/Other Pacific Islander	375	235	87	236	339	55	158	51	155	149
	0.75%	0.66%	0.17%	0.58%	0.70%	0.20%	0.31%	0.13%	0.31%	0.40%
Other	119	0	114	0	98	0	131	0	143	0
	0.24%	0.00%	0.22%	0.00%	0.20%	0.00%	0.26%	0.00%	0.29%	0.00%
Two or More Races	1,805	1,299	2,070	1,795	1,567	1,176	1,945	1,205	2,077	1,121
	3.61%	3.64%	4.02%	4.41%	3.24%	4.24%	3.84%	3.00%	4.17%	3.00%

*TP: Total Population

**CVAP: Citizen Voting Age Population



ADDITIONAL DATA

SCENARIO PINK

ACS Age Groups (2017 Estimates) ^[1]					
	Trustee Area 1	Trustee Area 2	Trustee Area 3	Trustee Area 4	Trustee Area 5
Under 18 Years Old	24.29%	18.49%	23.08%	20.38%	21.70%
18-24 Years Old	10.01%	7.21%	9.00%	6.37%	6.97%
25-34 Years Old	14.66%	14.64%	18.58%	9.69%	14.75%
35-54 Years Old	27.91%	26.90%	28.43%	27.29%	26.31%
55-64 Years Old	12.67%	14.86%	11.16%	15.83%	13.81%
Over 64 Years Old	10.46%	17.90%	9.76%	20.43%	16.46%
Total	100.00%	100.00%	100.00%	100.00%	100.00%

ACS Renters vs Owners (2017 Estimates) ^[1]					
	Trustee Area 1	Trustee Area 2	Trustee Area 3	Trustee Area 4	Trustee Area 5
Total Owners	63.61%	61.69%	37.65%	80.47%	71.57%
Total Renters	36.39%	38.31%	62.35%	19.53%	28.43%
Total	100.00%	100.00%	100.00%	100.00%	100.00%

ACS Profile Income by Household (2017 Estimates) ^[1]					
	Trustee Area 1	Trustee Area 2	Trustee Area 3	Trustee Area 4	Trustee Area 5
Income \$0-25k	18.08%	12.08%	17.33%	7.12%	11.48%
Income \$25-50k	18.33%	13.54%	20.85%	10.93%	13.92%
Income \$50-100k	30.82%	24.21%	33.30%	23.61%	29.57%
Income \$100-150k	17.38%	22.08%	18.06%	17.98%	24.68%
Income \$150k+	15.38%	28.10%	10.45%	40.35%	20.36%
Total	100.00%	100.00%	100.00%	100.00%	100.00%

[1] Based off estimates prepared by the Census Bureau



ADDITIONAL DATA

SCENARIO PINK

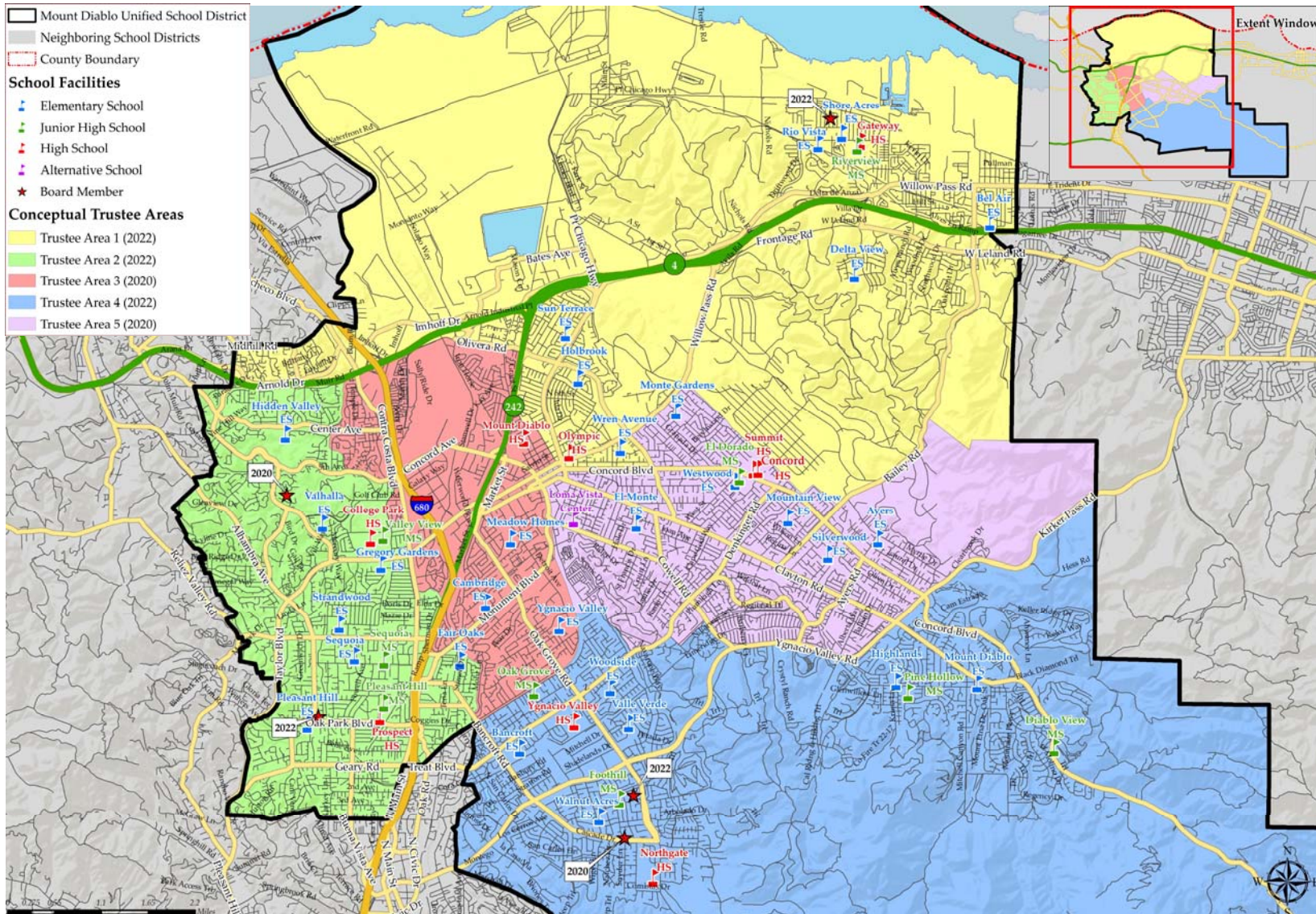
School Boundaries

	Trustee Area 1	Trustee Area 2	Trustee Area 3	Trustee Area 4	Trustee Area 5
School Boundaries	Ayers ES	Fair Oaks ES	Cambridge ES	Bancroft ES	Ayers ES
	Bel Air ES	Gregory Gardens ES	El Monte ES	El Monte ES	El Monte ES
	Delta View ES	Hidden Valley ES	Fair Oaks ES	Fair Oaks ES	Highlands ES
	Halbrook ES	Pleasant Hill ES	Gregory Gardens ES	Highlands ES	Mountain View ES
	Hidden Valley ES	Strandwood ES	Hidden Valley ES	Mt. Diablo ES	Mt. Diablo ES
	Monte Gardens ES	Valhalla ES	Holbrook ES	Valle Verde ES	Silverwood ES
	Mountain View ES	Pleasant Hill MS	Meadow Homes ES	Walnut Acres ES	Westwood ES
	Rio Vista ES	Valley View MS	Sun Terrace ES	Woodside ES	Wren Avenue ES
	Shores Acres ES	College Park HS	Valhalla ES	Ygnacio Valley ES	El Dorado MS
	Sun Terrace ES	Ygnacio Valley HS	Wren Avenue ES	El Dorado MS	Foothill MS
	Westwood ES		Ygnacio Valley ES	Foothill MS	Pine Hollow MS
	Wren Avenue ES		El Dorado MS	Oak Grove MS	Choice HS
	El Dorado MS		Oak Grove MS	Pine Hollow MS	Concord HS
	Pine Hollow MS		Pleasant Hill MS	Choice HS	Mt. Diablo HS
	Riverview MS		Valley View MS	Concord HS	Northgate HS
	Valley View MS		College Park HS	Northgate HS	Ygnacio Valley HS
	Choice HS		Mt. Diablo HS	Ygnacio Valley HS	
	College Park HS		Ygnacio Valley HS		
Concord HS					
Mt. Diablo HS					



CONCEPTUAL TRUSTEE AREAS

SCENARIO PURPLE





DEMOGRAPHICS

SCENARIO PURPLE

TRUSTEE AREA	Trustee Area 1		Trustee Area 2		Trustee Area 3		Trustee Area 4		Trustee Area 5	
TP* vs. CVAP**	TP	CVAP	TP	CVAP	TP	CVAP	TP	CVAP	TP	CVAP
Population	48,824	34,238	50,792	40,121	47,429	26,631	51,966	41,129	51,360	39,641
Population Variance	-1,250	-2,114	718	3,769	-2,645	-9,721	1,892	4,777	1,286	3,289
	-2.50%	-5.82%	1.43%	10.37%	-5.28%	-26.74%	3.78%	13.14%	2.57%	9.05%
Hispanic/Latino	18,530	8,962	6,012	3,955	21,733	6,796	4,855	3,812	10,160	6,244
	37.95%	26.18%	11.84%	9.86%	45.82%	25.52%	9.34%	9.27%	19.78%	15.75%
White	17,017	14,593	35,289	29,381	16,676	13,253	37,391	30,527	31,087	25,952
	34.85%	42.62%	69.48%	73.23%	35.16%	49.77%	71.95%	74.22%	60.53%	65.47%
Black/African American	3,877	3,208	1,026	1,098	2,028	1,755	754	557	1,332	1,642
	7.94%	9.37%	2.02%	2.74%	4.28%	6.59%	1.45%	1.35%	2.59%	4.14%
American Indian/ Alaska Native	176	153	119	70	135	58	120	95	159	88
	0.36%	0.45%	0.23%	0.17%	0.28%	0.22%	0.23%	0.23%	0.31%	0.22%
Asian	6,993	5,808	6,138	3,834	4,859	3,485	6,630	4,870	6,092	4,242
	14.32%	16.96%	12.08%	9.56%	10.24%	13.09%	12.76%	11.84%	11.86%	10.70%
Native Hawaiian/Other Pacific Islander	354	255	77	197	355	84	113	70	215	120
	0.73%	0.74%	0.15%	0.49%	0.75%	0.32%	0.22%	0.17%	0.42%	0.30%
Other	131	0	91	0	105	0	141	0	137	0
	0.27%	0.00%	0.18%	0.00%	0.22%	0.00%	0.27%	0.00%	0.27%	0.00%
Two or More Races	1,746	1,259	2,040	1,586	1,538	1,200	1,962	1,198	2,178	1,353
	3.58%	3.68%	4.02%	3.95%	3.24%	4.51%	3.78%	2.91%	4.24%	3.41%

*TP: Total Population

**CVAP: Citizen Voting Age Population



ADDITIONAL DATA

SCENARIO PURPLE

ACS Age Groups (2017 Estimates) ^[1]					
	Trustee Area 1	Trustee Area 2	Trustee Area 3	Trustee Area 4	Trustee Area 5
Under 18 Years Old	24.57%	18.69%	23.45%	21.58%	20.02%
18-24 Years Old	10.23%	7.55%	8.36%	6.10%	7.64%
25-34 Years Old	14.62%	14.19%	19.57%	9.79%	14.78%
35-54 Years Old	27.82%	27.62%	27.63%	27.16%	26.71%
55-64 Years Old	12.65%	14.79%	11.01%	15.22%	14.29%
Over 64 Years Old	10.11%	17.16%	9.98%	20.15%	16.56%
Total	100.00%	100.00%	100.00%	100.00%	100.00%

ACS Renters vs Owners (2017 Estimates) ^[1]					
	Trustee Area 1	Trustee Area 2	Trustee Area 3	Trustee Area 4	Trustee Area 5
Total Owners	60.76%	61.20%	38.91%	81.84%	68.76%
Total Renters	39.24%	38.80%	61.09%	18.16%	31.24%
Total	100.00%	100.00%	100.00%	100.00%	100.00%

ACS Profile Income by Household (2017 Estimates) ^[1]					
	Trustee Area 1	Trustee Area 2	Trustee Area 3	Trustee Area 4	Trustee Area 5
Income \$0-25k	17.90%	11.84%	19.21%	7.38%	11.07%
Income \$25-50k	19.68%	11.23%	24.02%	10.06%	14.89%
Income \$50-100k	30.72%	25.33%	31.68%	23.10%	31.06%
Income \$100-150k	16.13%	22.54%	16.30%	18.69%	25.08%
Income \$150k+	15.57%	29.06%	8.79%	40.77%	17.90%
Total	100.00%	100.00%	100.00%	100.00%	100.00%

[1] Based off estimates prepared by the Census Bureau



ADDITIONAL DATA

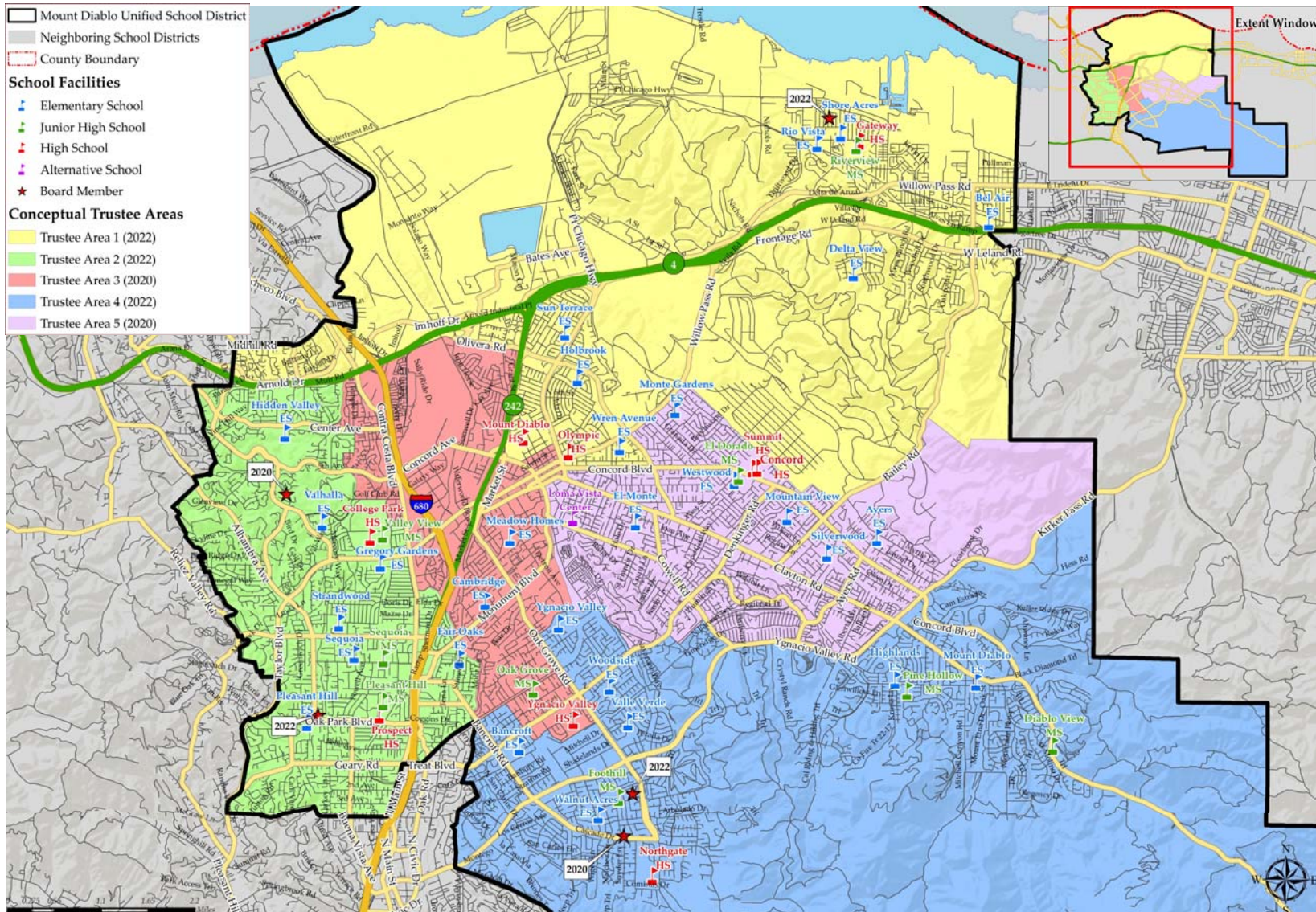
SCENARIO PURPLE

School Boundaries					
	Trustee Area 1	Trustee Area 2	Trustee Area 3	Trustee Area 4	Trustee Area 5
School Boundaries	Ayers ES	Fair Oaks ES	Cambridge ES	Ayers ES	Ayers ES
	Bel Air ES	Gregory Gardens ES	El Monte ES	Bancroft ES	El Monte ES
	Delta View ES	Hidden Valley ES	Fair Oaks ES	Highlands ES	Highlands ES
	Halbrook ES	Pleasant Hill ES	Gregory Gardens ES	Mt. Diablo ES	Monte Gardens ES
	Hidden Valley ES	Strandwood ES	Hidden Valley ES	Valle Verde ES	Mountain View ES
	Monte Gardens ES	Valhalla ES	Holbrook ES	Walnut Acres ES	Silverwood ES
	Mountain View ES	Pleasant Hill MS	Meadow Homes ES	Woodside ES	Westwood ES
	Rio Vista ES	Valley View MS	Sun Terrace ES	Foothill MS	Woodside ES
	Shores Acres ES	College Park HS	Wren Avenue ES	Oak Grove MS	Wren Avenue ES
	Sun Terrace ES	Ygnacio Valley HS	Ygnacio Valley ES	Pine Hollow MS	El Dorado MS
	West Wood ES		El Dorado MS	Choice HS	Foothill MS
	Wren Avenue ES		Oak Grove MS	Northgate HS	Oak Grove MS
	El Dorado MS		Pleasant Hill MS	Ygnacio Valley HS	Pine Hollow MS
	Pine Hollow MS		Valley View MS		Choice HS
	Riverview MS		College Park HS		Concord HS
	Valley View MS		Mt. Diablo HS		Mt. Diablo HS
	Choice HS		Ygnacio Valley HS		Northgate HS
	College Park HS				Ygnacio Valley ES
	Concord HS				
Mt. Diablo HS					



CONCEPTUAL TRUSTEE AREAS

SCENARIO PURPLE A





DEMOGRAPHICS

SCENARIO PURPLE A

TRUSTEE AREA	Trustee Area 1		Trustee Area 2		Trustee Area 3		Trustee Area 4		Trustee Area 5	
TP* vs. CVAP**	TP	CVAP	TP	CVAP	TP	CVAP	TP	CVAP	TP	CVAP
Population	49,554	34,692	50,362	40,318	48,254	27,193	50,845	39,918	51,356	39,639
Population Variance	-520	-1,660	288	3,966	-1,820	-9,159	771	3,566	1,282	3,287
	-1.04%	-4.57%	0.57%	10.91%	-3.64%	-25.20%	1.54%	9.81%	2.56%	9.04%
Hispanic/Latino	18,739	9,039	6,053	3,994	21,562	6,777	4,779	3,716	10,157	6,243
	37.82%	26.05%	12.02%	9.91%	44.68%	24.92%	9.40%	9.31%	19.78%	15.75%
White	17,367	14,960	35,529	29,608	16,939	13,569	36,539	29,618	31,086	25,951
	35.05%	43.12%	70.55%	73.44%	35.10%	49.90%	71.86%	74.20%	60.53%	65.47%
Black/African American	3,901	3,214	997	1,076	2,048	1,797	739	531	1,332	1,642
	7.87%	9.26%	1.98%	2.67%	4.24%	6.61%	1.45%	1.33%	2.59%	4.14%
American Indian/ Alaska Native	178	153	118	70	138	58	116	95	159	88
	0.36%	0.44%	0.23%	0.17%	0.29%	0.21%	0.23%	0.24%	0.31%	0.22%
Asian	7,078	5,815	5,452	3,770	5,589	3,695	6,501	4,717	6,092	4,242
	14.28%	16.76%	10.83%	9.35%	11.58%	13.59%	12.79%	11.82%	11.86%	10.70%
Native Hawaiian/Other Pacific Islander	365	255	80	194	353	87	101	70	215	120
	0.74%	0.74%	0.16%	0.48%	0.73%	0.32%	0.20%	0.18%	0.42%	0.30%
Other	133	0	91	0	108	0	136	0	137	0
	0.27%	0.00%	0.18%	0.00%	0.22%	0.00%	0.27%	0.00%	0.27%	0.00%
Two or More Races	1,793	1,256	2,042	1,606	1,517	1,210	1,934	1,171	2,178	1,353
	3.62%	3.62%	4.05%	3.98%	3.14%	4.45%	3.80%	2.93%	4.24%	3.41%

*TP: Total Population

**CVAP: Citizen Voting Age Population



ADDITIONAL DATA

SCENARIO PURPLE A

ACS Age Groups (2017 Estimates) ^[1]					
	Trustee Area 1	Trustee Area 2	Trustee Area 3	Trustee Area 4	Trustee Area 5
Under 18 Years Old	24.53%	19.16%	22.88%	21.49%	19.90%
18-24 Years Old	10.06%	6.58%	9.71%	6.13%	7.67%
25-34 Years Old	14.82%	14.21%	19.97%	9.81%	14.66%
35-54 Years Old	28.01%	28.09%	26.72%	27.31%	26.77%
55-64 Years Old	12.60%	14.74%	10.96%	15.13%	14.32%
Over 64 Years Old	9.98%	17.20%	9.76%	20.13%	16.68%
Total	100.00%	100.00%	100.00%	100.00%	100.00%

ACS Renters vs Owners (2017 Estimates) ^[1]					
	Trustee Area 1	Trustee Area 2	Trustee Area 3	Trustee Area 4	Trustee Area 5
Total Owners	61.13%	62.82%	36.51%	81.54%	68.67%
Total Renters	38.87%	37.18%	63.49%	18.46%	31.33%
Total	100.00%	100.00%	100.00%	100.00%	100.00%

ACS Profile Income by Household (2017 Estimates) ^[1]					
	Trustee Area 1	Trustee Area 2	Trustee Area 3	Trustee Area 4	Trustee Area 5
Income \$0-25k	18.09%	11.48%	19.21%	7.72%	11.19%
Income \$25-50k	19.25%	11.17%	24.06%	10.14%	14.60%
Income \$50-100k	31.16%	24.58%	32.14%	23.10%	31.19%
Income \$100-150k	16.30%	22.49%	16.05%	18.41%	24.99%
Income \$150k+	15.19%	30.28%	8.56%	40.63%	18.04%
Total	100.00%	100.00%	100.00%	100.00%	100.00%

[1] Based off estimates prepared by the Census Bureau



ADDITIONAL DATA

SCENARIO PURPLE A

School Boundaries					
	Trustee Area 1	Trustee Area 2	Trustee Area 3	Trustee Area 4	Trustee Area 5
School Boundaries	Ayers ES	Fair Oaks ES	Bancroft ES	Ayers ES	Ayers ES
	Bel Air ES	Gregory Gardens ES	Cambridge ES	Bancroft ES	El Monte ES
	Delta View ES	Hidden Valley ES	El Monte ES	Highlands ES	Highlands ES
	Halbrook ES	Pleasant Hill ES	Fair Oaks ES	Mt. Diablo ES	Monte Gardens ES
	Hidden Valley ES	Strandwood ES	Gregory Gardens ES	Valle Verde ES	Mountain View ES
	Monte Gardens ES	Valhalla ES	Hidden Valley ES	Walnut Acres ES	Silverwood ES
	Mountain View ES	Pleasant Hill MS	Holbrook ES	Woodside ES	Westwood ES
	Rio Vista ES	Valley View MS	Meadow Homes ES	Ygnacio Valley ES	Woodside ES
	Shores Acres ES	College Park HS	Sun Terrace ES	Foothill MS	Wren Avenue ES
	Sun Terrace ES	Ygnacio Valley HS	Woodside ES	Oak Grove MS	El Dorado MS
	West Wood ES		Wren Avenue ES	Pine Hollow MS	Foothill MS
	Wren Avenue ES		Ygnacio Valley ES	Choice HS	Oak Grove MS
	El Dorado MS		El Dorado MS	Northgate HS	Pine Hollow MS
	Pine Hollow MS		Oak Grove MS	Ygnacio Valley HS	Choice HS
	Riverview MS		Pleasant Hill MS		Concord HS
	Valley View MS		Valley View MS		Mt.Diablo HS
	Choice HS		College Park HS		Northgate HS
	College Park HS		Mt. Diablo HS		Ygnacio Valley HS
	Concord HS		Ygnacio Valley HS		
	Mt. Diablo HS				



SEQUENCING OPTIONS

ELECTION YEARS

Trustee Areas	Sequencing Option 1	Sequencing Option 2	Sequencing Option 3	Sequencing Option 4	Sequencing Option 5
Area 1	2022 (Mason resides At-Large)	2022 (Mason resides At-Large)	2022 (Mason resides At-Large)	2020 – Open – New Resident Trustee Representation + (Mason resides At-Large)	2020 – Open – New Resident Trustee Representation + (Mason resides At-Large)
Area 2	2022 (Mayo resides At-Large)	2022 (Mayo resides At-Large)	2020 – Open – New Resident Trustee Representation + (Mayo resides At-Large)	2022 (Mayo resides At-Large)	2020 – Open – New Resident Trustee Representation + (Mayo resides At-Large)
Area 3	2020 – Open – New Resident Trustee Representation	2020 – Open – New Resident Trustee Representation	2020 – Open – New Resident Trustee Representation	2020 – Open – New Resident Trustee Representation	2022 - No Resident Trustee Representation
Area 4	2022 (Khaund resides At-Large)	2020 – Open – New Resident Trustee Representation + (Khaund resides At-Large)	2022 (Khaund resides At-Large)	2022 (Khaund resides At-Large)	2022 (Khaund resides At-Large)
Area 5	2020 – Open – New Resident Trustee Representation	2022 – No Resident Trustee Representation	2022 – No Resident Trustee Representation	2022 – No Resident Trustee Representation	2022 – No Resident Trustee Representation



SEQUENCING OPTIONS

ELECTION YEARS

Trustee Areas	Sequencing Option 6	Sequencing Option 7	Sequencing Option 8	Sequencing Option 9	Sequencing Option 10
Area 1	2020 – Open – New Resident Trustee Representation + (Mason resides At-Large)	2020 – Open – New Resident Trustee Representation + (Mason resides At-Large)	2022 (Mason resides At-Large)	2022 (Mason resides At-Large)	2022 (Mason resides At-Large)
Area 2	2022 (Mayo resides At-Large)	2022 (Mayo resides At-Large)	2020 – Open –New Resident Trustee Representation + (Mayo resides At-Large)	2020 – Open –New Resident Trustee Representation + (Mayo resides At-Large)	2022 (Mayo resides At-Large)
Area 3	2022 - No Resident Trustee Representation	2022 - No Resident Trustee Representation	2022 - No Resident Trustee Representation	2022 - No Resident Trustee Representation	2022 - No Resident Trustee Representation
Area 4	2022 (Khaund resides At-Large)	2020 – Open –New Resident Trustee Representation + (Khaund resides At-Large)	2020 – Open –New Resident Trustee Representation + (Khaund resides At-Large)	2022 (Khaund resides At-Large)	2020 – Open –New Resident Trustee Representation + (Khaund resides At-Large)
Area 5	2020 – Open –New Resident Trustee Representation	2022 - No Resident Trustee Representation	2022 - No Resident Trustee Representation	2020 – Open New Resident Trustee Representation	2020 – Open New Resident Trustee Representation



QUESTIONS