

FOOD & NUTRITION SERVICES WAREHOUSE

Mt Diablo Unified School District
PHD ARCHITECTS, Inc. May 2018



MDUSD New Food & Nutrition Services Warehouse and Distribution Operations Final Plan

Dominic Machi, Director of Food & Nutrition Services
July 27, 2020



Food & Nutrition Services Department Meals Served And Procurement Data

- **Participates in the School Breakfast, School Lunch, After School Snack, Supper, and Summer Seamless Food Program.**
- **Food & Nutrition Services serves close to 4 Million Meals Annually.**
- **Food Procurement Annual Expenditure is \$2.8 million to \$3.0 million.**
- **Food & Nutrition Services purchase examples; #33,450 Individual Carrot Packages; #26,000 Salad Greens; #58,000 Bananas; #95,000 Apples; 62,000 Packages of Bread Items; 4000 Cases of Pizza; 4,100 Cases of Chicken Products; 3,800 Cases of Beef Products; and 3000 Cases of Cheese annually.**

NEW FOOD & NUTRITION SERVICES WAREHOUSE AND DISTRIBUTION OPERATION SYSTEM



NEW ROLE AND RESPONSIBILITY OF WAREHOUSE AND DISTRIBUTION OPERATIONS

- **Centralized Warehouse and Distribution Model to support 47 School Site Kitchens.**
- **Increased Level of Inventory Control for Purchased Products allowing Food & Nutrition Services to Manage all Purchases from One Central Location.**
- **Inter-District Procurement System between School Sites and Food & Nutrition Services Warehouse.**
- **Inter-District Distribution System Responsible for providing Higher Level of Customer Service and Product Quality Control.**
- **New Food & Nutrition Services Warehouse will now be able to Store and Distribute over \$700,000 USDA Commodity Products and Department of Defense Produce.**

NEW ROLE AND RESPONSIBILITY OF WAREHOUSE AND DISTRIBUTION OPERATIONS (CONTINUED)

- **Warehouse and Distribution Team will be Distributing 150-500 cases of Product per day depending on Route Schedule.**
- **Warehouse will become the Largest Centralized Cold and Dry Food Storage Facility for a Local Education Agency in Contra Costa County.**
- **Capability to become an Emergency Response Center for Central Contra Costa County if needed during a Natural Disaster or Pandemic.**

NEW FOOD & NUTRITION SERVICES INTER-DISTRICT PROCUREMENT AND INVENTORY SYSTEM BENEFITS

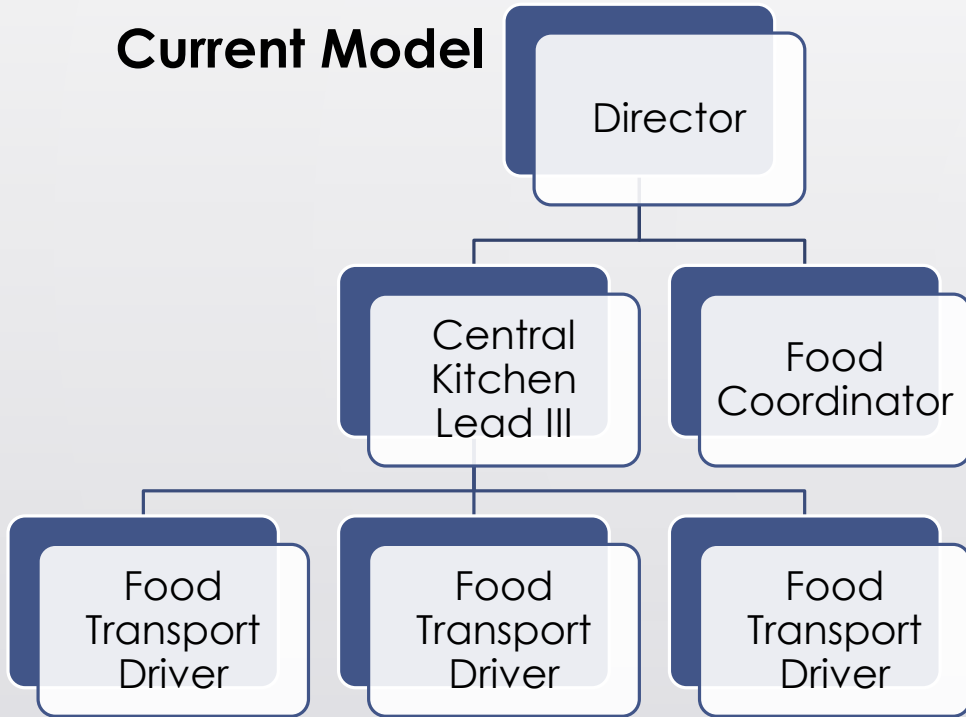
- **Titan School Solutions “Back of the House” Software to be used by Warehouse, Loma Vista Central Kitchen, and 47 School Sites for Procurement and Perpetual Inventory System.**
- **Food & Nutrition Services staff will use Titan School Solutions as One Technology Platform.**
- **Titan School Solutions Software Features: Point of Sale, Meal Applications, Data Reporting, Vendor Procurement, Receiving, Inventory Control, Warehouse Bin Management, Customer Order Fulfillment, Shipping, and Distribution Routing.**
- **Increased Inventory Control and creating a “Just in Time” Perpetual Inventory System reducing Cost of Goods Expenditure.**

ORGANIZATION STRUCTURE FOR FOOD & NUTRITION SERVICES WAREHOUSE AND DISTRIBUTION OPERATIONS

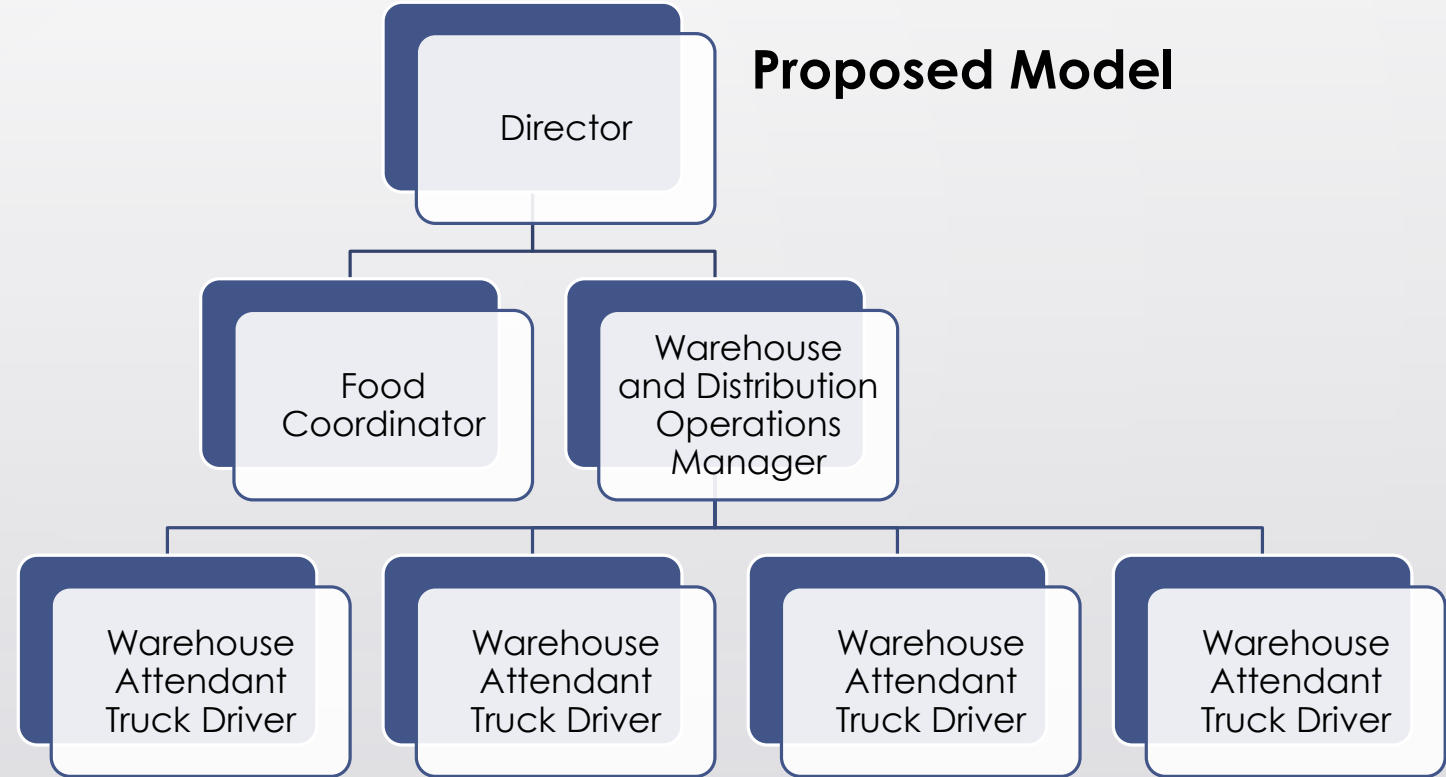


Food & Nutrition Services Warehouse and Distribution Operations Organization Chart

Current Model



Proposed Model



NEW FOOD & NUTRITION SERVICES WAREHOUSE AND DISTRIBUTION OPERATIONS NET ANNUAL SAVINGS AND BENEFITS

- **Multi-Distributor and Manufacturers deliver direct to one location delivery point at MDUSD New Food & Nutrition Services Warehouse results in a 20% reduction in food cost. $\$2,825,000 \times 20\% = \$565,000$ / $\$2,825,000 - \$565,000$ Food Cost Savings = $\$2,260,000$ New Food Cost**
- **Total Projected Cost for New Food & Nutrition Services Warehouse Infrastructure = $\$2,644,000$**
- **Projected New Food Cost $\$2,260,000$ – Warehouse Infrastructure Cost $\$2,644,000$ = $\$281,500$ Total Net Savings Annually to Cafeteria Fund.**
- **Net Savings allows for Higher Quality Food to be Purchased and Served to Students.**
- **Net Savings supports Future Reinvestment of Cafeteria Funds into the Food & Nutrition Services Department .**

PRESENT COST VS. NEW INFRASTRUCTURE COST

Current:

Food purchases - \$2,825,000

Delivery costs - \$12,500

Food Transport Drivers - \$88,000

Total Cost - \$2,925,500

Proposed:

Food purchases - \$2,260,000

Delivery costs - \$25,000

Warehouse & Distribution Operations Manager - \$100,000

Warehouse Attendant Truck Driver - \$65,000

(Proposed) Reclassification Food Transport Driver to Warehouse Attendant Drivers - \$141,000

Titan Back of House License Fee - \$28,000

Upgrade Director role - \$25,000

Total Cost - \$2,644,000

Net Savings \$281,500

New Food & Nutrition Services Warehouse and Distribution Operations Contribution to Academic Achievement



////////////////////////////////////

New Food & Nutrition Services Warehouse Coming Soon!!! Projected Grand opening January 2021





Thank you and Questions?