



# ▶ 2020 CENSUS AND REDISTRICTING

MT. DIABLO UNIFIED SCHOOL DISTRICT

FEBRUARY 9, 2022



**COOPERATIVE**  
**STRATEGIES**  
ASSESS • PLAN • FUND • BUILD

► DRAFT TIMELINE

DATE	ACTIVITY
<b>February 9, 2022</b>	<b>Board Meeting: Presentation on Evaluation of Existing Voting Areas Receive Initial Scenarios</b>
February 10 – 21, 2022	Cooperative Strategies prepares potential maps of adjusted Voting Areas
<b>February 23, 2022</b>	<b>Board Meeting: Review Revised and/or Additional Scenarios Adopt Final Trustee Areas</b>
March/April 2022	Cooperative Strategies sends Final Trustee Areas Map to the County Registrars of Voters.

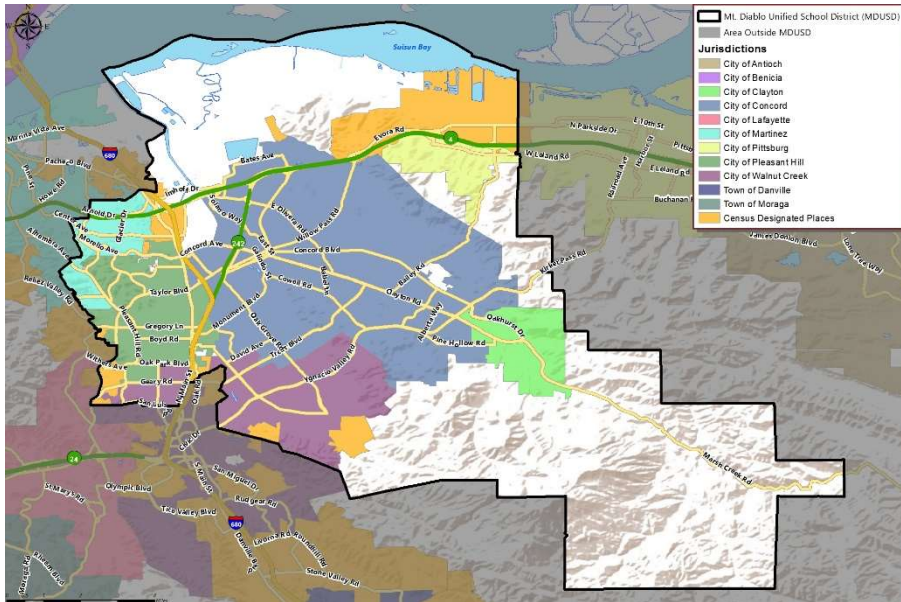
► DISTRICT DEMOGRAPHICS  
**2020 CENSUS DATA**



- Validated redistricting data was finalized by the California Department of Finance on September 27, 2021.
- This data showed substantial changes in the area served by Mt. Diablo Unified School District (“MDUSD”) from 2010 to 2020, including:
  - **Overall population growth of over 16,401 (6.5%)**
  - **Total Variance of 16.4% based on 2020 Census (*Out of Compliance*)**

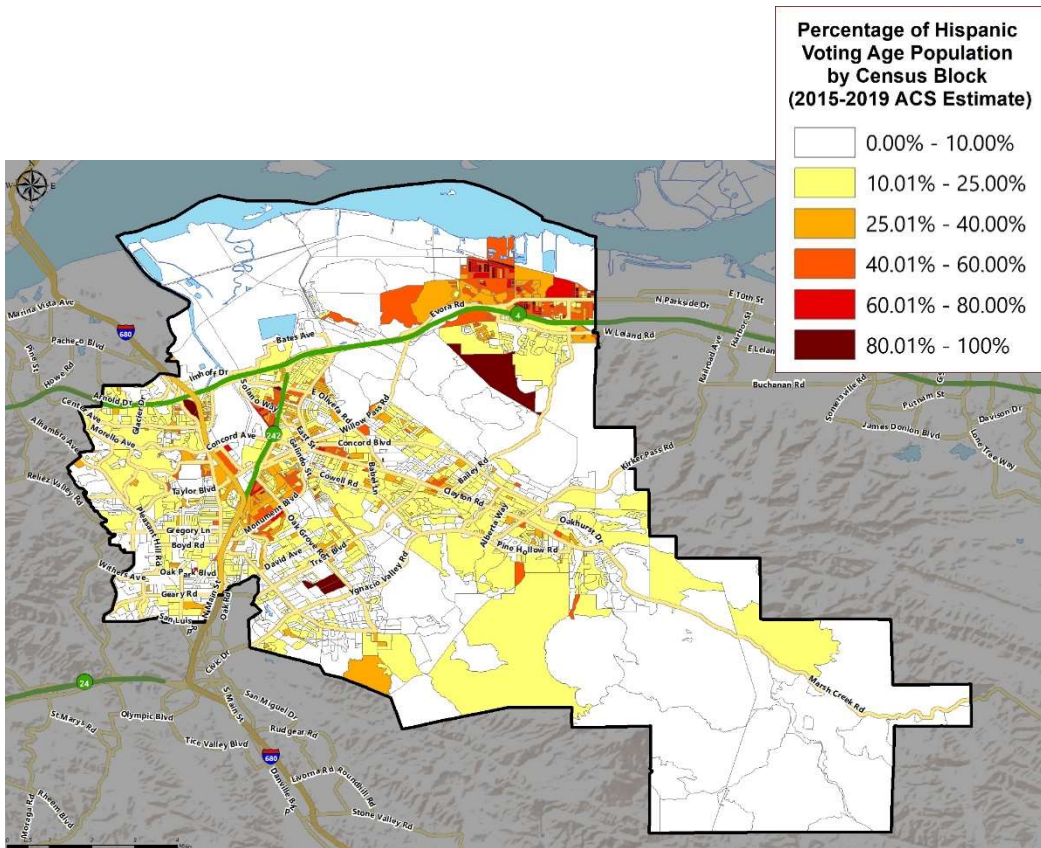
Trustee Area	2010 Census		2020 Census		Change	
	Total	Variance	Total	Variance	Population	Percent
Trustee Area 1	49,548	-1.1%	58,412	9.4%	8,864	17.9%
Trustee Area 2	50,498	0.8%	52,848	-1.0%	2,350	4.7%
Trustee Area 3	48,247	-3.7%	49,648	-7.0%	1,401	2.9%
Trustee Area 4	50,852	1.5%	52,130	-2.3%	1,278	2.5%
Trustee Area 5	51,356	2.5%	53,864	0.9%	2,508	4.9%
<b>Total Population</b>	<b>250,501</b>	<b>6.2%</b>	<b>266,902</b>	<b>16.4%</b>	<b>16,401</b>	<b>6.5%</b>

► DISTRICT DEMOGRAPHICS  
2020 CENSUS DATA



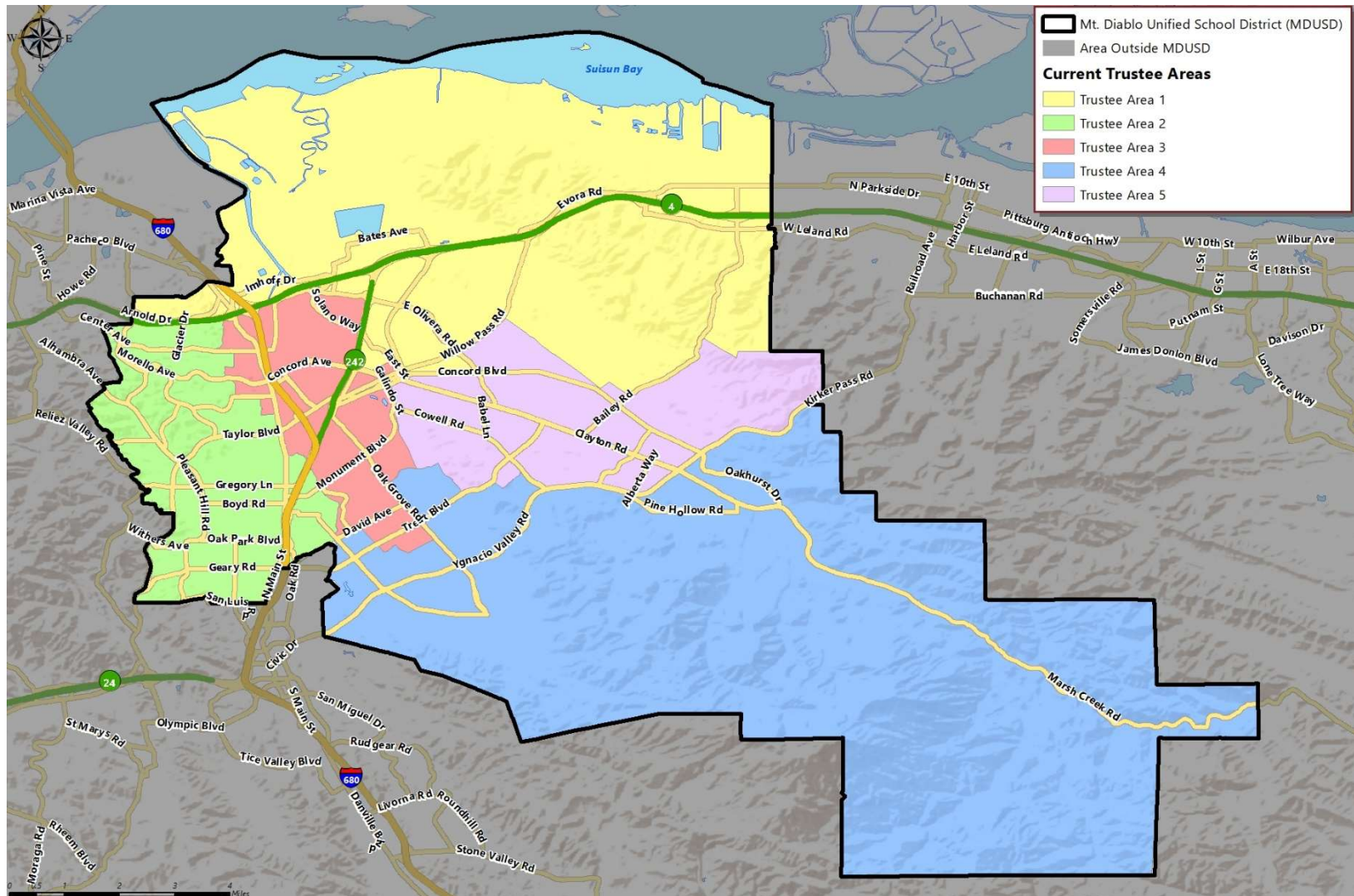
Population	Total Population		Age 18 and over	
	Total	%	Total	%
Hispanic/Latino	70,283	26.3%	49,874	23.6%
White	123,432	46.2%	104,581	49.5%
Black / African American	10,771	4.0%	8,616	4.1%
American Indian /Alaska Native	591	0.2%	495	0.2%
Asian	42,693	16.0%	35,326	16.7%
Native Hawaiian/ Pacific Islander	1,190	0.4%	949	0.4%
Other	1,804	0.7%	1,281	0.6%
Two or More Races	16,138	6.0%	10,090	4.8%
<b>Total</b>	<b>266,902</b>	<b>100%</b>	<b>211,212</b>	<b>100%</b>

► DISTRICT DEMOGRAPHICS  
**CITIZEN VOTING AGE POPULATION ESTIMATES**



Population	2015-2019 CVAP	
	Total	%
Hispanic/Latino	32,010	17.5%
White	110,717	60.5%
Black / African American	7,907	4.3%
American Indian / Alaska Native	288	0.2%
Asian	24,527	13.4%
Native Hawaiian/ Pacific Islander	608	0.3%
Two or More Races	6,878	3.8%
<b>Total</b>	<b>182,935</b>	<b>100%</b>

▶ CURRENT TRUSTEE AREAS



► CURRENT TRUSTEE AREAS

Census 2020 Total Population:	266,902	Ideal Trustee Area Size:	53,380	Total Variance:	16.4%
----------------------------------	---------	-----------------------------	--------	-----------------	-------

TRUSTEE AREA	Trustee Area 1		Trustee Area 2		Trustee Area 3		Trustee Area 4		Trustee Area 5	
TP* vs. CVAP**	TP	CVAP	TP	CVAP	TP	CVAP	TP	CVAP	TP	CVAP
Population	58,412	<b>34,176</b>	52,848	<b>39,545</b>	49,648	<b>28,446</b>	52,130	<b>40,724</b>	53,864	<b>40,044</b>
Population Variance	9.4%	<b>N/A</b>	-1.0%	<b>N/A</b>	-7.0%	<b>N/A</b>	-2.3%	<b>N/A</b>	0.9%	<b>N/A</b>
Hispanic/Latino	40.2%	<b>27.5%</b>	14.1%	<b>11.4%</b>	42.8%	<b>26.0%</b>	11.6%	<b>10.1%</b>	22.4%	<b>16.4%</b>
White	25.6%	<b>40.0%</b>	61.8%	<b>71.7%</b>	31.1%	<b>48.1%</b>	63.4%	<b>71.6%</b>	50.7%	<b>64.5%</b>
Black/African American	7.9%	<b>8.9%</b>	2.3%	<b>2.5%</b>	4.4%	<b>5.8%</b>	1.8%	<b>2.1%</b>	3.4%	<b>3.4%</b>
American Indian/Alaska Native	0.3%	<b>0.3%</b>	0.2%	<b>0.0%</b>	0.2%	<b>0.1%</b>	0.2%	<b>0.1%</b>	0.3%	<b>0.2%</b>
Asian	19.7%	<b>18.9%</b>	13.9%	<b>9.9%</b>	15.2%	<b>15.4%</b>	15.2%	<b>12.4%</b>	15.6%	<b>11.8%</b>
Native Hawaiian/Other Pacific Islander	0.8%	<b>0.5%</b>	0.2%	<b>0.4%</b>	0.6%	<b>0.5%</b>	0.3%	<b>0.4%</b>	0.3%	<b>0.0%</b>
Other	0.6%	<b>N/A</b>	0.7%	<b>N/A</b>	0.8%	<b>N/A</b>	0.7%	<b>N/A</b>	0.7%	<b>N/A</b>
Two or More Races	4.9%	<b>3.9%</b>	6.8%	<b>4.1%</b>	5.0%	<b>4.1%</b>	6.9%	<b>3.3%</b>	6.7%	<b>3.6%</b>

\*Total Population; Source: Redistricting Database for California, Published by Statewide Database on September 20, 2021

\*\*Citizen Voting Age Population (CVAP); Source: American Community Survey, 2015-2019 Data

## ▶ CONSIDERATIONS IN VOTING AREA ADJUSTMENTS



Each area shall contain nearly equal number of inhabitants



Follow man-made and natural geographic features, as much as possible



Drawn to comply with the Federal Voting Rights Act



Respect incumbency, if possible



Compact and contiguous, as much as possible



Other local considerations



Respect communities of interest, as much as possible

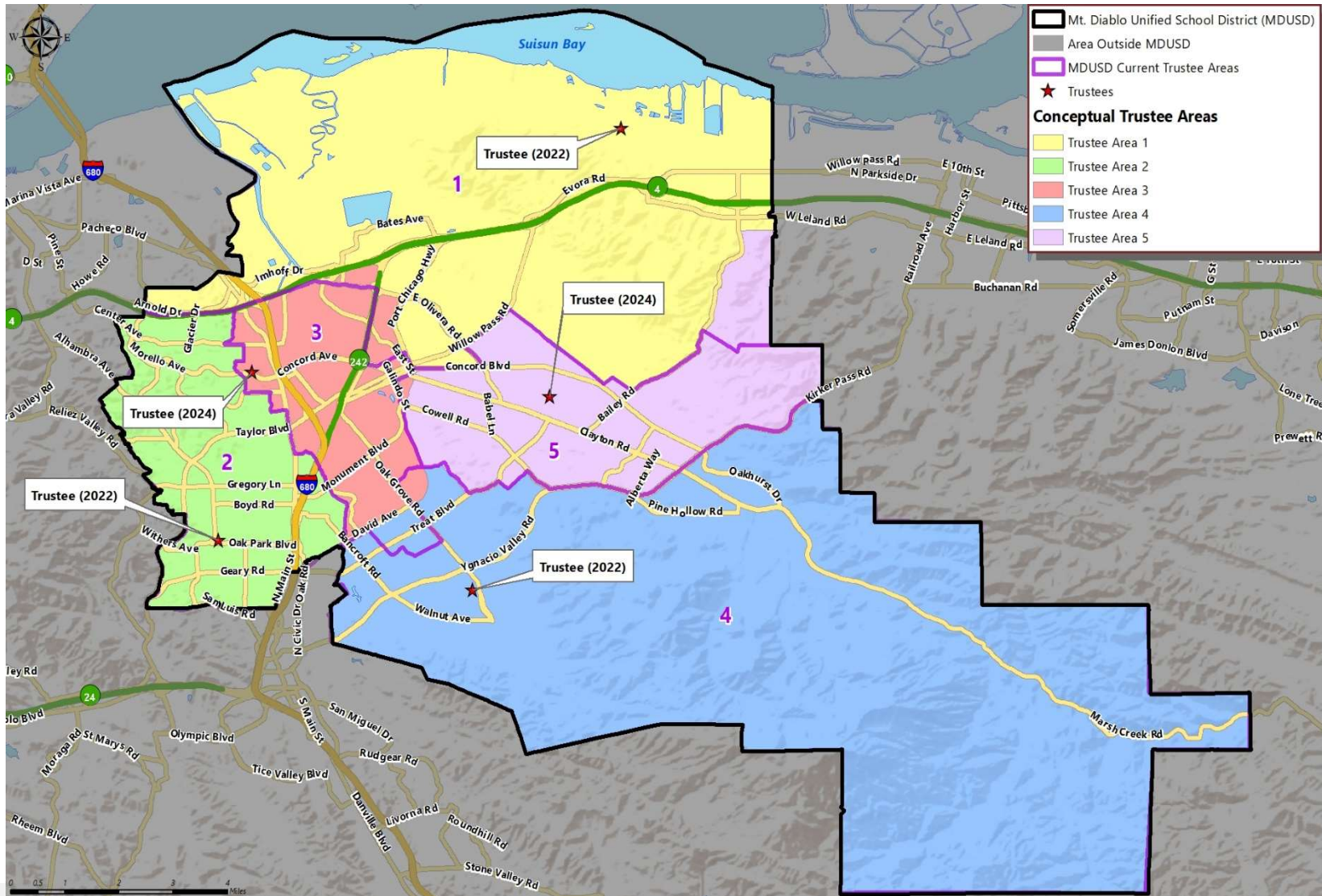


▶ **CONCEPTUAL TRUSTEE AREAS**  
**SCENARIO CONSIDERATIONS**

For both Scenarios:

- The first consideration taken into account was balancing the trustee areas so that the total population is closer to the ideal size which is 53,380 people. This in turn would make the variance fall under the 10% limit.
- The second consideration was to stay as close to the current trustee areas as possible, whenever possible. The majority of the population growth was in area 1, so the changes were mostly to Trustee Area 5 and 3.
- The third consideration is for each trustee to be kept in their own trustee area (respect incumbency).

# ▶ CONCEPTUAL TRUSTEE AREAS SCENARIO 1



► **DEMOGRAPHICS**  
**SCENARIO 1**

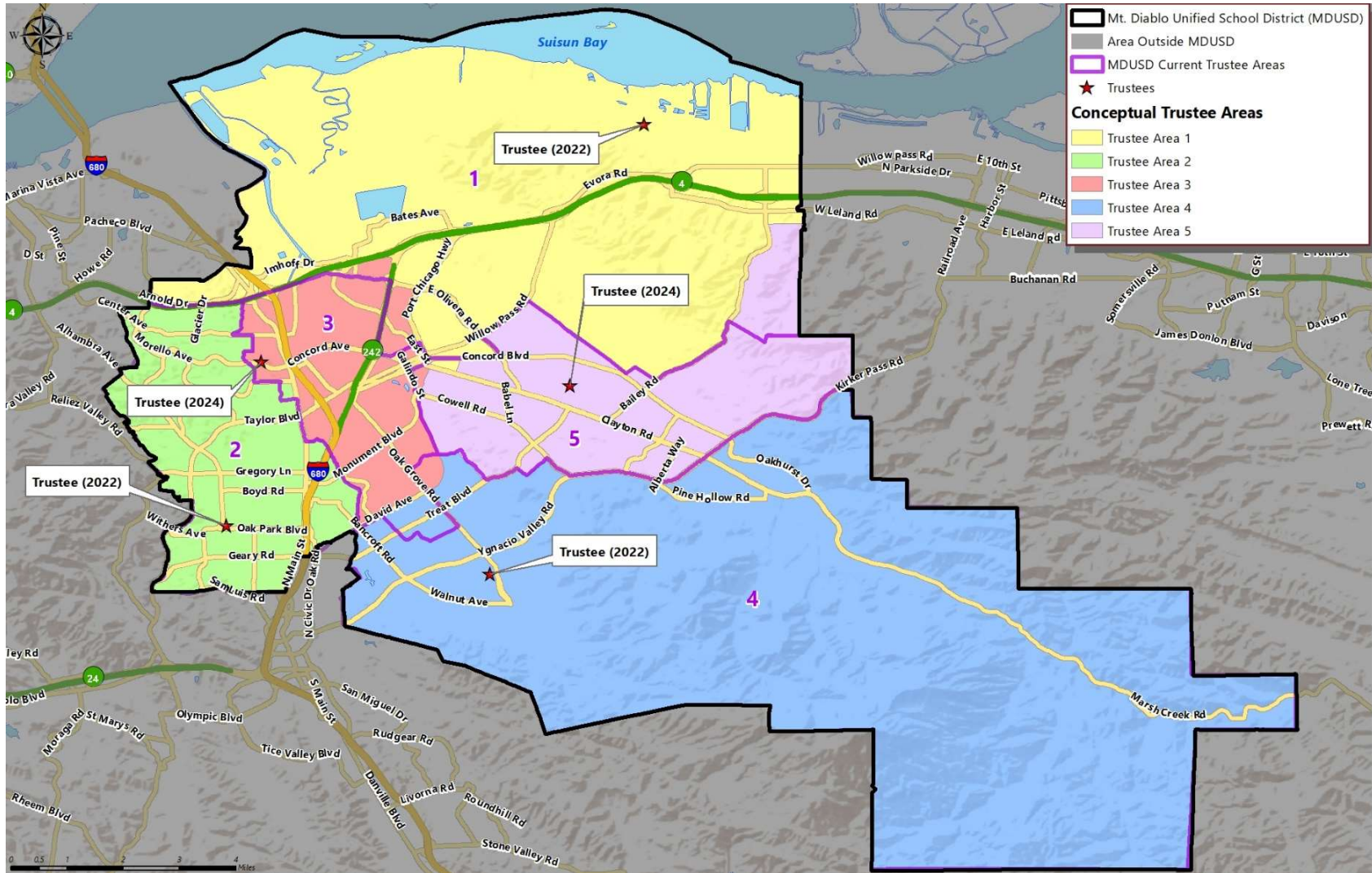
<b>Total Population:</b>	<b>266,902</b>	<b>Ideal Trustee Area Size:</b>	<b>53,380</b>	<b>Variance:</b>	<b>2.0%</b>
--------------------------	----------------	---------------------------------	---------------	------------------	-------------

<b>TRUSTEE AREA</b>	<b>Trustee Area 1</b>		<b>Trustee Area 2</b>		<b>Trustee Area 3</b>		<b>Trustee Area 4</b>		<b>Trustee Area 5</b>	
<b>TP* vs. CVAP**</b>	<b>TP</b>	<b>CVAP</b>	<b>TP</b>	<b>CVAP</b>	<b>TP</b>	<b>CVAP</b>	<b>TP</b>	<b>CVAP</b>	<b>TP</b>	<b>CVAP</b>
Population	53,183	<b>31,327</b>	52,848	<b>39,545</b>	53,731	<b>30,012</b>	53,221	<b>41,964</b>	53,919	<b>40,087</b>
Population Variance	-0.4%	<b>N/A</b>	-1.0%	<b>N/A</b>	0.7%	<b>N/A</b>	-0.3%	<b>N/A</b>	1.0%	<b>N/A</b>
Hispanic/Latino	40.7%	<b>27.9%</b>	14.1%	<b>11.4%</b>	42.7%	<b>26.5%</b>	11.6%	<b>10.0%</b>	22.4%	<b>16.4%</b>
White	24.3%	<b>38.0%</b>	61.8%	<b>71.7%</b>	31.2%	<b>48.5%</b>	63.4%	<b>71.5%</b>	50.7%	<b>64.5%</b>
Black/African American	8.1%	<b>9.2%</b>	2.3%	<b>2.5%</b>	4.6%	<b>5.7%</b>	1.8%	<b>2.3%</b>	3.4%	<b>3.4%</b>
American Indian/Alaska Native	0.3%	<b>0.3%</b>	0.2%	<b>0.0%</b>	0.2%	<b>0.2%</b>	0.1%	<b>0.1%</b>	0.3%	<b>0.2%</b>
Asian	20.3%	<b>19.8%</b>	13.9%	<b>9.9%</b>	14.9%	<b>14.9%</b>	15.3%	<b>12.4%</b>	15.5%	<b>11.8%</b>
Native Hawaiian/Other Pacific Islander	0.8%	<b>0.6%</b>	0.2%	<b>0.4%</b>	0.6%	<b>0.4%</b>	0.2%	<b>0.4%</b>	0.3%	<b>0.0%</b>
Other	0.6%	<b>N/A</b>	0.7%	<b>N/A</b>	0.8%	<b>N/A</b>	0.6%	<b>N/A</b>	0.7%	<b>N/A</b>
Two or More Races	4.8%	<b>4.1%</b>	6.8%	<b>4.1%</b>	5.0%	<b>3.8%</b>	6.9%	<b>3.3%</b>	6.7%	<b>3.6%</b>

\*Total Population; Source: Redistricting Database for California, Published by Statewide Database on September 20, 2021

\*\*Citizen Voting Age Population (CVAP); Source: American Community Survey, 2015-2019 Data

# ▶ CONCEPTUAL TRUSTEE AREAS SCENARIO 2



► **DEMOGRAPHICS**  
**SCENARIO 2**

<b>Total Population:</b>	<b>266,902</b>	<b>Ideal Trustee Area Size:</b>	<b>53,380</b>	<b>Variance:</b>	<b>1.3%</b>
--------------------------	----------------	---------------------------------	---------------	------------------	-------------

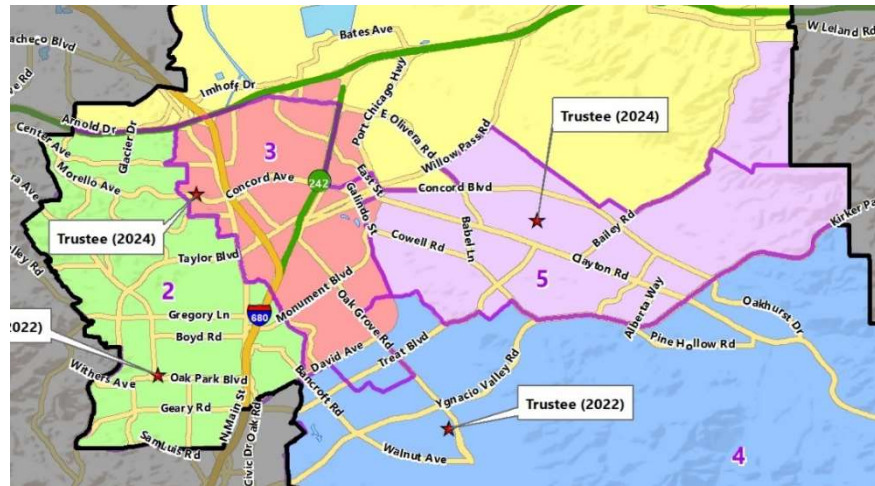
<b>TRUSTEE AREA</b>	<b>Trustee Area 1</b>		<b>Trustee Area 2</b>		<b>Trustee Area 3</b>		<b>Trustee Area 4</b>		<b>Trustee Area 5</b>	
<b>TP* vs. CVAP**</b>	<b>TP</b>	<b>CVAP</b>	<b>TP</b>	<b>CVAP</b>	<b>TP</b>	<b>CVAP</b>	<b>TP</b>	<b>CVAP</b>	<b>TP</b>	<b>CVAP</b>
Population	53,894	<b>31,977</b>	53,345	<b>39,848</b>	53,234	<b>29,709</b>	53,221	<b>41,964</b>	53,208	<b>39,437</b>
Population Variance	1.0%	<b>N/A</b>	-0.1%	<b>N/A</b>	-0.3%	<b>N/A</b>	-0.3%	<b>N/A</b>	-0.3%	<b>N/A</b>
Hispanic/Latino	40.5%	<b>28.3%</b>	14.1%	<b>11.7%</b>	42.9%	<b>26.3%</b>	11.6%	<b>10.0%</b>	22.4%	<b>15.9%</b>
White	24.4%	<b>37.8%</b>	61.7%	<b>71.5%</b>	31.0%	<b>48.5%</b>	63.4%	<b>71.5%</b>	50.9%	<b>65.2%</b>
Black/African American	8.1%	<b>9.2%</b>	2.3%	<b>2.5%</b>	4.6%	<b>5.7%</b>	1.8%	<b>2.3%</b>	3.4%	<b>3.3%</b>
American Indian/Alaska Native	0.3%	<b>0.3%</b>	0.2%	<b>0.0%</b>	0.2%	<b>0.2%</b>	0.1%	<b>0.1%</b>	0.3%	<b>0.2%</b>
Asian	20.4%	<b>19.7%</b>	14.0%	<b>9.8%</b>	14.9%	<b>15.0%</b>	15.3%	<b>12.4%</b>	15.4%	<b>11.7%</b>
Native Hawaiian/Other Pacific Islander	0.8%	<b>0.6%</b>	0.2%	<b>0.4%</b>	0.6%	<b>0.4%</b>	0.2%	<b>0.4%</b>	0.3%	<b>0.0%</b>
Other	0.6%	<b>N/A</b>	0.7%	<b>N/A</b>	0.8%	<b>N/A</b>	0.6%	<b>N/A</b>	0.7%	<b>N/A</b>
Two or More Races	4.9%	<b>4.0%</b>	6.8%	<b>4.1%</b>	4.9%	<b>3.9%</b>	6.9%	<b>3.3%</b>	6.7%	<b>3.7%</b>

\*Total Population; Source: Redistricting Database for California, Published by Statewide Database on September 20, 2021

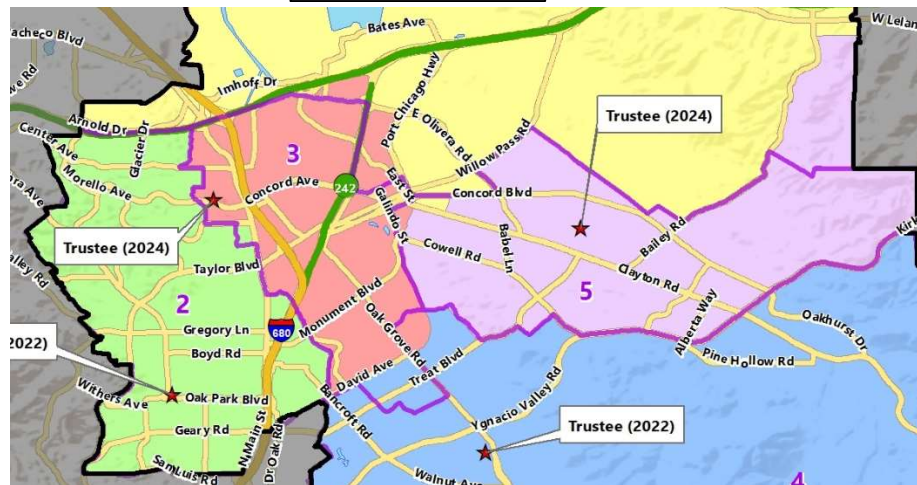
\*\*Citizen Voting Age Population (CVAP); Source: American Community Survey, 2015-2019 Data

# ▶ CONCEPTUAL TRUSTEE AREAS - COMPARISON

## Scenario 1



## Scenario 2



A row of yellow school buses is parked in a grassy field under a cloudy sky. A large, semi-transparent, stylized letter 'S' is overlaid on the image, with the word 'QUESTIONS' written in white capital letters across its center.

# QUESTIONS